

CERTIFICATE OF LOCATION OF GOVERNMENT CORNER

County of Anoka

State of Minnesota

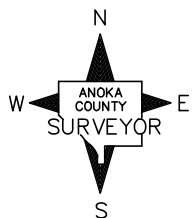
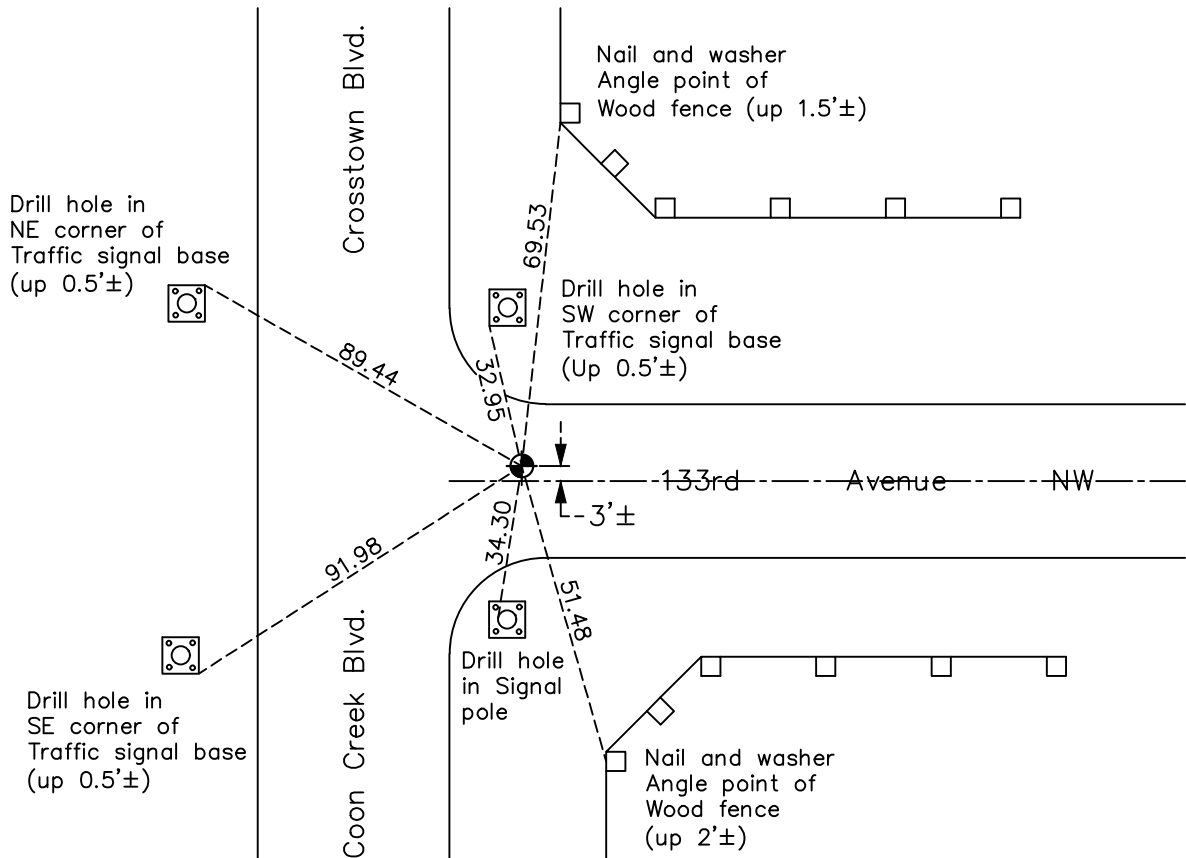
Northeast Corner of Sec. 4 Township 31 Range 24

On the 12th day of November, 1987, the described corner was evidenced by a previously found
iron pipe and area resurvey

and to perpetuate the location of said corner, at the exact location thereof, a permanent marker
was placed consisting of a cast iron monument

AND on the 11th day of July, 2022, said permanent marker was found flush and on the
West edge of crosswalk stop stripe. The ties were updated

Updated reference ties are as shown below.



N.A.D. 1983 Coordinates
(1996 Adjustment)

| County Project Coordinates | |
|----------------------------|--------------------|
| Northing | <u>164591.4236</u> |
| Easting | <u>484457.5856</u> |
| Date | <u>7/19/00</u> |

I hereby certify that this United States public land survey monument record is correct and complete to the best of my knowledge and belief.

David Zieglmeier Date 2/8/23

David Zieglmeier Anoka County Surveyor
Minnesota License Number 46179

Revision Date

10/25/22

HISTORY OF GOVERNMENT CORNER

Page No. 6A

County of Anoka

State of Minnesota

Northeast Corner of Sec. 4 Township 31 Range 24

CORNER HISTORY:

June 1957 - Cartwright and Olson found iron pipe up 0.3' under fence line. All trees were found with old blazes. Established ties to monument.

August 1, 1960 - Found iron pipe up 0.6' with steel fence post and updated ties.

November 12, 1987 - Set cast iron monument flush with surface after road construction using area plats and resurvey. Set P.K.Nails 2.00' North and East of monument. Updated ties.

July 21, 1993 - Found cast iron monument and updated ties

July 19, 2000 - Found cast iron monument and established NAD 1983 (1996 Adjustment) Anoka County Project Coordinates by Static GPS methods. Updated ties.

February 8, 2010 - Found cast iron monument and updated ties

May 17, 2012 - Set construction ties, updated ties, verified location using VRS and removed cast iron monument prior to road construction.

July 2012 - Set cast iron monument flush with surface after road construction using construction ties. Verified location of corner by Static GPS methods.

April 13, 2015 - Found cast iron monument flush and on the West edge of crosswalk stop stripe. Verified position by VRS GPS methods. Updated ties.

January 17, 2020 - Found cast iron monument flush and on the West edge of crosswalk stop stripe. Verified position by VRS GPS methods. Updated ties.

July 11, 2022 - Found cast iron monument flush and on the West edge of crosswalk stop stripe. Verified position by VRS GPS methods. Updated ties.