

CERTIFICATE OF LOCATION OF GOVERNMENT CORNER

County of Anoka

State of Minnesota

Meander Corner of Sec. 4 Township 31 Range 24

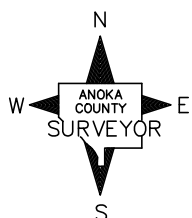
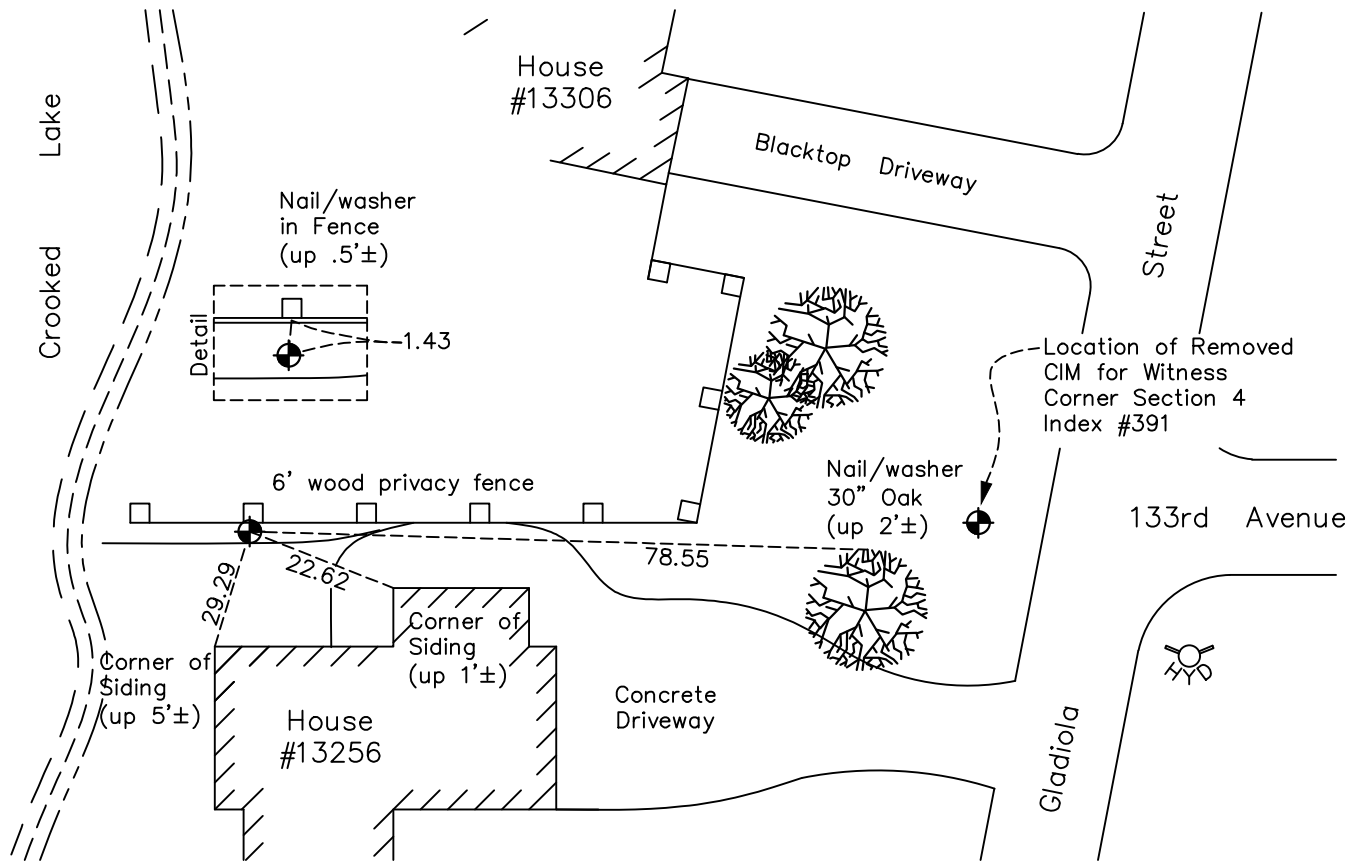
(On north line of section)

On the 25th day of June, 1980, the described corner was evidenced by a concrete monument

and to perpetuate the location of said corner, at the exact location thereof, a permanent marker was placed consisting of a new Witness Corner was established consisting of a CIM on May 3, 1992
as concrete Meander corner was obliterated as unknown date

AND on the 24th day of August, 2023, said permanent marker was set to reestablish the historical Meander Corner, consisting of a CIM down 0.1'± and tie were established

Updated reference ties are as shown below.



Revision Date
8/24/2023

N.A.D. 1983 Coordinates
 (1996 Adjustment)

| County Project Coordinates | |
|----------------------------|------------|
| Northing | 164569.840 |
| Easting | 480767.187 |
| Date | 8/24/2023 |

I hereby certify that this United States public land survey monument record is correct and complete to the best of my knowledge and belief.
David Zieglmeier Date 12/11/23
 David Zieglmeier Anoka County Surveyor
 Minnesota License Number 46179

HISTORY OF GOVERNMENT CORNER

Page No. 8

County of Anoka

State of Minnesota

Witness Corner of Sec. 4 Township 31 Range 24
(On north line of section)

CORNER HISTORY:

May 5, 1947 - H.A. Cartwright found M.C.#2, concrete monument, flush with the surface. Established ties to monument.

July 18, 1947 Plat of SUNNYLAND M.C. #2 shown 1060 feet west of North Quarter Section 4.

September 7, 1960 -M.C # 2 Found concrete monument flush with the surface and set 1/2" iron pipe on the north side. Updated ties.

June 8, 1964 - M.C # 2 Found concrete monument and updated ties.

January 5, 1965 Plat of LUNDGREEN OAKRIDGE ADDITION M.C. #2 (AKA M.C. #7 Sec. 33) shown 1059.59 feet west of North Quarter Section 4.

July 28, 1966 - M.C # 2 Found concrete monument and updated ties.

July 22, 1970 - M.C # 2 Found concrete monument and updated ties.

July 1, 1974 - M.C # 2 Found concrete monument and updated ties.

June 14, 1977 - M.C # 2 Found concrete monument and updated ties.

June 25, 1980 - M.C. #2 Found concrete monument and updated ties.

May 3, 1992 - Set cast iron monument, as new **Witness Corner**, new location is 948.57 feet west of North Quarter Sec. 4, 111 feet east of M.C. that has been obliterated. New monument down 0.5'± using area resurvey and established ties to monument.

August 17, 1994 - W.C. Found cast iron monument and updated ties.

July 19, 2000 - W.C. Found cast iron monument down 0.5'± and established NAD 1983 (1996 Adjustment) Anoka County Project Coordinates by Static GPS methods. Updated ties.

March 17, 2010 - W.C. Found cast iron monument down 0.5' and updated ties.

April 6, 2015 - W.C. Found cast iron monument down 0.5'±. Verified position by VRS GPS methods. Updated ties.

January 23, 2020 - W.C. Found cast iron monument down 0.5'±. Verified position by VRS GPS methods. Updated ties.

July 15, 2022 -W.C. Found cast iron monument down 0.5'±. Verified position by VRS GPS methods. Updated ties. Monument location determined to be 0.15' south of North Line Section 4.

August 24, 2023 - Removed found CIM **Witness Corner** (index #391) located 948.57 feet west of North Quarter Sec. 4. (Coordinates Northing 164571.124; Easting 480878.2036 N.A.D. 1983 1996 Adj) Set solid CIM down 0.1'± using RTK GPS method to re-established **Meander Corner** on North line of Section 4. Position is approximately 111' West of removed Witness Corner. Established ties for monument.