

CERTIFICATE OF LOCATION OF GOVERNMENT CORNER

County of Anoka

State of Minnesota

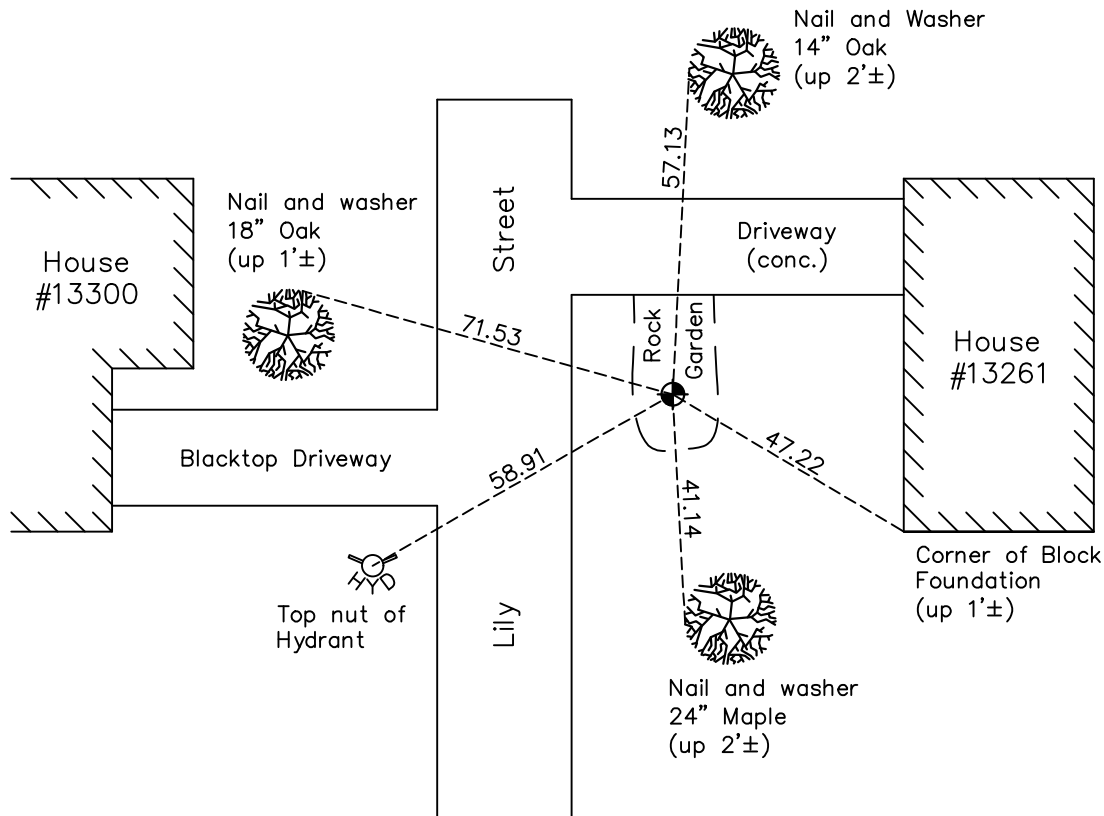
Northwest Corner of Sec. 4 Township 31 Range 24

On the 1st day of July, 1974, the described corner was evidenced by a concrete monument

and to perpetuate the location of said corner, at the exact location thereof, a permanent marker was placed consisting of a cast iron monument

AND on the 5th day of January, 2023, said permanent marker was found down 0.3" in covered ICV tube

Updated reference ties are as shown below.



Revision Date
10/25/22

N.A.D. 1983 Coordinates
(1996 Adjustment)

County Project Coordinates	
Northing	<u>164549.6231</u>
Easting	<u>479206.9266</u>
Date	<u>11/16/00</u>

I hereby certify that this United States public land survey monument record is correct and complete to the best of my knowledge and belief.

David Zieglmeier Date 2/28/23

David Zieglmeier Anoka County Surveyor
Minnesota License Number 46179

HISTORY OF GOVERNMENT CORNER

Page No. 9

County of Anoka

State of Minnesota

Northwest Corner of Sec. 4 Township 31 Range 24

CORNER HISTORY:

July 31, 1944 - H.A. Cartwright found concrete monument down 3". Established ties to monument.

August 2, 1960 - Found concrete monument with an iron pipe on the north side and updated ties.

June 8, 1964 - Found concrete monument down 0.3' with an iron pipe on the north side and updated ties.

July 14, 1966 - Found concrete monument with an iron pipe on the north side and updated ties.

July 22, 1970 - Found concrete monument down 0.2'± with an iron pipe on the north side and updated ties.

July 1, 1974 - Replaced concrete monument down 0.2'± and iron pipe on north side with a cast iron monument set up 1'± and set sign and post 1'± north of monument. Updated ties.

June 8, 1977 - Raised cast iron monument to a position flush with surface and updated ties. Sign and post on the north side of monument.

June 25, 1980 - Found cast iron monument updated ties.

July 19, 1983 - Found cast iron monument updated ties.

November 9, 1983 - Found cast iron monument and updated ties.

June 18, 1986 - Found cast iron monument and updated ties.

August 16, 1990 - Found cast iron monument in flower garden and updated ties.

August 8, 1994 - Found cast iron monument in flower garden and updated ties.

November 16, 2000 - Found cast iron monument 1'± west of Cedar tree base and established NAD 1983 (1996 Adjustment) Anoka County Project Coordinates by Static GPS methods. Updated ties.

March 23, 2010 - Found cast iron monument in flower garden and updated ties.

April 6, 2015 - Found cast iron monument down 0.5'± in rock garden and updated ties.

July 15, 2019 - Found cast iron monument laying over. Reset cast iron monument flush w/dirt in rock garden. Updated ties.

January 23, 2020 - Found cast iron monument flush in rock garden. Verified position by VRS GPS methods. Updated ties.

July 15, 2022 - Found cast iron monument down 0.3" in covered ICV tube in rock garden. Verified position by VRS GPS methods. Updated ties.

January 5, 2023 - Found cast iron monument down 0.3"± and verified position by County RTK GPS method. Ties and coordinates were reviewed and determined as accurate.