

CERTIFICATE OF LOCATION OF GOVERNMENT CORNER

County of Anoka

State of Minnesota

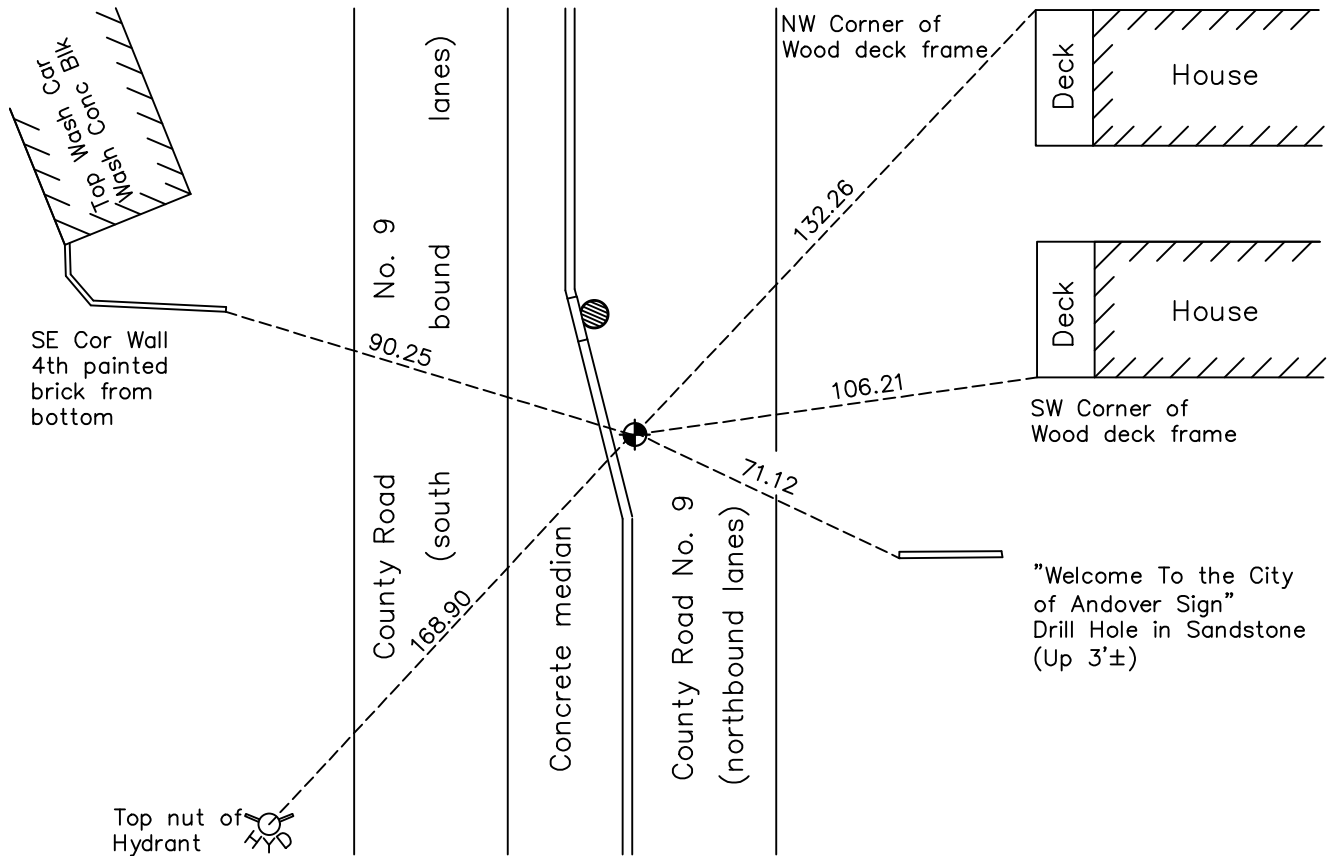
North $\frac{1}{4}$ Corner of Sec. 5 Township 31 Range 24

On the 23rd day of July, 1970, the described corner was evidenced by an iron pipe

and to perpetuate the location of said corner, at the exact location thereof, a permanent marker was placed consisting of a cast iron monument

AND on the 22nd day of July, 2022, said permanent marker was found flush to
surface on fog line, and ties were updated

Updated reference ties are as shown below.



Revision Date
10/25/22

N.A.D. 1983 Coordinates
 (1996 Adjustment)

County Project Coordinates	
Northing	<u>164553.6994</u>
Easting	<u>476580.5924</u>
Date	<u>11/16/00</u>

I hereby certify that this United States public land survey monument record is correct and complete to the best of my knowledge and belief.

David Zieglmeier Date 2/8/23

David Zieglmeier Anoka County Surveyor
 Minnesota License Number 46179

HISTORY OF GOVERNMENT CORNER

Page No. 10

County of Anoka

State of Minnesota

North 1/4 Corner of Sec. 5 Township 31 Range 24

CORNER HISTORY:

August 9, 1955 - C.E. Coulter found granite monument down 1.0' in centerline of Round Lake Blvd. Set iron pipe flush with surface and established ties to monument.

November 1959 - N.C. Hoium found granite monument down 1.5' and updated ties.

August 2, 1960 - Found iron pipe down 0.3' over granite monument and updated ties.

September 14, 1964 - Found iron pipe and updated ties.

July 14, 1966 - Found iron pipe and updated ties.

July 23, 1970 - Replaced iron pipe, down 0.2', over granite monument, down 1'±, with a shortened cast iron monument set flush with surface on top of granite monument and updated ties. Set P.K. nails 2.00' North and East.

July 5, 1974 - Found cast iron monument and updated ties.

June 16, 1977 - Found cast iron monument and updated ties. Set P.K.nails North and East.

September 21, 1979 - Found cast iron monument and updated ties. Monument is 3.5'± east of centerline.

June 25, 1980 - Found cast iron monument and updated ties.

June 16, 1986 - Found cast iron monument and updated ties.

April 17, 1990 - Set construction ties and prior to road construction.

May 18, 1994 - Set cast iron monument flush with surface on top of granite monument after road construction using construction ties. Monument is next to concrete curb. Updated ties.

August 8, 1994 - Found cast iron monument and updated ties.

November 16, 2000 - Found cast iron monument and established NAD 1983 (1996 Adjustment) Anoka County Project Coordinates by Static GPS methods. Updated ties.

March 25, 2010 - Found cast iron monument and updated ties.

April 13, 2015 - Found cast iron monument on fog line at middle of left turn taper and updated ties.

September 08, 2020 - Reset cast iron monument, set flush to surface, after construction using static GPS methods, verified with VRS GPS and updated ties

July 22, 2022 - Found cast iron monument flush. Verified position by VRS GPS methods. Updated ties.