

# CERTIFICATE OF LOCATION OF GOVERNMENT CORNER

County of Anoka

State of Minnesota

## Witness Corner of Sec. 6 Township 31 Range 24

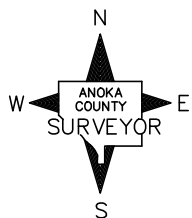
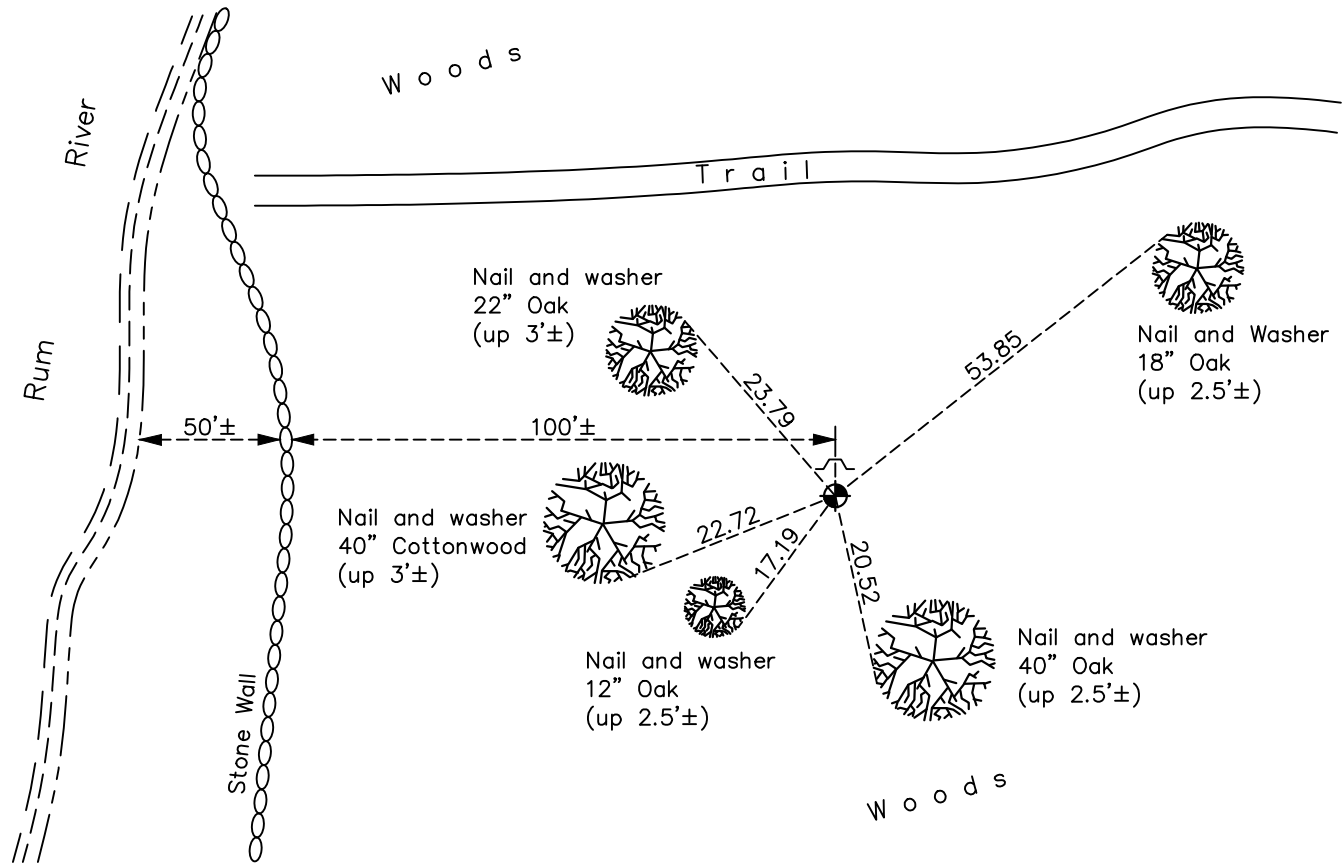
(On north line of NW1/4)

On the 23rd day of July, 1965, the described corner was evidenced by a concrete monument last noted as found August 12, 1960

and to perpetuate the location of said corner, at the exact location thereof, a permanent marker was placed consisting of a cast iron monument

AND on the 15th day of July, 2022, said permanent marker was found down 0.5'± with a sign and post 1'± to the north and the ties were updated

Updated reference ties are as shown below.



Revision Date  
 10/25/22

N.A.D. 1983 Coordinates  
 (1996 Adjustment)

County Project Coordinates	
Northing	164600.8972
Easting	468719.4633
Date	11/21/00

I hereby certify that this United States public land survey monument record is correct and complete to the best of my knowledge and belief.

*David Zieglmeier* Date 2/28/23

David Zieglmeier Anoka County Surveyor  
 Minnesota License Number 46179

# HISTORY OF GOVERNMENT CORNER

Page No. 13

County of Anoka

State of Minnesota

Witness Corner of Sec. 6 Township 31 Range 24  
(On north line of NW1/4)

## **CORNER HISTORY:**

November 7, 1945 - Cartwright found granite monument lying on its side in river bed. True location of corner was determined and ties to corner location were established.

September 28, 1959 - N.C. Hoium found concrete monument and updated ties.

August 12, 1960 - Found concrete monument up 0.8' and updated ties.

July 23, 1965 - Found concrete monument missing. Reset position of corner with cast iron monument set flush with surface using ties. Updated ties.

July 27, 1966 - Found cast iron monument and updated ties.

August 6, 1970 - Found cast iron monument and updated ties.

July 1, 1974 - Found cast iron monument and updated ties.

June 15, 1977 - Found cast iron monument and updated ties.

May 1, 1979 - Found cast iron monument and updated ties.

July 10, 1980 - Found cast iron monument and updated ties.

November 9, 1983 - Found cast iron monument and updated ties.

June 16, 1986 - Found cast iron monument and updated ties.

May 30, 1991 - Found cast iron monument and updated ties.

August 19, 1994 - Found cast iron monument and updated ties.

January 2, 1998 - Found cast iron monument and updated ties. Set sign and post on north side

November 21, 2000 - Found cast iron monument with sign and post 1' north and established NAD 1983 (1996 Adjustment) Anoka County Project Coordinates by Static GPS methods. Updated ties.

March 2010 - Found cast iron monument down 0.5'± with sign and post on north side and updated ties.

March 16, 2015 - Found cast iron monument down 0.5'± with sign and post on north side. Verified position by VRS GPS methods. and updated ties.

January 24, 2020 - Found cast iron monument down 0.5'± with sign and post on north side and updated ties.

July 15, 2022- Found cast iron monument down 0.5'± with sign and post on north side and updated ties.