

CERTIFICATE OF LOCATION OF GOVERNMENT CORNER

County of Anoka

State of Minnesota

Meander Corner of Sec. 6 Township 31 Range 24

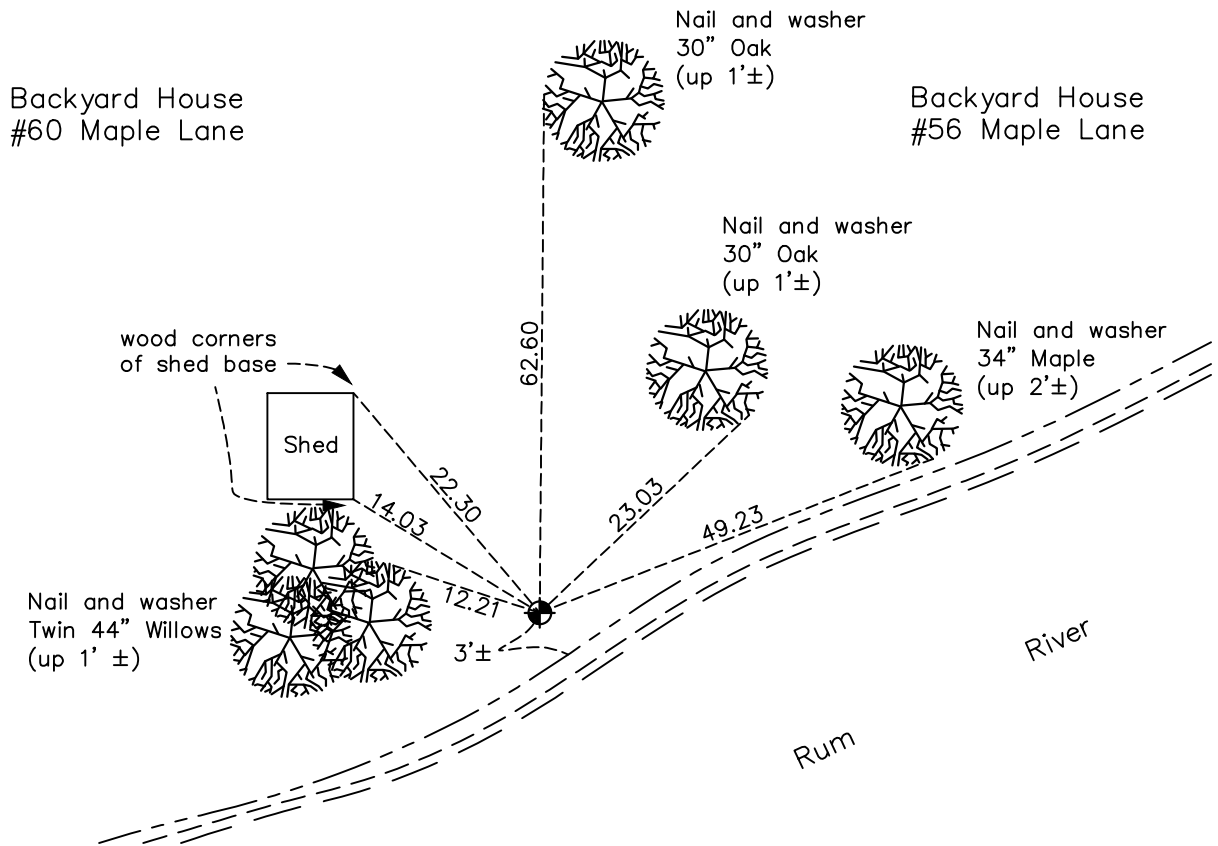
(On west line of section)

On the 19th day of April, 1961, the described corner was evidenced by a 1 1/2" Iron pipe

and to perpetuate the location of said corner, at the exact location thereof, a permanent marker was placed consisting of a cast iron monument

AND on the 18th day of July, 2022, said permanent marker was found down 0.3'± and the ties were updated (appears loose and leaning South)

Updated reference ties are as shown below.



N

 ANOKA COUNTY SURVEYOR
 S

Revision Date
 10/25/22

N.A.D. 1983 Coordinates
(1996 Adjustment)

County Project Coordinates	
Northing	161304.1081
Easting	468516.8791
Date	6/22/01

I hereby certify that this United States public land survey monument record is correct and complete to the best of my knowledge and belief.

David Zieglmeier Date 2/8/23

David Zieglmeier Anoka County Surveyor
 Minnesota License Number 46179

HISTORY OF GOVERNMENT CORNER

Page No. 15

County of Anoka

State of Minnesota

Meander Corner of Sec. 6 Township 31 Range 24
(On west line of section)

CORNER HISTORY:

April 19, 1961 - Replaced found 1 1/2" iron pipe, down 0.8'±, with a cast iron monument . Updated ties.

July 28, 1966 - Found cast iron monument and updated ties.

August 6, 1970 - Found cast iron monument and updated ties.

July 2, 1974 - Found cast iron monument and updated ties.

June 15, 1977 - Found cast iron monument and updated ties.

July 10, 1980 - Found cast iron monument and updated ties.

November 14, 1983 - Found cast iron monument and updated ties.

June 23, 1986 - Found cast iron monument and updated ties.

May 30, 1991 - Found cast iron monument and updated ties.

August 22, 1994 - Found cast iron monument and updated ties.

June 12, 2001 - Found cast iron monument and updated ties.

June 22, 2001 - Found cast iron monument and established NAD 1983 (1996 Adjustment) Anoka County Project Coordinates by Static GPS methods.

March 16, 2010 - Found cast iron monument down 0.3'± and updated ties.

April 13, 2015 - Found cast iron monument down 0.3'± and updated ties.

January 24, 2020 - Found cast iron monument down 0.3'± (appears to be loose and leaning South). Verified position by VRS GPS methods. Updated ties.

July 18, 2022 - Found cast iron monument down 0.3'±. Verified position by VRS GPS methods. Updated ties.