

# CERTIFICATE OF LOCATION OF GOVERNMENT CORNER

County of Anoka

State of Minnesota

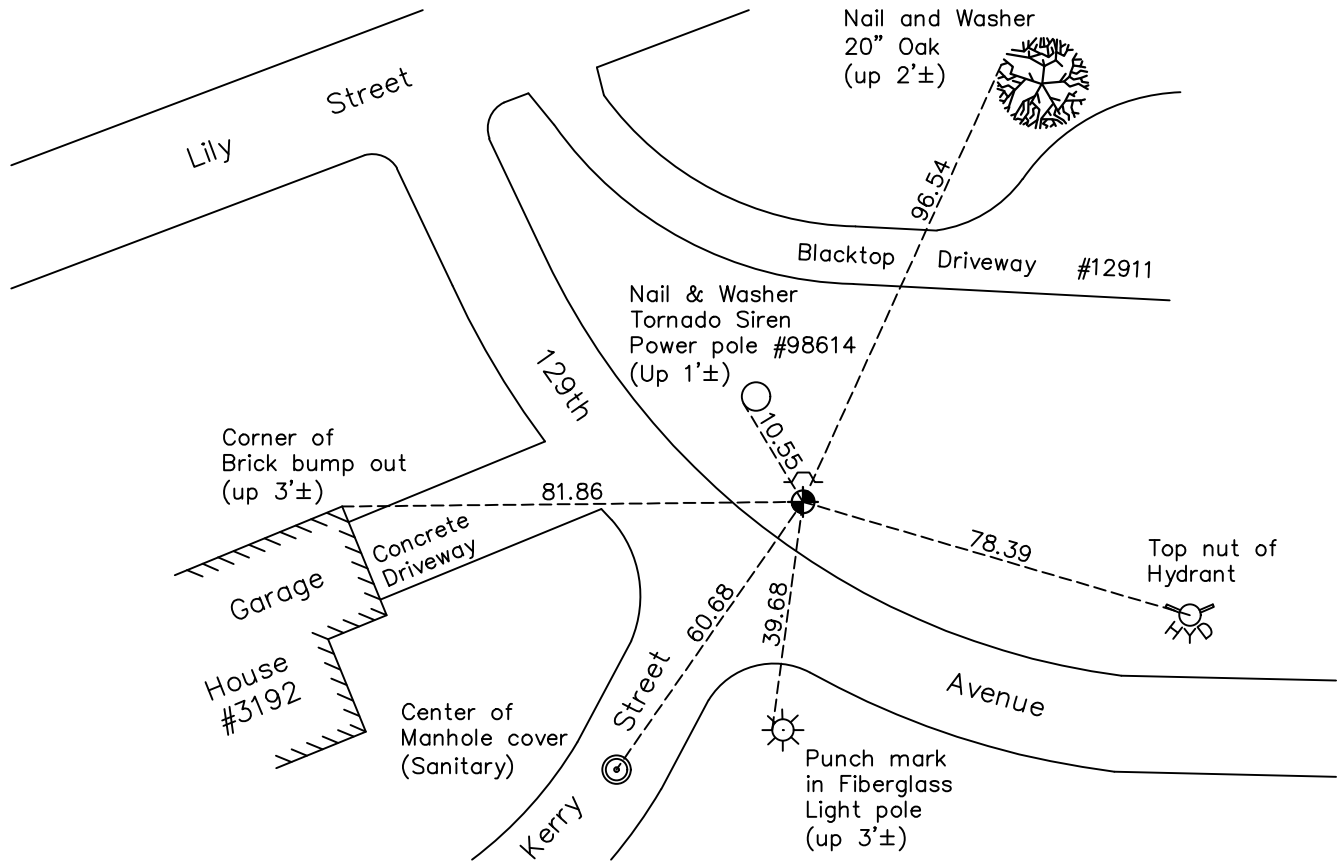
## East 1/4 Corner of Sec. 5 Township 31 Range 24

On the 22nd day of July, 1970, the described corner was evidenced by a field stone monument

and to perpetuate the location of said corner, at the exact location thereof, a permanent marker was placed consisting of a cast iron monument

AND on the 15th day of July, 2022, said permanent marker was found down 0.8' with a sign and post 2.1'± to the north and the ties were updated

Updated reference ties are as shown below.



Revision Date

10/31/2022

N.A.D. 1983 Coordinates  
(1996 Adjustment)

| County Project Coordinates |             |
|----------------------------|-------------|
| Northing                   | 161823.3488 |
| Easting                    | 479135.0871 |
| Date                       | 8/07/01     |

I hereby certify that this United States public land survey monument record is correct and complete to the best of my knowledge and belief.

*David Zieglmeier* Date 2/8/23

David Zieglmeier Anoka County Surveyor  
Minnesota License Number 46179

# HISTORY OF GOVERNMENT CORNER

Page No. 18

County of Anoka

State of Minnesota

East 1/4 Corner of Sec. 5 Township 31 Range 24

## **CORNER HISTORY:**

April 10, 1943 - Cartwright found field stone down 1'. Notes call for a granite monument but found field stone only. Stone has been chiseled roughly square. Established ties to stone.

August 9, 1955 - C.E. Coulter found field stone and updated ties.

February 17, 1960 - Found field stone down 8" with a pinched iron pipe on east side and updated ties.

June 8, 1964 - Found field stone and updated ties.

December 2, 1965 - Found field stone and updated ties.

July 14, 1966 - Found field stone and updated ties.

July 22, 1970 - Set broken cast iron monument flush with surface on top of field stone and updated ties. Monument is 4'± north and 8'± east of extended centerlines.

July 2, 1974 - Found cast iron monument and updated ties.

June 16, 1977 - Found cast iron monument and updated ties.

June 20, 1980 - Found cast iron monument and updated ties.

August 16, 1990 - Found cast iron monument and set a sign and post on south side of monument. Updated ties.

August 8, 1994 - Found cast iron monument and updated ties.

September 3, 1997 - Set construction (transit)ties and removed cast iron monument prior to construction.

June 16, 1998 - Set cast iron monument after construction using construction ties and set sign and post on east side of monument.

August 7, 2001 - Found cast iron monument and established NAD 1983 (1996 Adjustment) Anoka County Project Coordinates by Static GPS methods. Updated ties.

February 17, 2010 - Found cast iron monument down 0.8'± and updated ties.

April 13, 2015 - Found cast iron monument down 0.8'±. Verified position by VRS GPS methods. Updated ties.

January 23, 2020 - Found cast iron monument down 0.8'±. Verified position by VRS GPS methods. Updated ties.

July 15, 2022 - Found cast iron monument down 0.8'±. Verified position by VRS GPS methods. Updated ties.