

CERTIFICATE OF LOCATION OF GOVERNMENT CORNER

County of Anoka

State of Minnesota

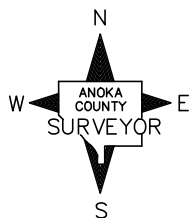
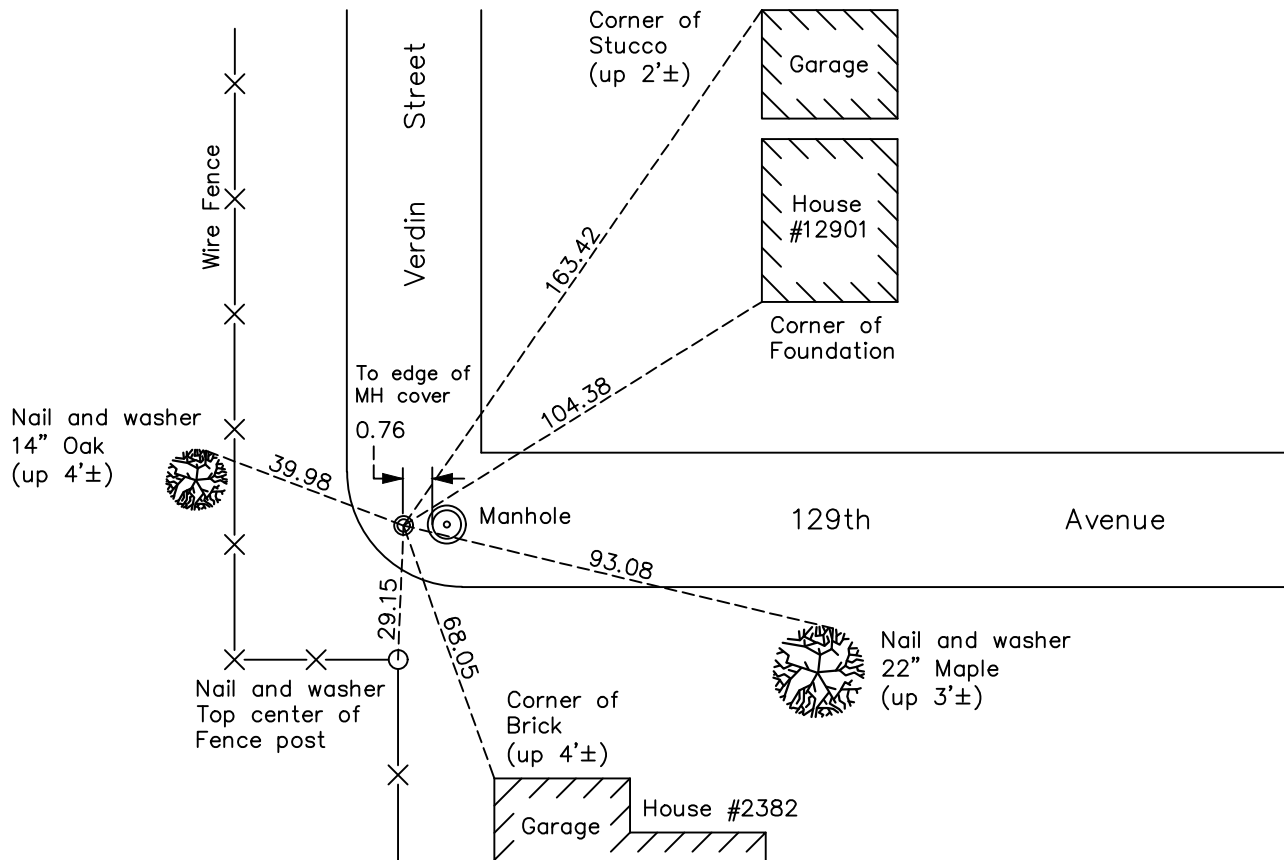
East 1/4 Corner of Sec. 4 Township 31 Range 24

On the 9th day of October, 1986, the described corner was evidenced by a cast iron monument

and to perpetuate the location of said corner, at the exact location thereof, a permanent marker was placed consisting of a 1/2" iron pipe

AND on the 3rd day of November, 2023, said permanent marker was reset 8" CIM after road const, set in concrete, using static GPS method. Updated ties and verified position w/ RTK GPS.

Updated reference ties are as shown below.



Revision Date
 11/06/2023

N.A.D. 1983 Coordinates
 (1996 Adjustment)

County Project Coordinates	
Northing	161865.6851
Easting	484448.7551
Date	8/10/01

I hereby certify that this United States public land survey monument record is correct and complete to the best of my knowledge and belief.
David Zieglmeier Date 12/11/23
 David Zieglmeier Anoka County Surveyor
 Minnesota License Number 46179

HISTORY OF GOVERNMENT CORNER

Page No. 19

County of Anoka

State of Minnesota

East 1/4 Corner of Sec. 4 Township 31 Range 24

CORNER HISTORY:

December 15, 1944 - Found U.S. Bearing Tree, an 18" rotten stump with old square nail driven into it up 16". No information given as to what is set in the corner position.

August 2, 1960 - Found concrete monument down 0.2' with an iron pipe on the north side and updated ties.

6/16/64, 7/22/66, 7/21/70 - Found concrete monument and updated ties. Iron pipe could not be found.

July 3, 1974 - Replaced concrete monument with a cast iron monument set down 0.1' and updated ties.

6/16/77, 6/20/80 - Found cast iron monument and updated ties.

October 9, 1986 - Updated ties and removed cast iron monument prior to construction. Set 1/2" iron pipe in location of monument.

1/19/88, 8/14/90, 8/17/94, 2/23/95 - Found 1/2" iron pipe and updated ties.

August 10, 2001 - Found 1/2" iron pipe and established NAD 1983 (1996 Adjustment) Anoka County Project Coordinates by Static GPS methods.

February 8, 2010 - Found 1/2" iron pipe and updated ties.

4/13/15, 1/17/20, 6/6/22 - Found 1/2" iron pipe. Verified position by VRS GPS methods. Updated ties.

April 14, 2023 - Found 1/2" iron pipe. Verified position by RTK GPS methods. Updated ties before road construction.

November 3, 2023 - Reset 8" Cast Iron Monument after Road Construction, set in concrete, using static GPS method. Updated ties after setting and verified position with RTK GPS method.