

# CERTIFICATE OF LOCATION OF GOVERNMENT CORNER

County of Anoka

State of Minnesota

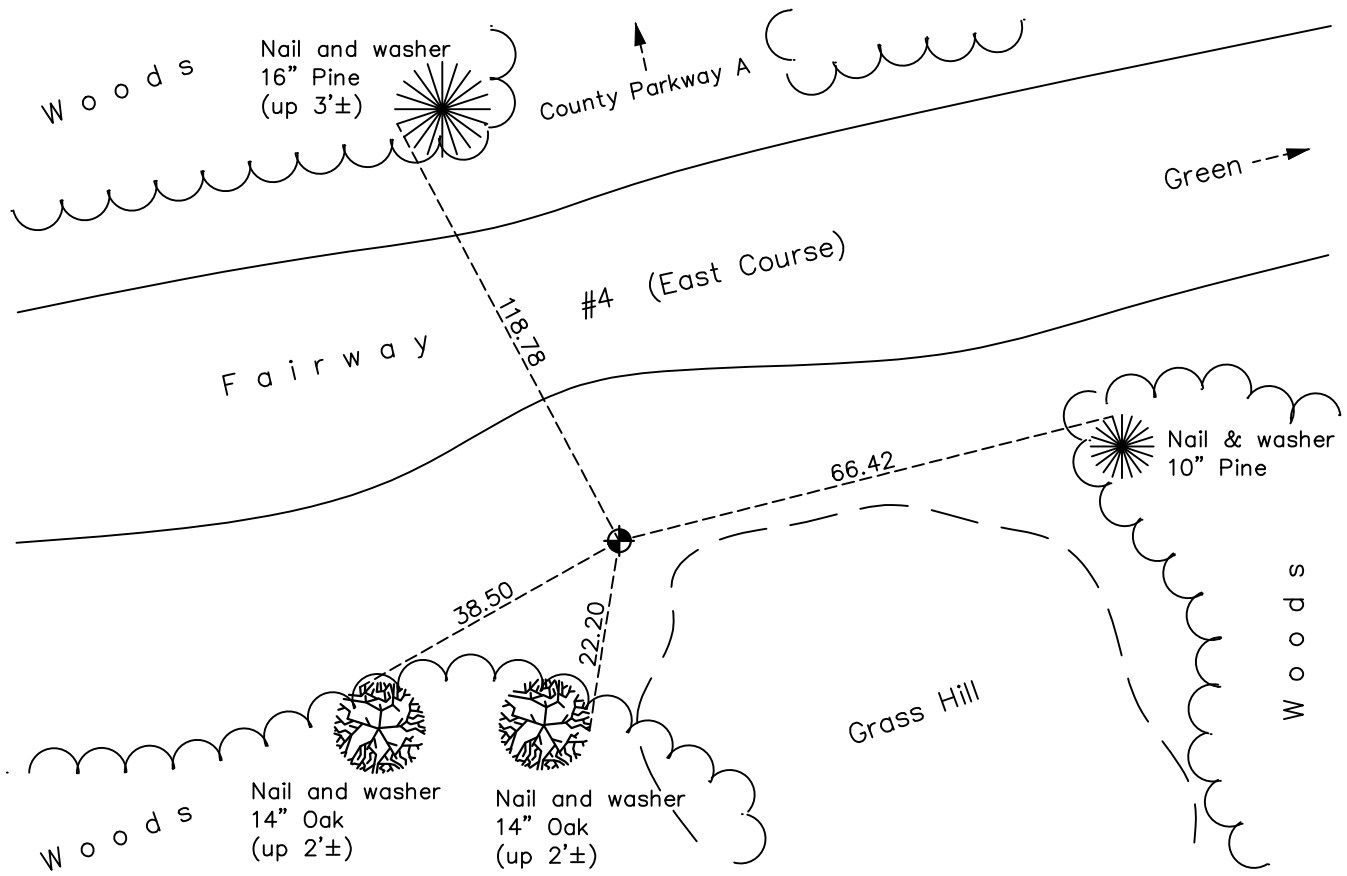
## West 1/16 Corner of Sec. 1 Township 31 Range 24 (of Northwest Quarter)

On the 11th day of October, 1966, the described corner was evidenced by area resurvey

and to perpetuate the location of said corner, at the exact location thereof, a permanent marker was placed consisting of a cast iron monument

AND on the 10th day of February, 2023, said permanent marker was found down 2'± and established the position by County RTK GPS method and updated the ties

Updated reference ties are as shown below.



Revision Date  
2/16/2023

N.A.D. 1983 Coordinates  
(2011 Adjustment)

County Project Coordinates	
Northing	<u>162984.919</u>
Easting	<u>494896.853</u>
Date	<u>2/10/2023</u>

I hereby certify that this United States public land survey monument record is correct and complete to the best of my knowledge and belief.  
*David Zieglmeier* Date 2/28/23  
 David Zieglmeier Anoka County Surveyor  
 Minnesota License Number 46179

# HISTORY OF GOVERNMENT CORNER

County of Anoka

State of Minnesota

West 1/16 Corner of Sec. 1 Township 31 Range 24  
(of Northwest Quarter)

## **CORNER HISTORY:**

October 11, 1966 - Set cast iron monument using area resurvey. Found iron pipe at 1/16 corner position. Established ties to monument.

July 21, 1970 - Found cast iron monument down 0.4'± and updated ties.

July 21, 1974 - Found cast iron monument and updated ties.

June 16, 1977 - Found cast iron monument and updated ties.

June 23, 1980 - Found cast iron monument and updated ties.

January 7, 2020 - Found cast iron monument down 2'±. Updated ties.

February 10, 2023 - Found cast iron monument down 2'±, established coordinates of position by using County RTK GPS method and updated the ties.