

CERTIFICATE OF LOCATION OF GOVERNMENT CORNER

County of Anoka State of Minnesota

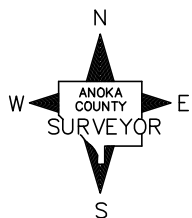
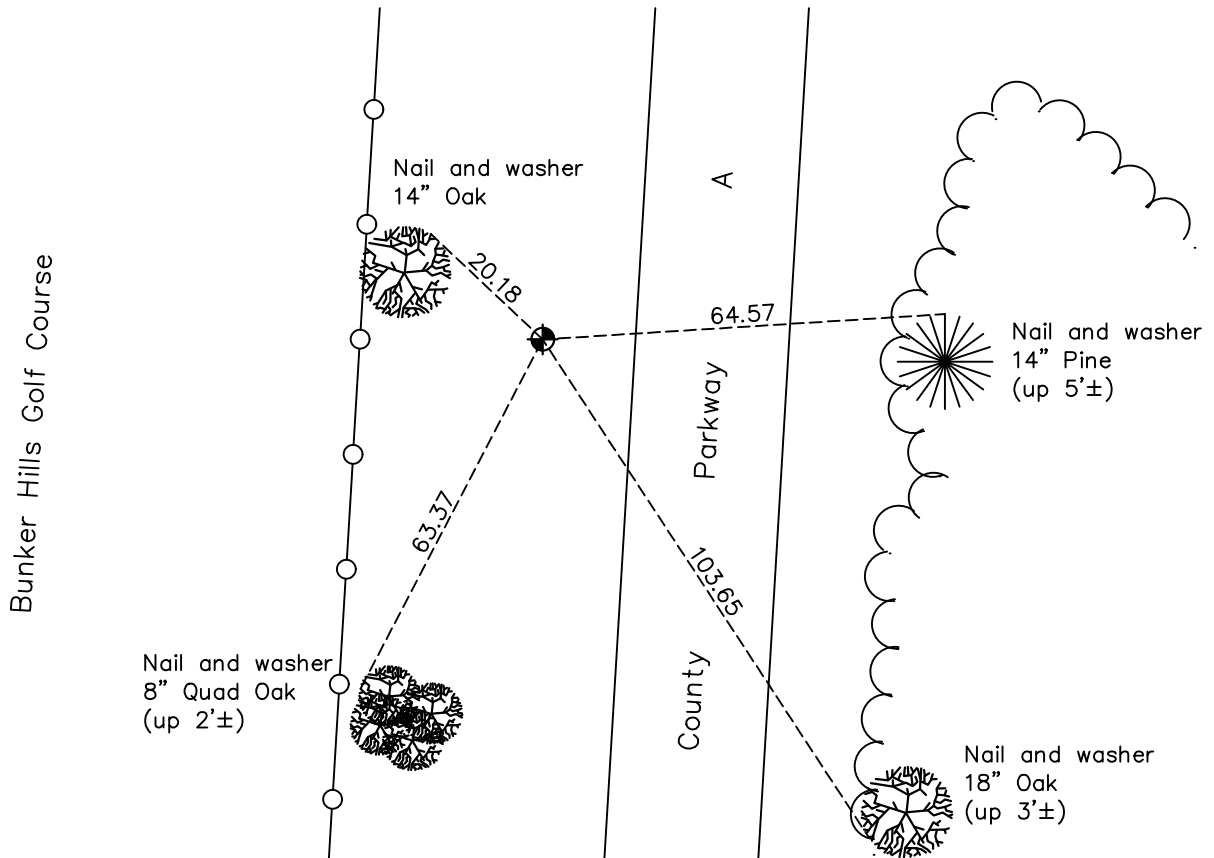
South 1/16 Corner of Sec. 1 Township 31 Range 24 (of Northwest Quarter)

On the day of November, 1968, the described corner was evidenced by area resurvey
 setting temporary bridge spike

and to perpetuate the location of said corner, at the exact location thereof, a permanent marker was placed consisting of a cast iron monument

AND on the 9th day of February, 2023, said permanent marker was found broken and replaced
with a new CIM then established position by County RTK GPS method and updated the ties

Updated reference ties are as shown below.



Revision Date
2/16/2023

N.A.D. 1983 Coordinates
(2011 Adjustment)

County Project Coordinates	
Northing	<u>161683.308</u>
Easting	<u>496194.340</u>
Date	<u>2/09/2023</u>

I hereby certify that this United States public land survey monument record is correct and complete to the best of my knowledge and belief.

David Zieglmeier Date 2/28/23

David Zieglmeier Anoka County Surveyor
Minnesota License Number 46179

HISTORY OF GOVERNMENT CORNER

Page No. 23

County of Anoka

State of Minnesota

South 1/16 Corner of Sec. 1 Township 31 Range 24
(of Northwest Quarter)

CORNER HISTORY:

March 8, 1967 - Set temporary bridge spike using area resurvey. Established ties to bridge spike. Monument to be set at a later date.

September 26, 1967 - Found bridge spike and added additional corner ties.

November 1968 - Found bridge spike and replaced with a cast iron monument flush. Updated ties.

July 21, 1970 - Found cast iron monument and updated ties.

July 3, 1974 - Found cast iron monument and updated ties.

June 16, 1977 - Found cast iron monument and updated ties.

June 23, 1980 - Found cast iron monument and updated ties.

January 7, 2020 - Found cast iron monument broken off. Center fin of broken monument used for position. Checked position by VRS GPS methods. Updated ties.

February 9, 2023 - Found cast iron monument broken, replaced with new CIM then established coordinates of position by County RTK GPS method and updated the ties.