

CERTIFICATE OF LOCATION OF GOVERNMENT CORNER

County of Anoka State of Minnesota

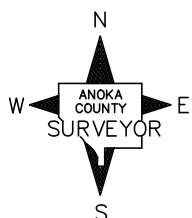
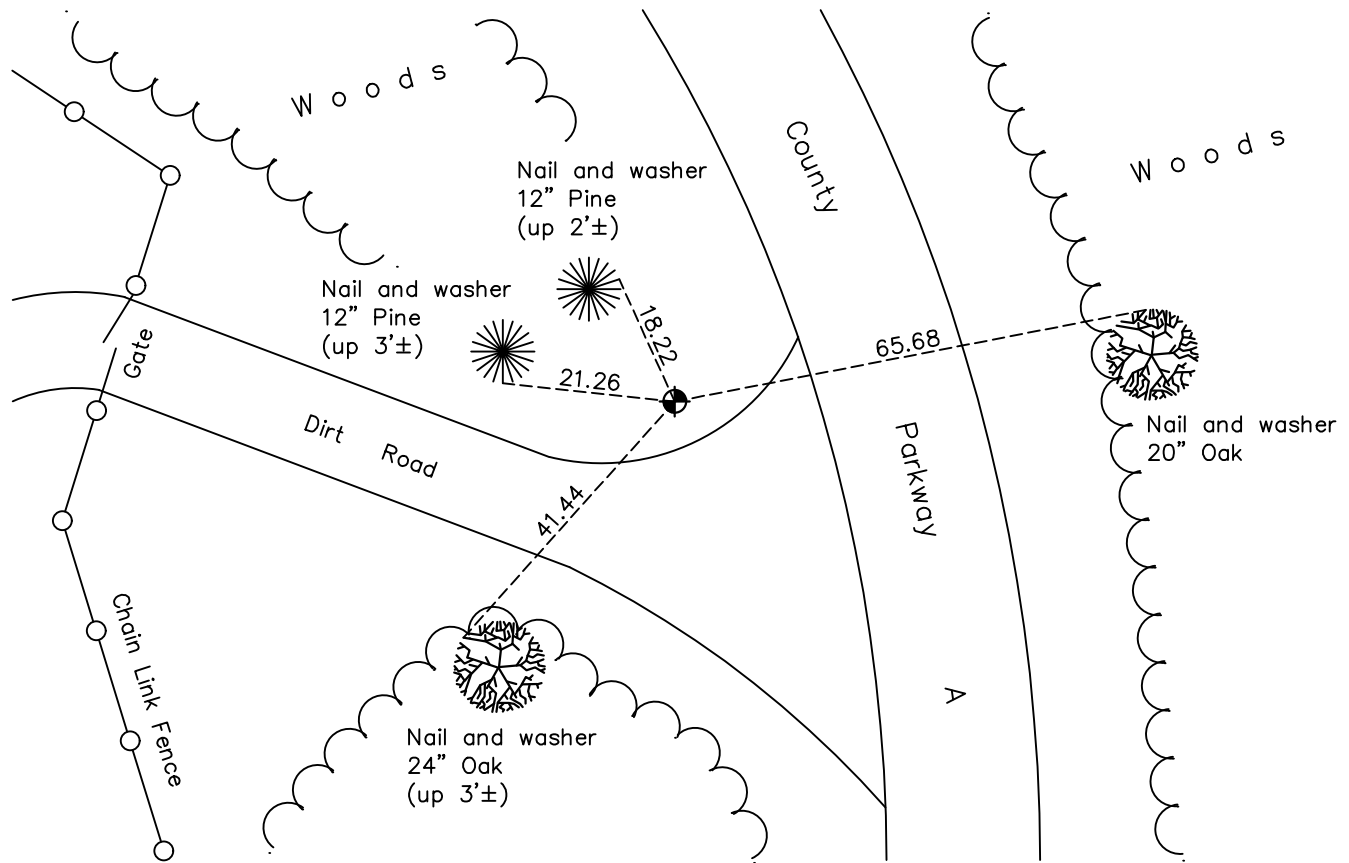
Center Corner of Sec. 1 Township 31 Range 24
(of Northwest Quarter)

On the 28th day of March, 1967, the described corner was evidenced by area resurvey
setting temporary bridge spike

and to perpetuate the location of said corner, at the exact location thereof, a permanent marker was placed consisting of a cast iron monument found July 21, 1970

AND on the 9th day of February, 2023, said permanent marker was found down 0.8'± and established the position by County RTK GPS method and updated the ties

Updated reference ties are as shown below.



Revision Date
2/16/2023

N.A.D. 1983 Coordinates
(2011 Adjustment)

County Project Coordinates	
Northing	<u>162987.307</u>
Easting	<u>496239.911</u>
Date	<u>02/09/2023</u>

I hereby certify that this United States public land survey monument record is correct and complete to the best of my knowledge and belief.

David Zieglmeier Date 2/28/23

David Zieglmeier Anoka County Surveyor
Minnesota License Number 46179

HISTORY OF GOVERNMENT CORNER

Page No. 24

County of Anoka

State of Minnesota

Center Corner of Sec. 1 Township 31 Range 24
(of Northwest Quarter)

CORNER HISTORY:

March 28, 1967 - Set temporary bridge spike using area resurvey. Established ties to bridge spike.

July 21, 1970 - Found cast iron monument and updated ties.

July 3, 1974 - Found cast iron monument and updated ties.

June 16, 1977 - Found cast iron monument and updated ties.

June 23, 1980 - Found cast iron monument and updated ties.

January 7, 2020 - Found cast iron monument down 0.8'±. Verified position by VRS GPS methods. Updated ties.

February 9, 2023 - Found cast iron monument down 0.8'±, established coordinates of position by using County RTK GPS method and updated the ties.