

# CERTIFICATE OF LOCATION OF GOVERNMENT CORNER

County of Anoka

State of Minnesota

Witness Corner of Sec. 1 Township 31 Range 24

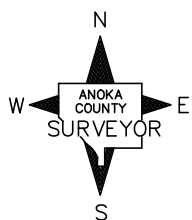
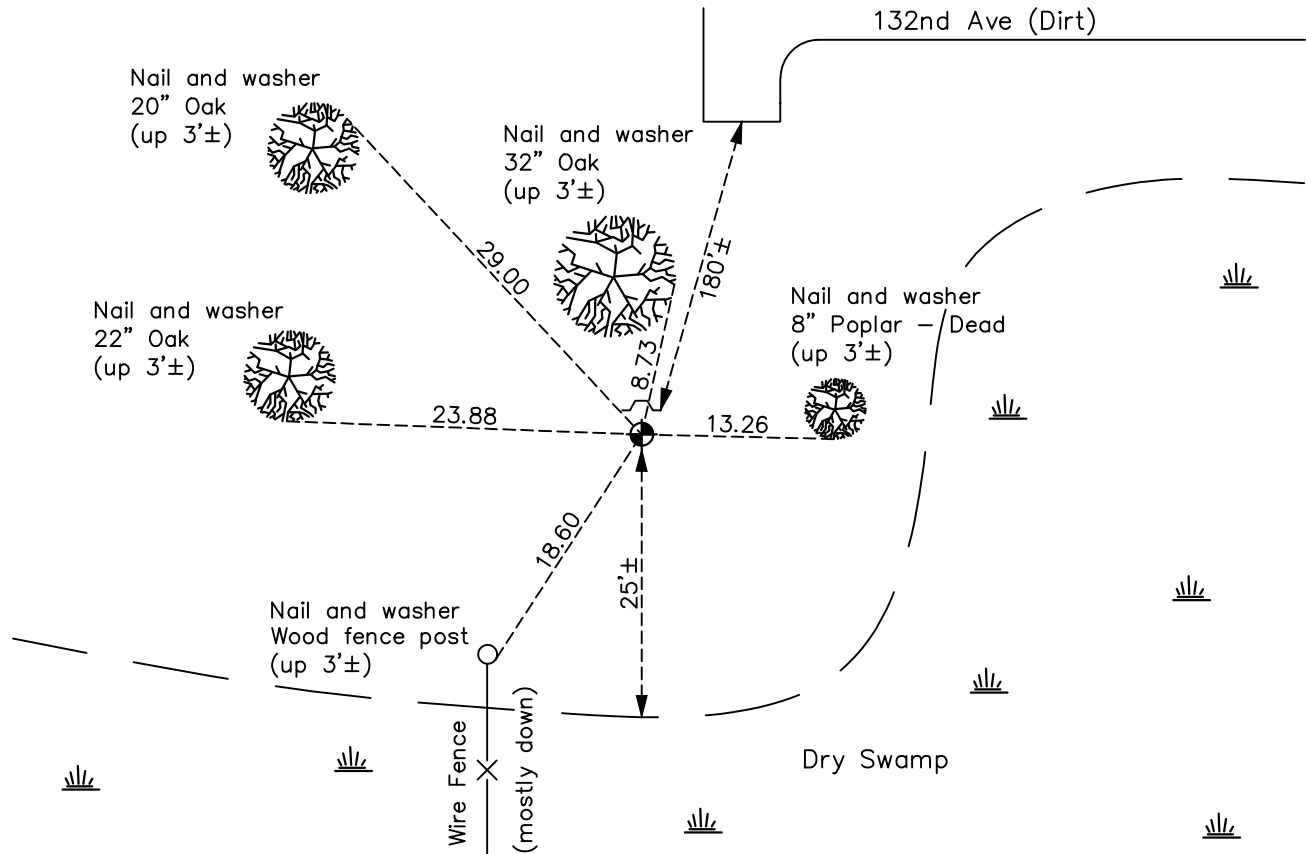
(On east line of NE1/4)

On the 3rd day of February, 1976, the described corner was evidenced by area resurvey

and to perpetuate the location of said corner, at the exact location thereof, a permanent marker was placed consisting of a cast iron monument

AND on the 21st day of July, 2022, said permanent marker was found up 0.3'± with a sign and post on the north side and the ties were updated

Updated reference ties are as shown below.



Revision Date

10/31/2022

N.A.D. 1983 Coordinates  
(1996 Adjustment)

County Project Coordinates	
Northing	<u>163385.4892</u>
Easting	<u>500210.0603</u>
Date	<u>2/04/00</u>

I hereby certify that this United States public land survey monument record is correct and complete to the best of my knowledge and belief.

David Zieglmeier Date 2/8/23

David Zieglmeier Anoka County Surveyor  
Minnesota License Number 46179

# HISTORY OF GOVERNMENT CORNER

Page No. 25

County of Anoka

State of Minnesota

Witness Corner of Sec. 1 Township 31 Range 24  
(On east line of NE1/4)

## **CORNER HISTORY:**

February 3, 1976 - Set cast iron monument using area resurvey, set a sign and post on the north side and established ties to monument.

July 15, 1983 - Found cast iron monument and updated ties.

June 20, 1986 - Found cast iron monument and updated ties.

February 4, 2000 - Found cast iron monument with a sign and post on the north side and established NAD 1983 (1996 Adjustment) Anoka County Project Coordinates by Static GPS methods. Updated ties.

March 2010 - Found cast iron monument up 0.4' with a sign and post on the north side and updated ties.

April 16, 2015- Found cast iron monument up 0.3'± with a sign and post on the north side. Verified position by VRS GPS methods. Updated ties.

January 15, 2020- Found cast iron monument up 0.3'± with a sign and post on the north side. Verified position by VRS GPS methods. Updated ties.

July 21, 2022 - Found cast iron monument up 0.3'±, verified position by VRS GPS method and updated ties.