

CERTIFICATE OF LOCATION OF GOVERNMENT CORNER

County of Anoka

State of Minnesota

Witness Corner of Sec. 1 Township 31 Range 24

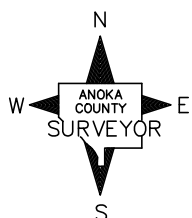
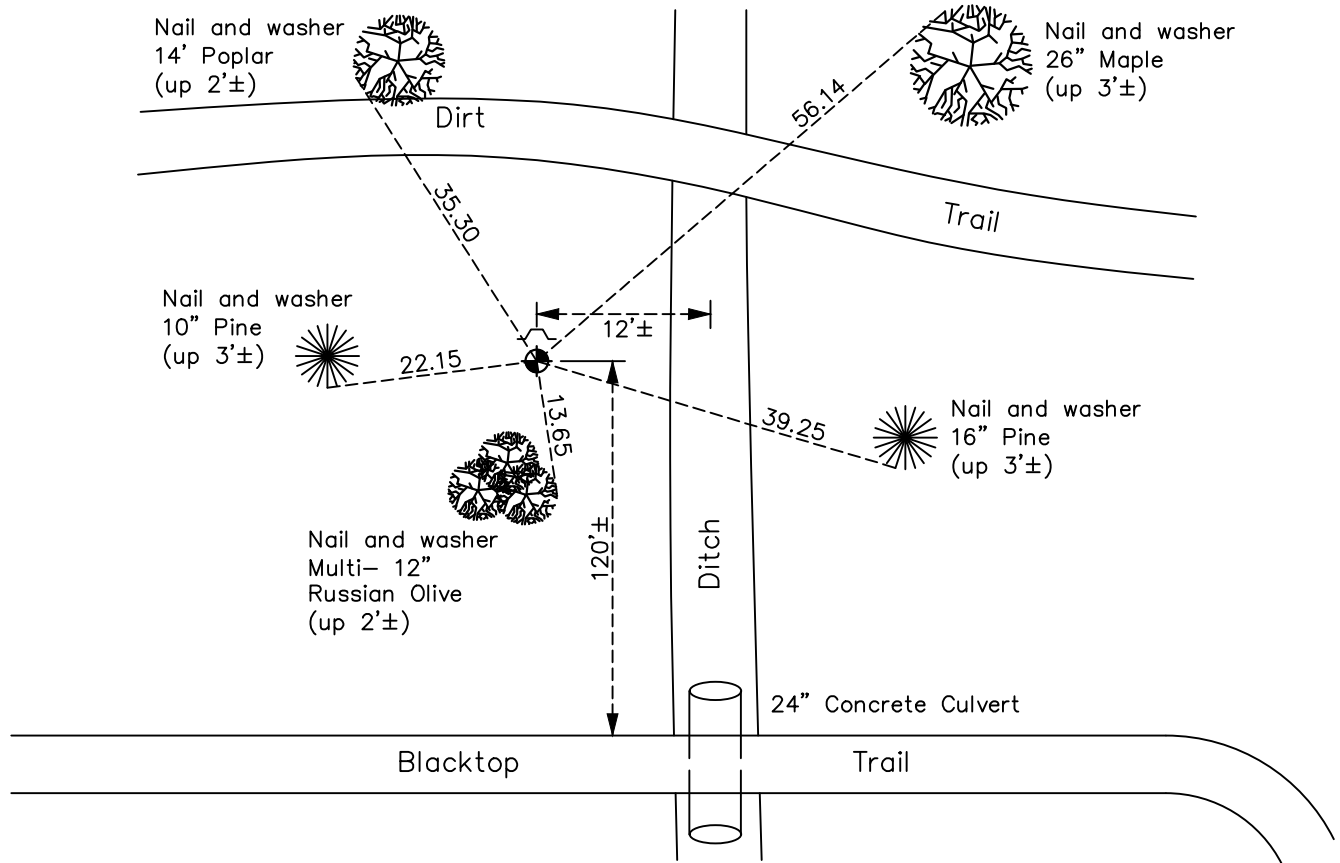
(On east line of SE1/4)

On the 3rd day of February, 1976, the described corner was evidenced by area resurvey

and to perpetuate the location of said corner, at the exact location thereof, a permanent marker was placed consisting of a cast iron monument

AND on the 21st day of July, 2022, said permanent marker was found flush with a sign and post on the north side and the ties were updated

Updated reference ties are as shown below.



Revision Date
10/31/2022

N.A.D. 1983 Coordinates
(1996 Adjustment)

County Project Coordinates	
Northing	<u>160935.1893</u>
Easting	<u>500206.8996</u>
Date	<u>2/03/00</u>

I hereby certify that this United States public land survey monument record is correct and complete to the best of my knowledge and belief.

David Zieglmeier Date 2/8/23

David Zieglmeier Anoka County Surveyor
 Minnesota License Number 46179

HISTORY OF GOVERNMENT CORNER

County of Anoka

State of Minnesota

Witness Corner of Sec. 1 Township 31 Range 24
(On east line of SE1/4)

CORNER HISTORY:

February 3, 1976 - Set cast iron monument using area resurvey, set a sign and post on the north side and established ties to monument.

June 16, 1977 - Found cast iron monument and updated ties.

June 23, 1980 - Found cast iron monument and updated ties.

July 15, 1983 - Found cast iron monument and updated ties.

June 18, 1986 - Found cast iron monument and updated ties.

February 3, 2000 - Found cast iron monument with a sign and post on the north side and established NAD 1983 (1996 Adjustment) Anoka County Project Coordinates by Static GPS methods. Updated ties.

March 22, 2010 - Found cast iron monument flush and updated ties. Sign and post were missing and need to be replaced.

April 16, 2015 - Found cast iron monument flush and updated ties.

January 22, 2020 - Found cast iron monument flush. Verified position by VRS GPS methods. Updated ties.

July 21, 2022 — Found cast iron monument flush. Verified position by VRS GPS methods. Updated ties.