

# CERTIFICATE OF LOCATION OF GOVERNMENT CORNER

County of Anoka

State of Minnesota

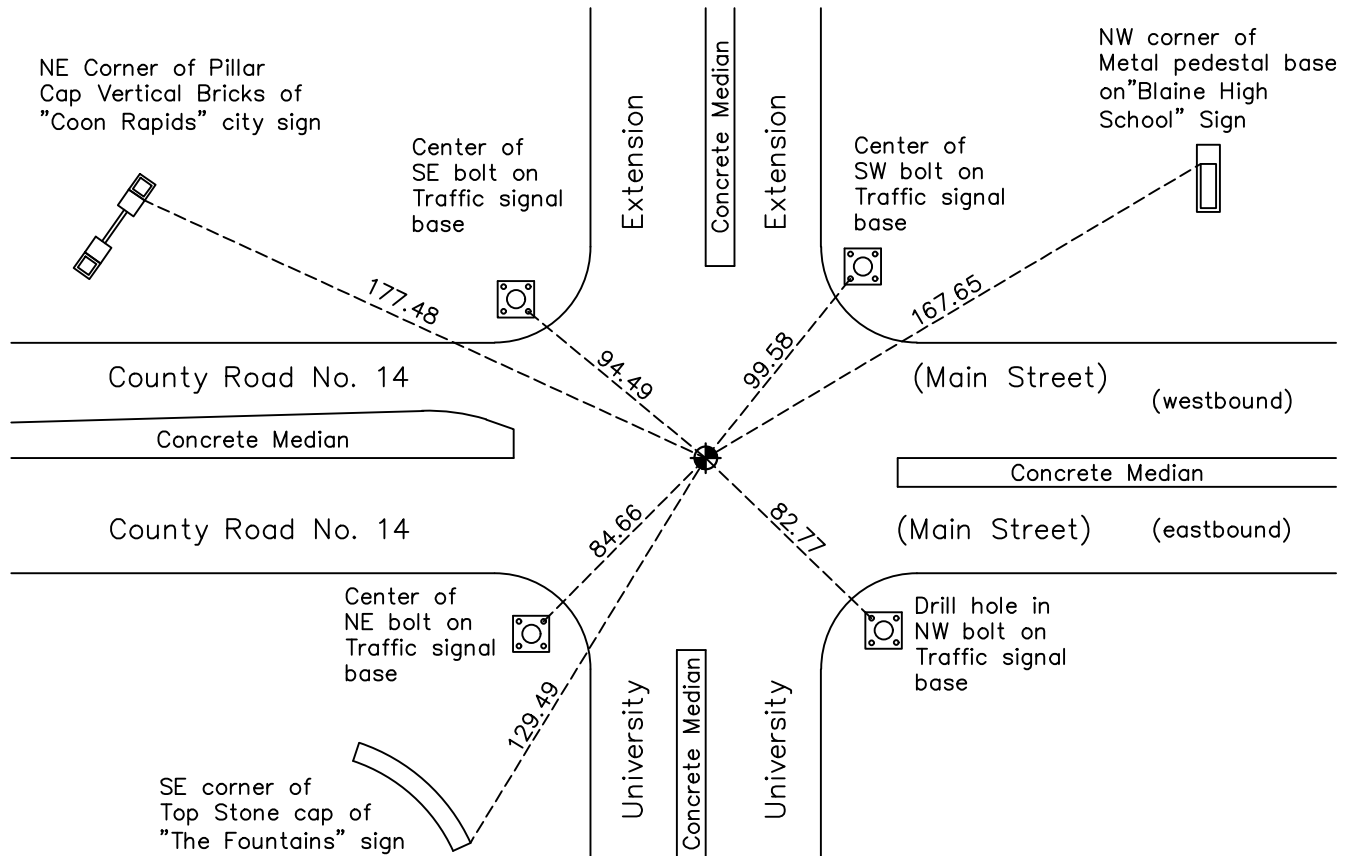
## Southeast Corner of Sec. 1 Township 31 Range 24

On the 29th day of August, 1960, the described corner was evidenced by a concrete monument

and to perpetuate the location of said corner, at the exact location thereof, a permanent marker was placed consisting of a cast iron monument

AND on the 12th day of July, 2022, said permanent marker was found flush and the ties were updated

Updated reference ties are as shown below.



N.A.D. 1983 Coordinates  
(1996 Adjustment)

County Project Coordinates	
Northing	158990.7382
Easting	500204.1178
Date	10/12/98

Revision Date  
10/31/2022

I hereby certify that this United States public land survey monument record is correct and complete to the best of my knowledge and belief.

*David Zieglmeier* Date 2/8/23

David Zieglmeier Anoka County Surveyor  
 Minnesota License Number 46179

# HISTORY OF GOVERNMENT CORNER

Page No. 27

County of Anoka

State of Minnesota

## Southeast Corner of Sec. 1 Township 31 Range 24

### **CORNER HISTORY:**

June 28, 1943 - H.A. Cartwright found concrete monument down 4". Established ties to monument.

July 1955 - Minder Engineering Co. found concrete monument and updated ties.

July 1957 - Minder Engineering Co. found concrete monument and updated ties.

August 29, 1960 - Found concrete monument down 2'. Set cast iron monument flush with surface and updated ties.

June 26, 1964 - Found cast iron monument and updated ties.

July 11, 1966 - Found cast iron monument and updated ties.

July 21, 1970 - Found cast iron monument and updated ties.

July 5, 1974 - Found cast iron monument and updated ties.

June 17, 1977 - Found cast iron monument and updated ties.

July 27, 1977 - Set construction ties (P.K. nails 200' and 300' North) prior to road construction.

September 21, 1977 - Found cast iron monument undisturbed after construction and updated ties. Set P.K. nails 2.00' North and East.

June 23, 1980 - Found cast iron monument and updated ties.

July 22, 1983 - Found cast iron monument and updated ties.

June 18, 1985 - Found cast iron monument and updated ties.

August 17, 1990 - Found cast iron monument and updated ties.

August 3, 1994 - Found cast iron monument and updated ties.

October 12, 1998 - Found cast iron monument and established NAD 1983 (1996 Adjustment) Anoka County Project Coordinates by Static GPS methods. Updated ties.

March 23, 2010 - Found cast iron monument and updated ties.

June 21, 2011 - Checked ties, verified location of corner by VRS GPS methods and removed cast iron monument prior to road construction.

September 11, 2012 - Set cast iron monument flush with surface after road construction using construction ties. Verified location of corner by Static GPS methods.

June 4, 2015 - Found cast iron monument. Verified position by VRS GPS methods. Updated ties.

January 22, 2020 - Found cast iron monument. Verified position by VRS GPS methods. Updated ties.

# HISTORY OF GOVERNMENT CORNER

Page No. 27  
History Page 2

County of Anoka

State of Minnesota

Southeast Corner of Sec. 1 Township 31 Range 24

## **CORNER HISTORY:**

July 12, 2022 - Found cast Iron Monument flush, verified position by VRS GPS method and updated ties.