

CERTIFICATE OF LOCATION OF GOVERNMENT CORNER

County of Anoka

State of Minnesota

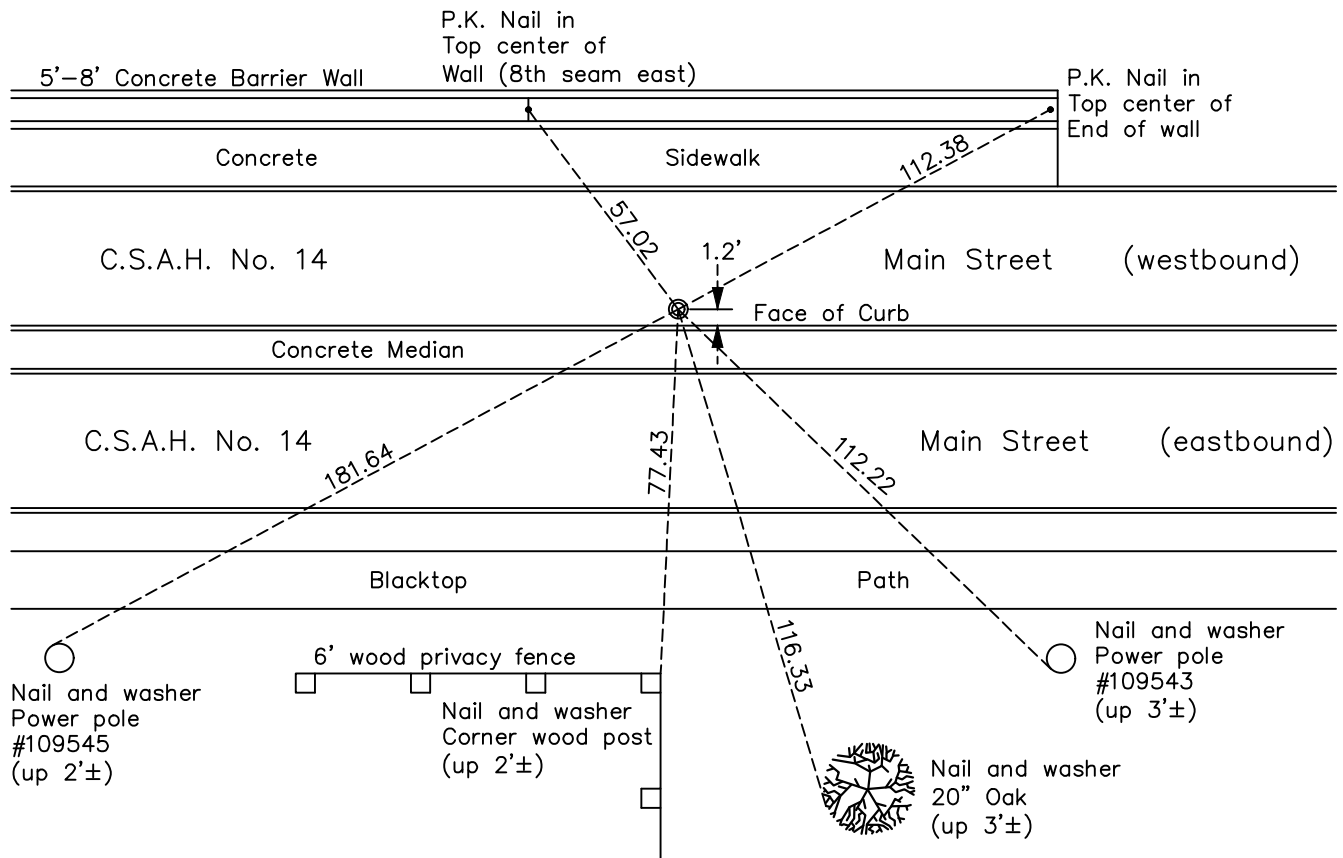
South 1/4 Corner of Sec. 1 Township 31 Range 24

On the 22nd day of August, 2012, the described corner was evidenced by a cast iron monument

and to perpetuate the location of said corner, at the exact location thereof, a permanent marker was placed consisting of 1/2" iron pipe with Anoka County cap 1.2' from face of curb

AND on the 21st day of July, 2022, said permanent marker was found flush in concrete curb and the ties were updated

Updated reference ties are as shown below.



Revision Date
 10/31/2022

N.A.D. 1983 Coordinates
 (1996 Adjustment)

County Project Coordinates	
Northing	158963.8720
Easting	497541.6709
Date	8/02/01

I hereby certify that this United States public land survey monument record is correct and complete to the best of my knowledge and belief.
David Zieglmeier Date 2/8/23
 David Zieglmeier Anoka County Surveyor
 Minnesota License Number 46179

HISTORY OF GOVERNMENT CORNER

Page No. 28

County of Anoka

State of Minnesota

South 1/4 Corner of Sec. 1 Township 31 Range 24

CORNER HISTORY:

November 25, 1944 - H.A. Cartwright found concrete monument down 4". Established ties to monument.

July 1955 - Minder Engineering Co. found concrete monument and updated ties.

August 29, 1960 - Found concrete monument broken off down 2'. Set cast iron monument flush with surface and updated ties.

June 26, 1964 - Found cast iron monument and updated ties.

July 11, 1966 - Found cast iron monument and updated ties.

July 21, 1970 - Found cast iron monument and updated ties.

July 5, 1974 - Found cast iron monument and updated ties.

June 17, 1977 - Found cast iron monument and updated ties.

June 23, 1980 - Found cast iron monument and updated ties.

December 14, 1983 - Found cast iron monument and updated ties.

June 24, 1986 - Found cast iron monument and updated ties.

June 24, 1991 - Found cast iron monument and updated ties.

August 2, 2001 - Found cast iron monument and established NAD 1983 (1996 Adjustment) Anoka County Project Coordinates by Static GPS methods. Updated ties.

March 30, 2010 - Found cast iron monument and updated ties.

June 21, 2011 - Updated ties, verified location with VRS and removed cast iron monument prior to road construction.

August 22, 2012 - Set 1/2" iron pipe with Anoka County cap flush with surface and 0.2' from face of curb after road construction using ties. Verified location of corner by Static GPS methods.

April 16, 2015 - Found 1/2" iron pipe with Anoka County cap 1.2' from face of curb. Verified position by VRS GPS methods. Updated ties.

January 15, 2020 - Found 1/2" iron pipe with Anoka County cap 1.2' from face of curb. Verified position by VRS GPS methods. Updated ties.

July 21, 2022 - Found 1/2" iron pipe with Anoka County cap 1.2' from face of curb. Verified position by VRS GPS methods. Updated ties.