

# CERTIFICATE OF LOCATION OF GOVERNMENT CORNER

County of Anoka

State of Minnesota

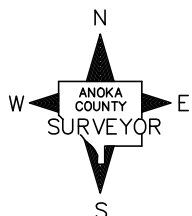
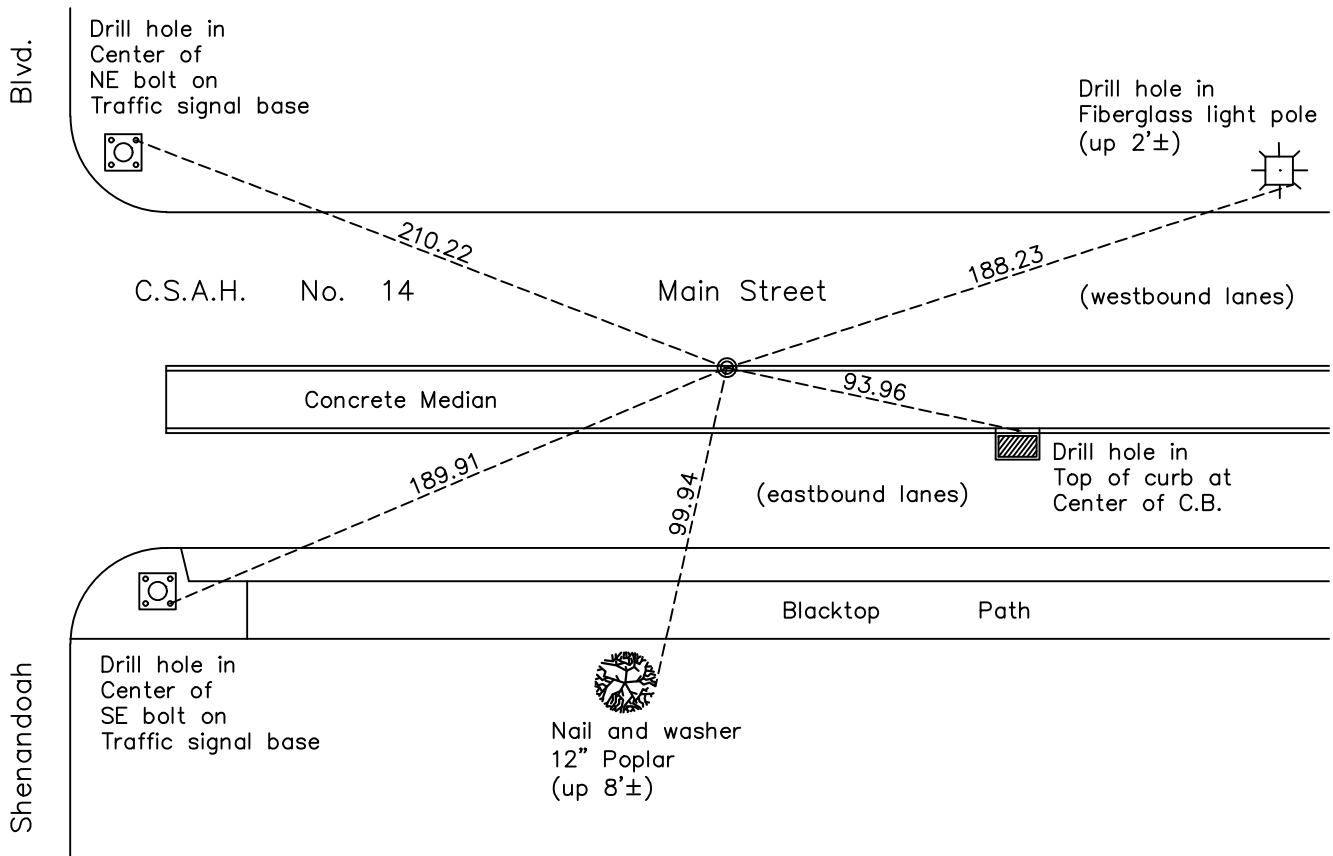
## South 1/4 Corner of Sec. 3 Township 31 Range 24

On the 22nd day of July, 2011, the described corner was evidenced by a cast iron monument

and to perpetuate the location of said corner, at the exact location thereof, a permanent marker was placed consisting of 1/2" iron pipe with 'Anoka County' cap in top of the curb

AND on the 6th day of July, 2022, said permanent marker was found flush in the North side of the concrete median and the ties were updated.

Updated reference ties are as shown below.



Revision Date  
10/31/2022

N.A.D. 1983 Coordinates  
(1996 Adjustment)

County Project Coordinates	
Northing	<u>159157.6682</u>
Easting	<u>487034.1686</u>
Date	<u>9/14/01</u>

I hereby certify that this United States public land survey monument record is correct and complete to the best of my knowledge and belief.

*David Zieglmeier* Date 2/8/23

David Zieglmeier Anoka County Surveyor  
Minnesota License Number 46179

# HISTORY OF GOVERNMENT CORNER

Page No. 32

County of Anoka

State of Minnesota

South 1/4 Corner of Sec. 3 Township 31 Range 24

## **CORNER HISTORY:**

July 10, 1946 - H.A. Cartwright found concrete monument and established ties to monument.

August 17, 1960 - Replaced iron pipe found with a cast iron monument set flush with surface. Updated ties.

June 29, 1964 - Found cast iron monument and updated ties.

July 21, 1966 - Found cast iron monument and updated ties.

July 21, 1970 - Found cast iron monument and updated ties.

July 5, 1974 - Found cast iron monument and updated ties.

June 17, 1977 - Found cast iron monument and updated ties.

June 25, 1980 - Found cast iron monument and updated ties.

December 15, 1983 - Found cast iron monument and updated ties.

June 24, 1986 - Found cast iron monument and updated ties.

June 24, 1991 - Found cast iron monument and updated ties.

September 14, 2001 - Found cast iron monument and established NAD 1983 (1996 Adjustment) Anoka County Project Coordinates by Static GPS methods. Updated ties.

March 18, 2010 - Found cast iron monument flush with surface and updated ties.

Date unknown - Set construction ties and removed cast iron monument prior to road construction.

July 22, 2011 - Set 1/2" iron pipe with 'Anoka County' cap in top of curb on north side of concrete median after road construction using construction ties. Verified location of corner by Static GPS methods.

April 16, 2015 - Found 1/2 " iron pipe with 'Anoka County' cap in top of the curb on North side of concrete median. Verified position by VRS GPS methods. Updated ties.

January 24, 2020 - Found 1/2 " iron pipe with 'Anoka County' cap in top of the curb on North side of Concrete median. Verified position by VRS GPS methods. Updated ties

July 6, 2022 - Found 1/2 " iron pipe with 'Anoka County' cap in top of the curb on North side of Concrete median. Verified position by VRS GPS methods. Updated ties