

CERTIFICATE OF LOCATION OF GOVERNMENT CORNER

County of Anoka

State of Minnesota

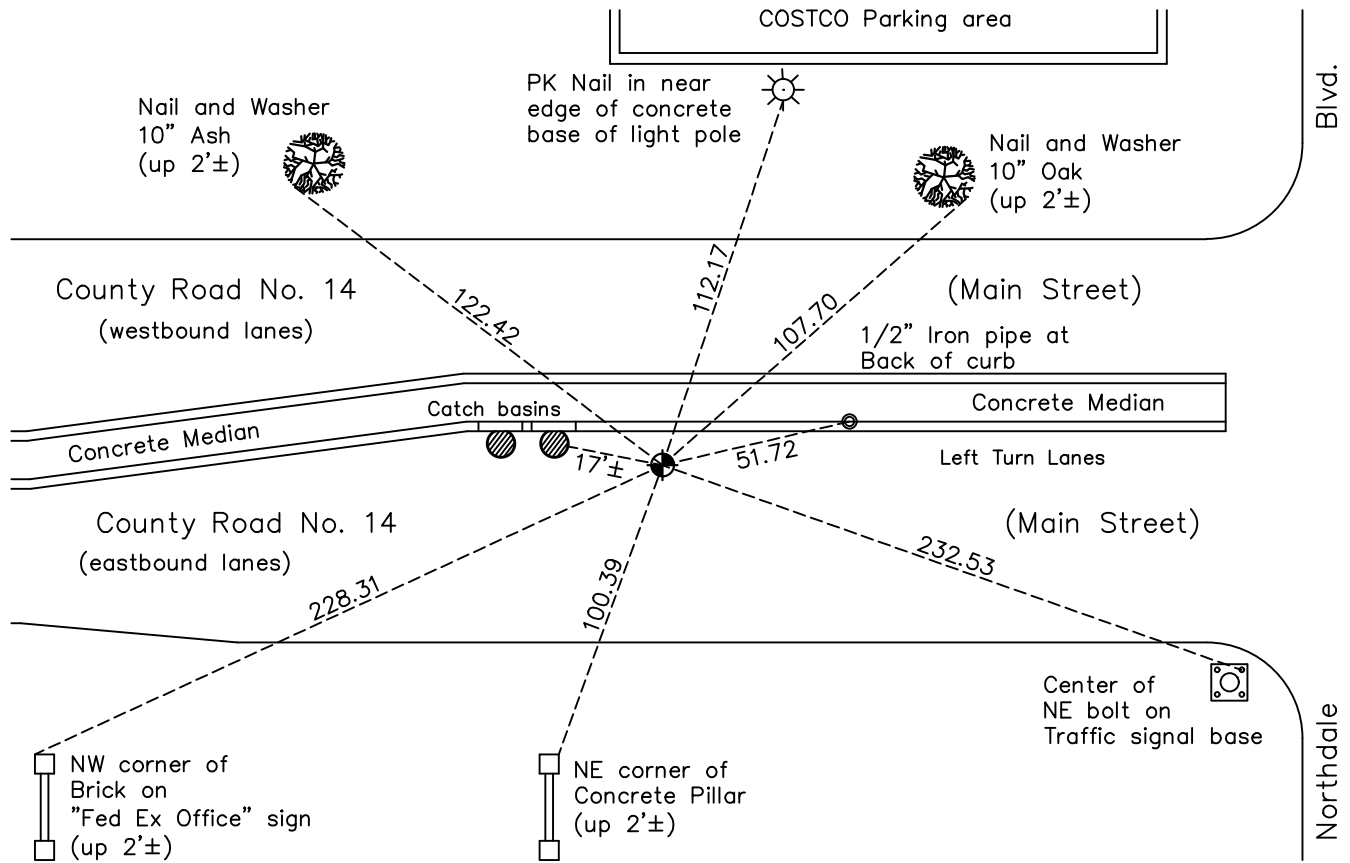
Southeast Corner of Sec. 5 Township 31 Range 24

On the 16th day of August, 1960, the described corner was evidenced by a granite monument

and to perpetuate the location of said corner, at the exact location thereof, a permanent marker was placed consisting of a cast iron monument

AND on the 3rd day of August, 2022, said permanent marker was found flush and the ties were updated

Updated reference ties are as shown below.



Revision Date
10/31/2022

N.A.D. 1983 Coordinates
(1996 Adjustment)

County Project Coordinates	
Northing	<u>159175.1864</u>
Easting	<u>479066.2631</u>
Date	<u>9/28/01</u>

I hereby certify that this United States public land survey monument record is correct and complete to the best of my knowledge and belief.
David Zieglmeier Date 2/8/23
David Zieglmeier Anoka County Surveyor
Minnesota License Number 46179

HISTORY OF GOVERNMENT CORNER

Page No. 35

County of Anoka

State of Minnesota

Southeast Corner of Sec. 5 Township 31 Range 24

CORNER HISTORY:

April 10, 1943 - H. A. Cartwright found 6" X 6" granite monument down 10" in centerline of Main Street. Established ties to monument.

August 16, 1960 - Found granite monument down 2'. Set cast iron monument flush and updated ties.

June 29, 1964 - Found cast iron monument flush with surface and updated ties.

July 14, 1966 - Found cast iron monument flush with surface and updated ties.

July 23, 1970 - Found cast iron monument flush and updated ties. Set P.K. nails 2.00' North and East.

July 19, 1974 - Found cast iron monument and updated ties.

June 17, 1977 - Found cast iron monument and updated ties.

June 25, 1980 - Found cast iron monument and updated ties.

July 25, 1983 - Found cast iron monument and updated ties.

December 15, 1983 - Found cast iron monument and updated ties.

June 24, 1984 - Found cast iron monument and updated ties.

June 24, 1991 - Found cast iron monument and updated ties.

August 8, 1994 - Found cast iron monument and updated ties.

March 10, 2000 - Set construction ties. Cast iron monument to be removed prior to road construction.

November 7, 2000 - Set cast iron monument after road construction using construction ties. Updated ties.

September 28, 2001 - Found cast iron monument and established NAD 1983 (1996 Adjustment) Anoka County Project Coordinates by Static GPS methods.

March 18, 2010 - Found cast iron monument and updated ties.

April 29, 2015 - Found cast iron monument. Verified position by VRS GPS methods. Updated ties.

January 23, 2020 - Found cast iron monument. Verified position by VRS GPS methods. Updated ties.

August 3, 2022 - Found cast iron monument. Verified position by VRS GPS methods. Updated ties.