

CERTIFICATE OF LOCATION OF GOVERNMENT CORNER

County of Anoka

State of Minnesota

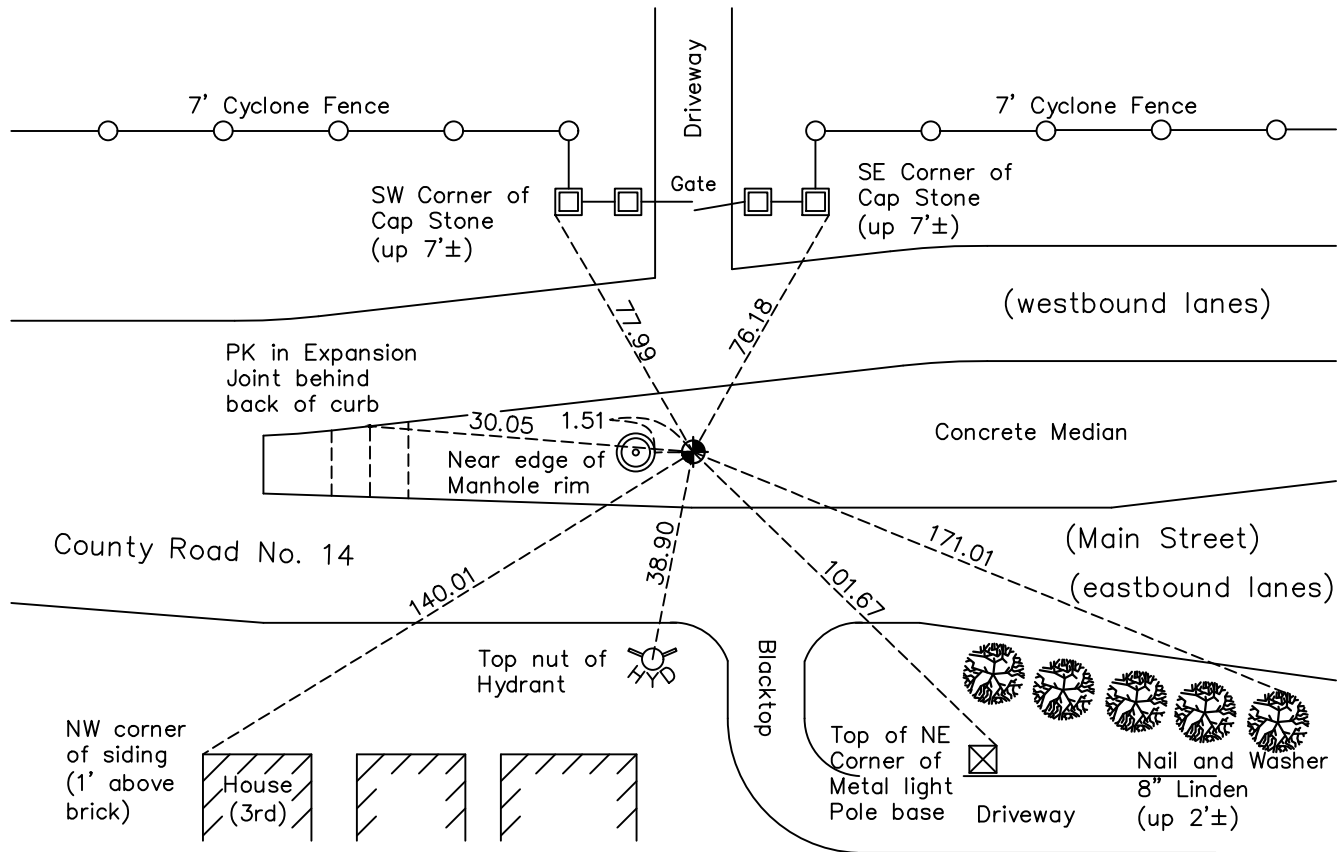
Southwest Corner of Sec. 5 Township 31 Range 24

On the 13th day of October, 1960, the described corner was evidenced by a P.K. nail

and to perpetuate the location of said corner, at the exact location thereof, a permanent marker was placed consisting of a cast iron monument

AND on the 18th day of July, 2022, said permanent marker was found flush and the ties were updated.

Updated reference ties are as shown below.



Revision Date
12/08/2022

N.A.D. 1983 Coordinates
(1996 Adjustment)

County Project Coordinates	
Northing	<u>159164.6548</u>
Easting	<u>473815.1890</u>
Date	<u>9/13/01</u>

I hereby certify that this United States public land survey monument record is correct and complete to the best of my knowledge and belief.

David Zieglmeier Date 2/8/23

David Zieglmeier Anoka County Surveyor
Minnesota License Number 46179

HISTORY OF GOVERNMENT CORNER

Page No. 37

County of Anoka

State of Minnesota

Southwest Corner of Sec. 5 Township 31 Range 24

CORNER HISTORY:

April 10, 1943 - H.A. Cartwright found granite monument down 6" in Main Street. Established ties to monument.

October 13, 1960 - Replaced P.K. nail found with a cast iron monument set flush with the surface. Updated ties.

June 29, 1964 - Found cast iron monument and updated ties.

July 20, 1966 - Found cast iron monument and updated ties.

July 23, 1970 - Found cast iron monument and updated ties. Set P.K. nails 2.00' North and East.

July 19, 1974 - Found cast iron monument and updated ties.

May 4, 1977 - Set new cast iron monument and updated ties.

June 17, 1977 - Found cast iron monument and updated ties.

June 26, 1980 - Found cast iron monument and updated ties.

July 6, 1987 - Set construction ties and removed cast iron monument prior to road construction.

October 21, 1987 - Set cast iron monument flush with surface after road construction using construction ties. Monument is 4'± South of centerline. Updated ties.

September 8, 1989 - Set construction (P.K. nail transit) ties prior to road construction.

September 10, 1990 - Set 1/2" iron pipe in concrete median after road construction using construction ties. Updated ties.

August 27, 1992 - Found 1/2" iron pipe in concrete median and updated ties.

August 9, 1994 - Found 1/2" iron pipe in concrete median and updated ties.

September 13, 2001 - Found 1/2" iron pipe in concrete median and established NAD 1983 (1996 Adjustment) Anoka County Project Coordinates by Static GPS methods. Updated ties.

March 25, 2010 - Found 1/2" iron pipe in concrete median and updated ties.

April 29, 2015 - Found 1/2" iron pipe down 0.15' and raised flush. Verified position by VRS GPS methods. Updated ties.

November 17, 2017 - Found 1/2" iron pipe and replaced with a cast iron monument flush using static GPS methods. Verified position by VRS GPS methods. Updated ties.

January 23, 2020 - Found cast iron monument flush. Verified position by VRS GPS methods. Updated ties.

July 18, 2022 - Found cast iron monument flush. Verified position by VRS GPS method. Updated ties.