

# CERTIFICATE OF LOCATION OF GOVERNMENT CORNER

County of Anoka

State of Minnesota

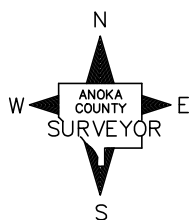
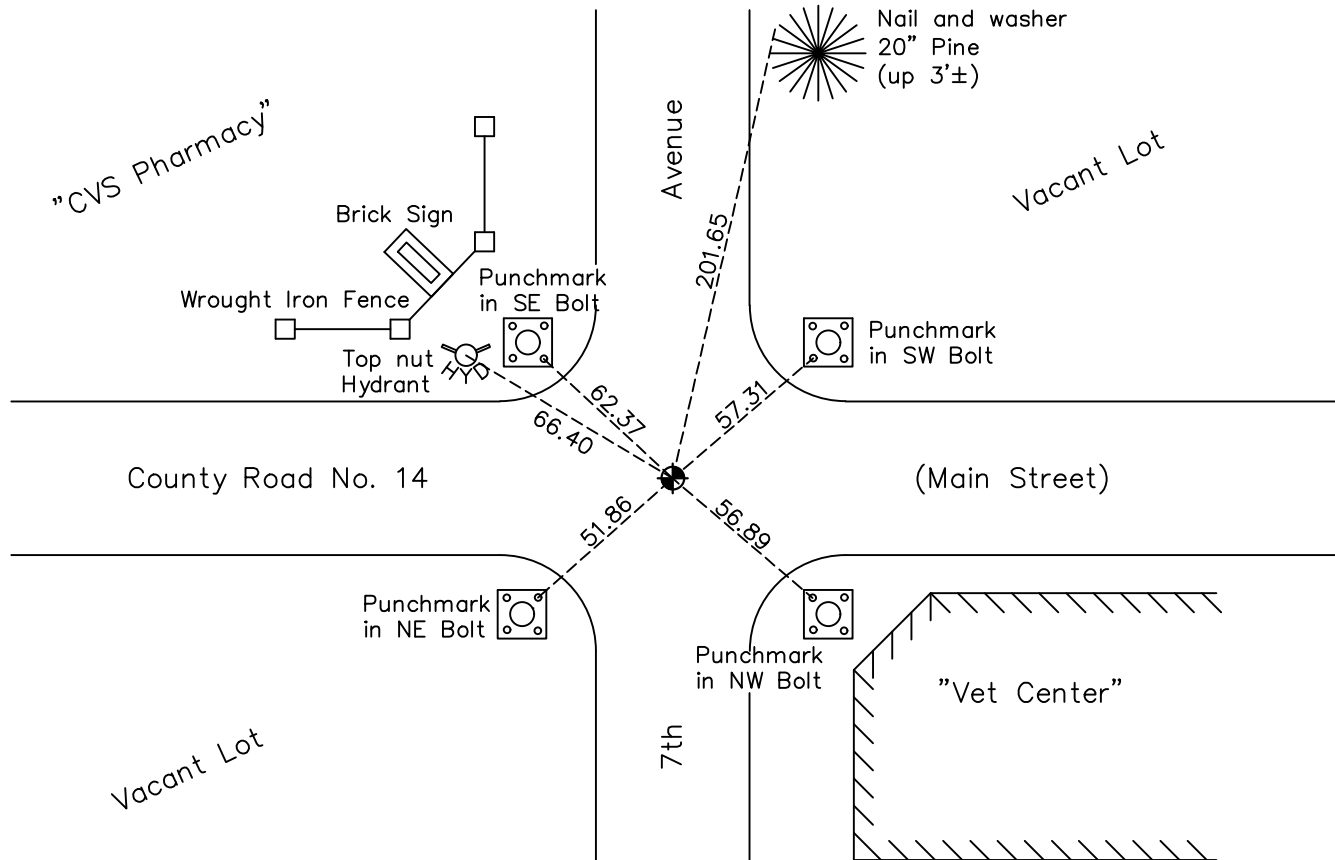
## South 1/4 Corner of Sec. 6 Township 31 Range 24

On the 2nd day of August, 1984, the described corner was evidenced by a P.K. nail

and to perpetuate the location of said corner, at the exact location thereof, a permanent marker was placed consisting of a cast iron monument

AND on the 1st day of August, 2022, said permanent marker was found flush and the ties were updated

Updated reference ties are as shown below.



Revision Date  
 12/08/2022

N.A.D. 1983 Coordinates  
 (1996 Adjustment)

County Project Coordinates	
Northing	159249.6020
Easting	471162.3803
Date	11/02/01

I hereby certify that this United States public land survey monument record is correct and complete to the best of my knowledge and belief.  
*David Zieglmeier* Date 2/8/23  
 David Zieglmeier Anoka County Surveyor  
 Minnesota License Number 46179

# HISTORY OF GOVERNMENT CORNER

Page No. 38

County of Anoka

State of Minnesota

South 1/4 Corner of Sec. 6 Township 31 Range 24

## **CORNER HISTORY:**

May 10, 1963 - Set P.K. nail using area resurvey. Established ties to monument.

July 27, 1966 - Found P.K. nail and updated ties.

July 19, 1974 - Found P.K. nail and updated ties.

June 20, 1977 - Found P.K. nail and updated ties. Set P.K. nails 2.00' south and east.

August 2, 1984 - Replaced P.K. nail with a cast iron monument and updated ties.

July 6, 1987 - Set construction ties and removed monument (type unknown) prior to road construction.

October 13, 1987 - Set cast iron monument flush with surface after road construction using construction ties. Updated ties and set P.K. nails 2.00' North and East.

June 25, 1991 - Found cast iron monument and updated ties.

August 19, 1994 - Found cast iron monument and updated ties.

November 2, 2001 - Found cast iron monument and established NAD 1983 (1996 Adjustment) Anoka County Project Coordinates by Static GPS methods.

March 30, 2010 - Found cast iron monument and updated ties.

October 24, 2012 - Added spacer/s and replaced top of cast iron monument after overlay of road surface. Monument is flush with surface. Updated ties.

May 4, 2015 - Found cast iron monument flush. Verified position by VRS GPS methods. Updated ties.

February 26, 2020 - Found cast iron monument flush. Verified position by VRS GPS methods. Updated ties.

August 1, 2022 - Found cast iron monument flush. Verified position by VRS GPS method. Updated ties.