

# CERTIFICATE OF LOCATION OF GOVERNMENT CORNER

County of Anoka

State of Minnesota

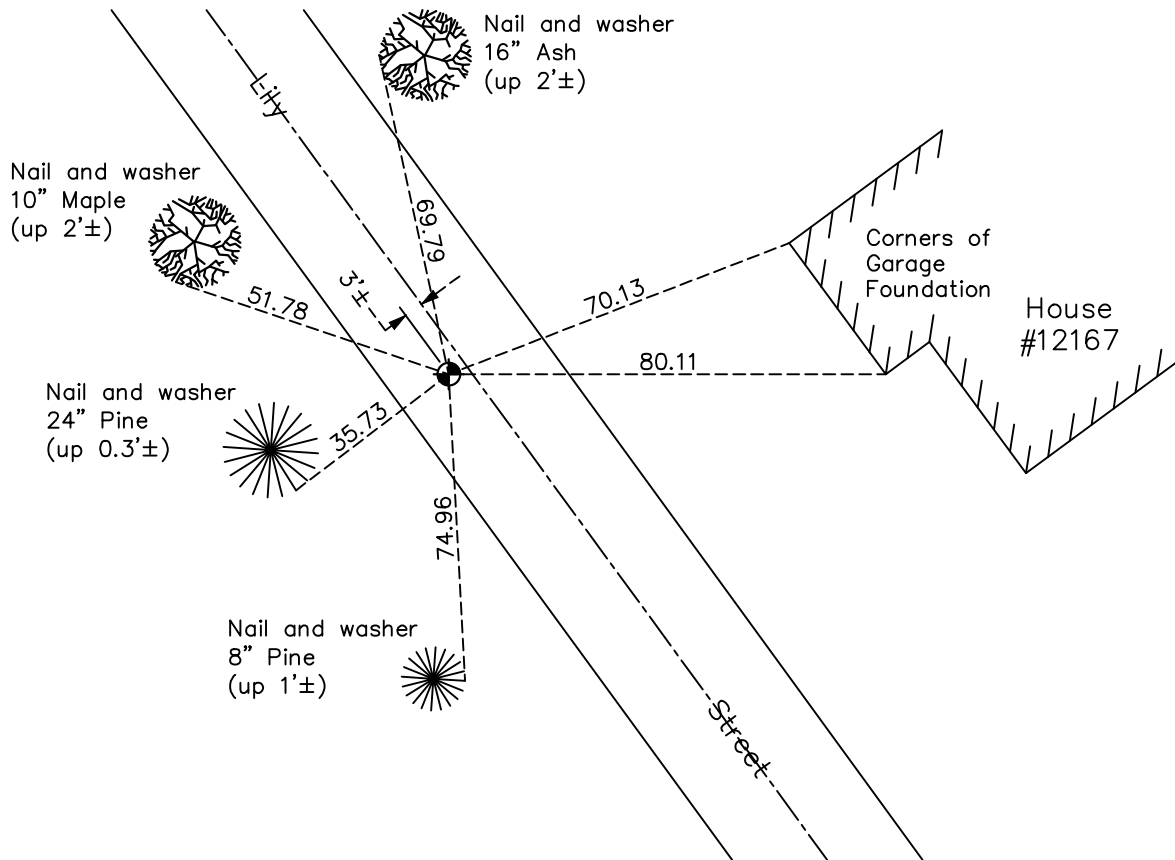
## West 1/4 Corner of Sec. 9 Township 31 Range 24

On the 5th day of July, 1974, the described corner was evidenced by a concrete monument

and to perpetuate the location of said corner, at the exact location thereof, a permanent marker was placed consisting of a cast iron monument

AND on the 28th day of June, 2022, said permanent marker was found flush and the ties were updated

Updated reference ties are as shown below.



Revision Date

12/08/2022

N.A.D. 1983 Coordinates  
(1996 Adjustment)

County Project Coordinates	
Northing	<u>156534.8752</u>
Easting	<u>479048.3178</u>
Date	<u>8/14/01</u>

I hereby certify that this United States public land survey monument record is correct and complete to the best of my knowledge and belief.

David Zieglmeier Date 2/8/23

David Zieglmeier Anoka County Surveyor  
Minnesota License Number 46179

# HISTORY OF GOVERNMENT CORNER

Page No. 40

County of Anoka

State of Minnesota

## West 1/4 Corner of Sec. 9 Township 31 Range 24

### **CORNER HISTORY:**

May 26, 1944 - H.A. Cartwright found concrete monument down 1'. Established ties to monument.

August 12, 1960 - Found concrete monument flush with surface and updated ties.

June 16, 1964 - Found concrete monument flush with surface and an iron pipe on North side. Updated ties.

July 14, 1966 - Found concrete monument flush with surface and iron pipe on North side. Updated ties.

July 23, 1970 - Found concrete monument flush with surface and iron pipe on North side. Updated ties.

July 5, 1974 - Replaced concrete monument with a cast iron monument flush. Set warning sign 1'± north. Updated ties.

June 20, 1977 - Found cast iron monument and updated ties.

July 21, 1980 - Found cast iron monument and updated ties.

June 20, 1986 - Found cast iron monument and updated ties.

October 21, 1987 - Updated ties and removed cast iron monument prior to road construction.

September 19, 1988 - Set cast iron monument flush with surface after road construction using updated ties.

August 20, 1990 - Found cast iron monument and updated ties.

August 12, 1994 - Found cast iron monument and updated ties.

August 14, 2001 - Found cast iron monument and established NAD 1983 (1996 Adjustment) Anoka County Project Coordinates by Static GPS methods.

February 18, 2010 - Found cast iron monument flush and updated ties.

April 17, 2015 - Found cast iron monument flush. Verified position by VRS GPS methods. Updated ties.

February 18, 2020 - Found cast iron monument flush. Verified position by VRS GPS methods. Updated ties.

June 28, 2022 - Found cast iron monument flush. Verified position by VRS GPS method. Updated ties.