

CERTIFICATE OF LOCATION OF GOVERNMENT CORNER

County of Anoka

State of Minnesota

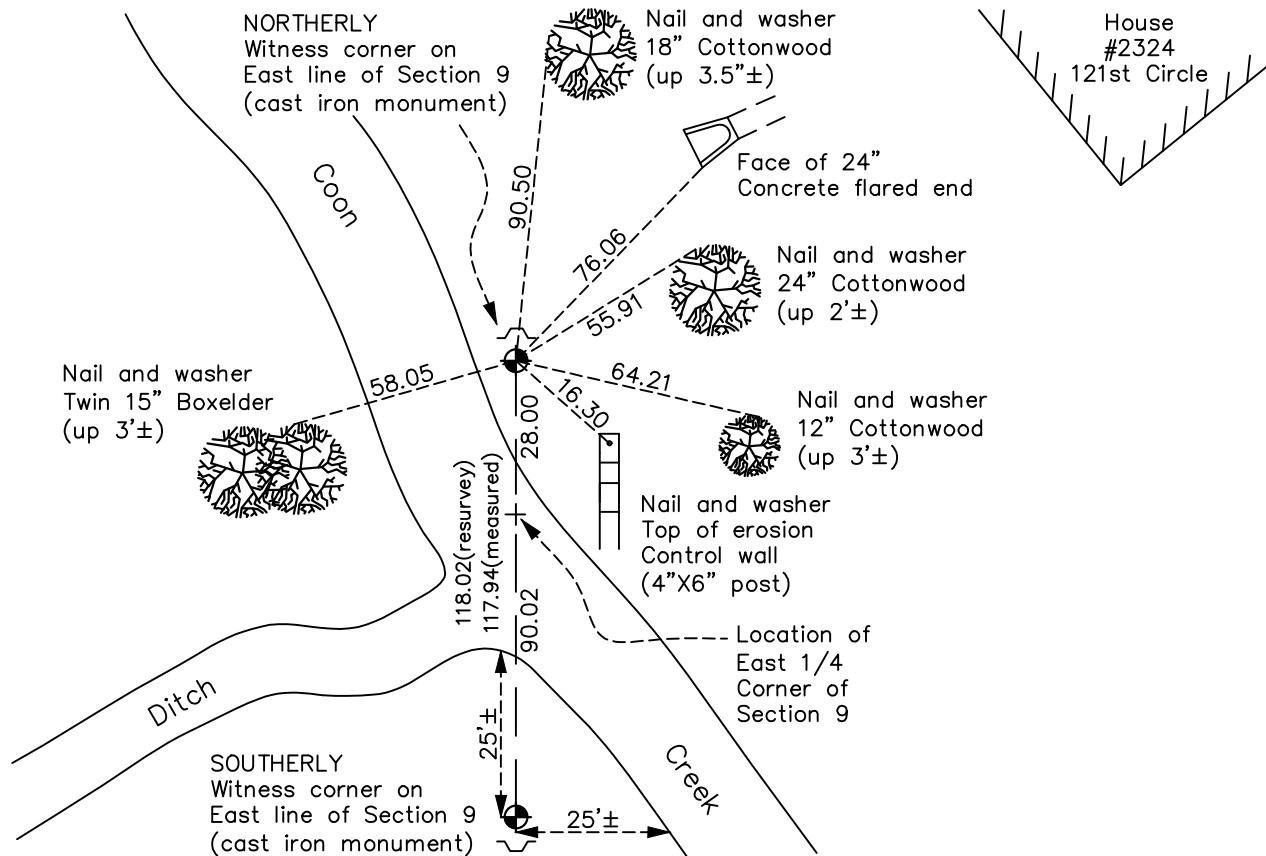
Witness Corner of Sec. 9 Township 31 Range 24
(Northerly witness cor. on E. line of section)

On the 29 day of July, 1970, the described corner was evidenced by area resurvey

and to perpetuate the location of said corner, at the exact location thereof, a permanent marker was placed consisting of a cast iron monument

AND on the 26th day of July, 2022, said permanent marker was found flush (North Witness corner CIM) with sign and post on the north side and the ties were updated

Updated reference ties are as shown below.



N.A.D. 1983 Coordinates
(1996 Adjustment)

County Project Coordinates	
Northing	156568.6117
Easting	484326.3288
Date	9/13/01

Revision Date
12/08/2022

I hereby certify that this United States public land survey monument record is correct and complete to the best of my knowledge and belief.
David Zieglmeier Date 2/8/23
 David Zieglmeier Anoka County Surveyor
 Minnesota License Number 46179

HISTORY OF GOVERNMENT CORNER

Page No. 41A

County of Anoka

State of Minnesota

Witness Corner of Sec. 9 Township 31 Range 24
(Northerly witness cor. on E. line of section)

CORNER HISTORY:

July 10, 1969 - Set 1" iron pipe at East Quarter corner of Section 9 up 0.5'± and 2'± into Coon Creek using area resurvey. Established ties to monument.

July 29, 1970 - Set cast iron monuments for Witness corners using area resurvey and established ties to northerly monument.

September 17, 1974 - Set red and white iron pipe at East Quarter corner of Section 9 up 3'± in Coon Creek. Updated ties to northerly Witness corner.

June 20, 1977 - Set sign and post 1.0'± north of northerly Witness corner monument. Updated ties to northerly monument.

July 25, 1983 - Found cast iron monuments and updated ties.

June 18, 1986 - Found cast iron monuments and updated ties.

July 26, 1991 - Found cast iron monuments and updated ties.

August 22, 1994 - Found cast iron monuments and updated ties.

September 13, 2001 - Found cast iron monuments and established NAD 1983 (1996 Adjustment) Anoka County Project Coordinates by Static GPS methods on northerly monument. Updated ties.

March 29, 2010 - Found cast iron monuments and updated ties.

November 19, 2012 - Found 2" iron pipe laying down in creek and removed it. Found and verified location of both witness corner cast iron monuments by Static GPS methods.

November 28, 2012 - Reset both northerly and southerly witness corners to more accurately fit resurvey. Moved northerly witness corner north 0.03' and east 0.12' to fit previous Static GPS position. Moved southerly witness corner west 0.18' to a point on line between the calculated position of East 1/4 corner and Southeast corner of Section 9.

May 29, 2015 - Found Northerly cast iron monument. Verified position by VRS GPS methods. Updated ties.

February 27, 2020 - Found Northerly cast iron monument. Verified position by VRS GPS methods. Updated ties.

July 26, 2022 - Found Northerly cast iron monument. Verified position by VRS GPS method. Updated ties.