

CERTIFICATE OF LOCATION OF GOVERNMENT CORNER

County of Anoka

State of Minnesota

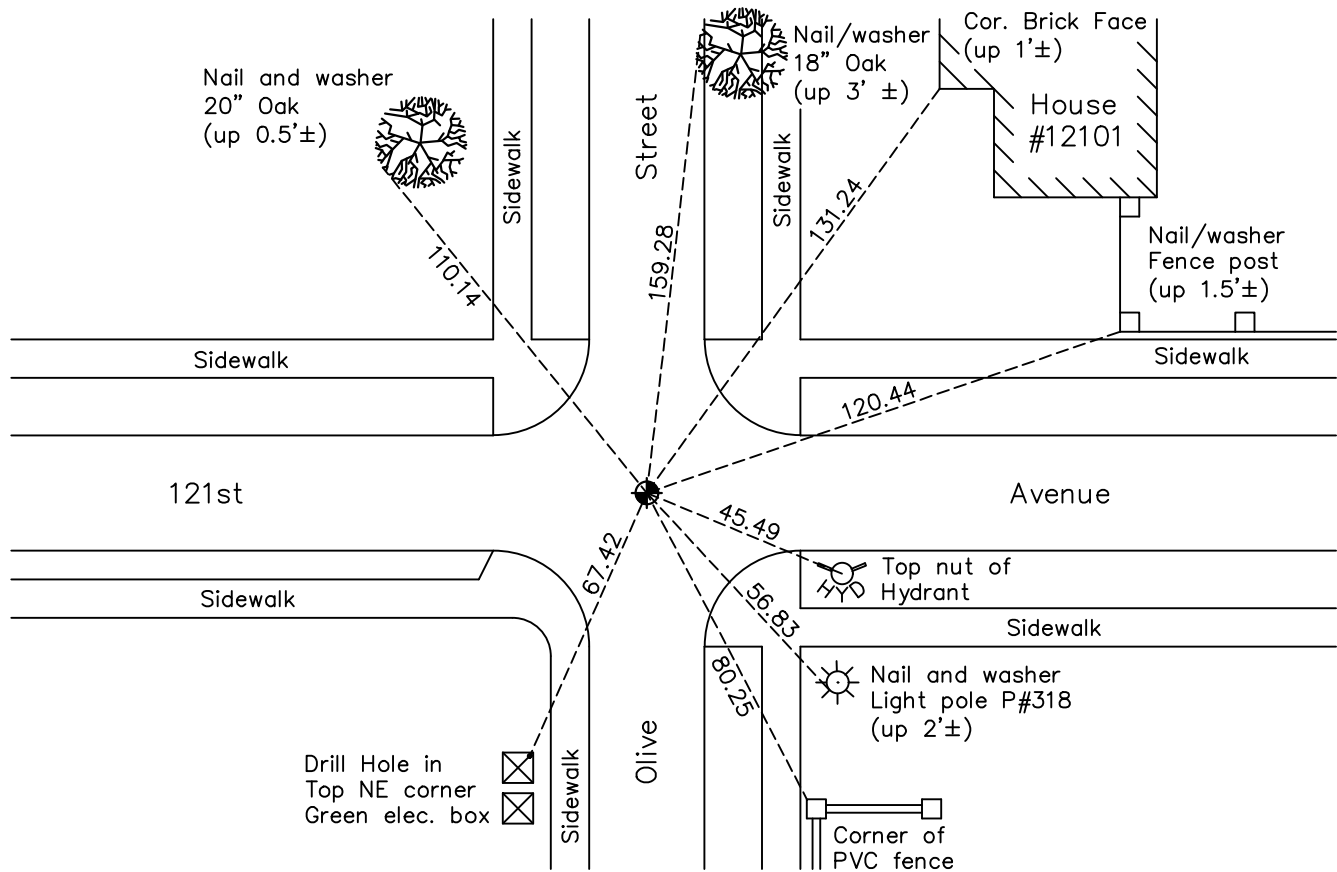
East 1/4 Corner of Sec. 11 Township 31 Range 24

On the 18th day of August, 1967, the described corner was evidenced by a 1/2" Iron Pipe set after road construction

and to perpetuate the location of said corner, at the exact location thereof, a permanent marker was placed consisting of a cast iron monument

AND on the 12th day of July, 2022, said permanent marker was found flush with surface and the ties were updated

Updated reference ties are as shown below.



Revision Date
12/08/2022

N.A.D. 1983 Coordinates
(1996 Adjustment)

County Project Coordinates	
Northing	<u>156261.7682</u>
Easting	<u>494839.4034</u>
Date	<u>8/02/01</u>

I hereby certify that this United States public land survey monument record is correct and complete to the best of my knowledge and belief.

David Zieglmeier Date 2/8/23

David Zieglmeier Anoka County Surveyor
Minnesota License Number 46179

HISTORY OF GOVERNMENT CORNER

Page No. 44

County of Anoka

State of Minnesota

East 1/4 Corner of Sec. 11 Township 31 Range 24

CORNER HISTORY:

November 26, 1943 - H.A. Cartwright found concrete monument flush. Established ties to monument.

July 1955 - Minder Engineering Company found concrete monument and updated ties.

July 22, 1960 - Found concrete monument flush with an iron pipe on the North side. Updated ties.

June 5, 1964 - Found concrete monument flush with an iron pipe on the North side. Updated ties.

June 1, 1965 - Found concrete monument flush with an iron pipe on the North side. Added additional ties prior to road construction.

September 12, 1966 - Set 1/2" iron pipe flush with surface after road construction using ties.

August 18, 1967 - Replaced 1/2" iron pipe with a cast iron monument. Updated ties.

July 24, 1970 - Found cast iron monument and updated ties.

July 8, 1974 - Found cast iron monument and updated ties.

June 20, 1977 - Found cast iron monument and updated ties.

October 29, 1978 - Found cast iron monument missing. Reset position of corner with P.K. nail using ties.

October 30, 1978 - Replaced P.K. nail with a cast iron monument before blacktop construction set flush with the surface. Updated ties.

July 7, 1980 - Set P.K. nail in position of corner using ties.

December 30, 1981 - Found cast iron monument missing. Reset position of corner with P.K. nail using one tie and a traverse to the north and south. Updated ties.

August 19, 1983 - Replaced P.K.nail with a cast iron monument and set P.K. nails 2.00' south and east. Updated ties.

August 13, 1990 - Found cast iron monument and updated ties.

August 8, 1994 - Found cast iron monument and updated ties.

August 2, 2001 - Found cast iron monument and established NAD 1983 (1996 Adjustment) Anoka County Project Coordinates by Static GPS methods. Updated ties.

September 19, 2005 - Found cast iron monument and updated ties.

February 17, 2010 - Found cast iron monument flush and updated ties.

April 16, 2015 - Found cast iron monument flush. Verified position by VRS GPS methods. Updated ties.

June 18, 2019 - Found cast iron monument and removed prior to road construction.

HISTORY OF GOVERNMENT CORNER

County of Anoka

State of Minnesota

Page No. 44

History Page 2

East 1/4 Corner of Sec. 11 Township 31 Range 24

CORNER HISTORY:

April 2, 2020 - Set 1' long section of a cast iron monument flush after road construction using static GPS methods. Updated ties.

July 12, 2022 - Found cast iron monument flush, verified position by VRS GPS method and updated ties.