

CERTIFICATE OF LOCATION OF GOVERNMENT CORNER

County of Anoka

State of Minnesota

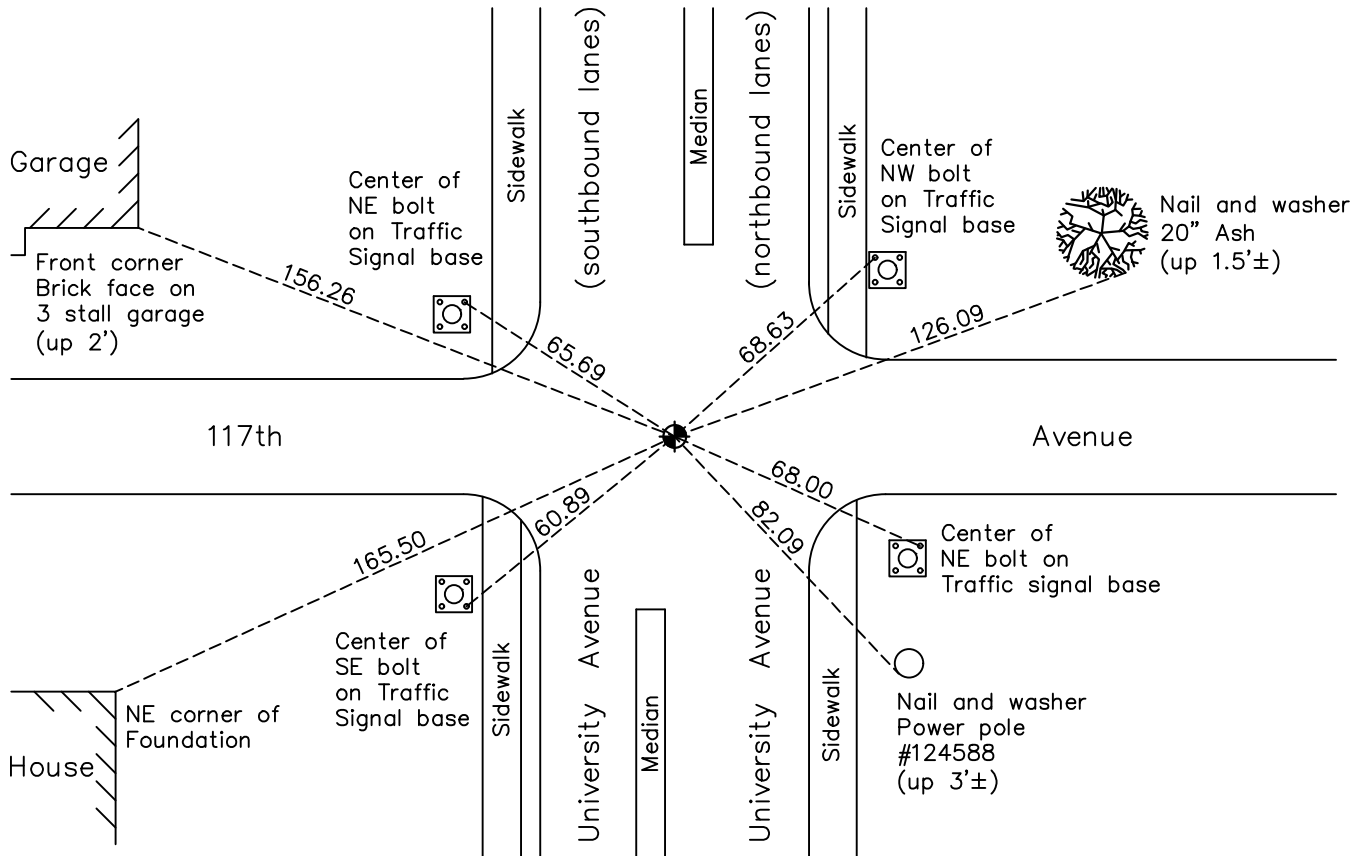
Southeast Corner of Sec. 12 Township 31 Range 24

On the 5th day of July, 1960, the described corner was evidenced by a concrete monument

and to perpetuate the location of said corner, at the exact location thereof, a permanent marker was placed consisting of a cast iron monument set above broken off concrete monument

AND on the 12th day of July, 2022, said permanent marker was found flush and the ties were updated

Updated reference ties are as shown below.



Revision Date
12/08/2022

N.A.D. 1983 Coordinates
(1996 Adjustment)

County Project Coordinates	
Northing	<u>153679.2612</u>
Easting	<u>500143.1420</u>
Date	<u>10/12/98</u>

I hereby certify that this United States public land survey monument record is correct and complete to the best of my knowledge and belief.

David Zieglmeier Date 2/8/23

David Zieglmeier Anoka County Surveyor
Minnesota License Number 46179

HISTORY OF GOVERNMENT CORNER

Page No. 46

County of Anoka

State of Minnesota

Southeast Corner of Sec. 12 Township 31 Range 24

CORNER HISTORY:

April 1, 1944 - H.A. Cartwright found concrete monument down 0.4'±. Established ties to monument.

September 1954 - Harold Wilke found concrete monument and updated ties.

July 1955 - Minder Engineering Company found concrete monument down 1.5'± with an iron pipe on the south side. Set iron pipe on top of monument and updated ties.

July 5, 1960 - Found iron pipe and removed to uncover broken off concrete monument with a pinched iron pipe on the south side. Set cast iron monument on top of concrete monument and updated ties.

June 17, 1964 - Found cast iron monument and updated ties.

July 11, 1966 - Found cast iron monument flush with the surface and updated ties.

July 24, 1970 - Found cast iron monument and updated ties.

May 9, 1973 - Found cast iron monument and set construction ties prior to road construction.

July 9, 1974 - Replaced broken cast iron monument with a new cast iron monument over the concrete monument below. Updated ties.

June 20, 1977 - Found cast iron monument and updated ties.

July 27, 1978 - Found cast iron monument and updated ties.

September 25, 1978 - Raised cast iron monument and set P.K. nails 2.00' north and east. Updated ties.

June 30, 1980 - Found cast iron monument and updated ties.

June 18, 1986 - Found cast iron monument and updated ties.

August 3, 1994 - Found cast iron monument and updated ties.

October 12, 1998 - Found cast iron monument and established NAD 1983 (1996 Adjustment) Anoka County Project Coordinates by Static GPS methods.

March 22, 2010 - Found cast iron monument and updated ties.

October 6, 2014 - Set construction ties and updated corner ties prior to road construction. Removed monument.

June 28, 2016 - Set cast iron monument after road construction using construction ties and verified location of corner by Static GPS methods. Updated ties.

January 24, 2020 - Found cast iron monument flush. Verified position by VRS GPS methods. Updated ties.

July 12, 2022 - Found cast iron monument flush. Verified position by VRS GPS method. Updated ties.