

# CERTIFICATE OF LOCATION OF GOVERNMENT CORNER

County of Anoka

State of Minnesota

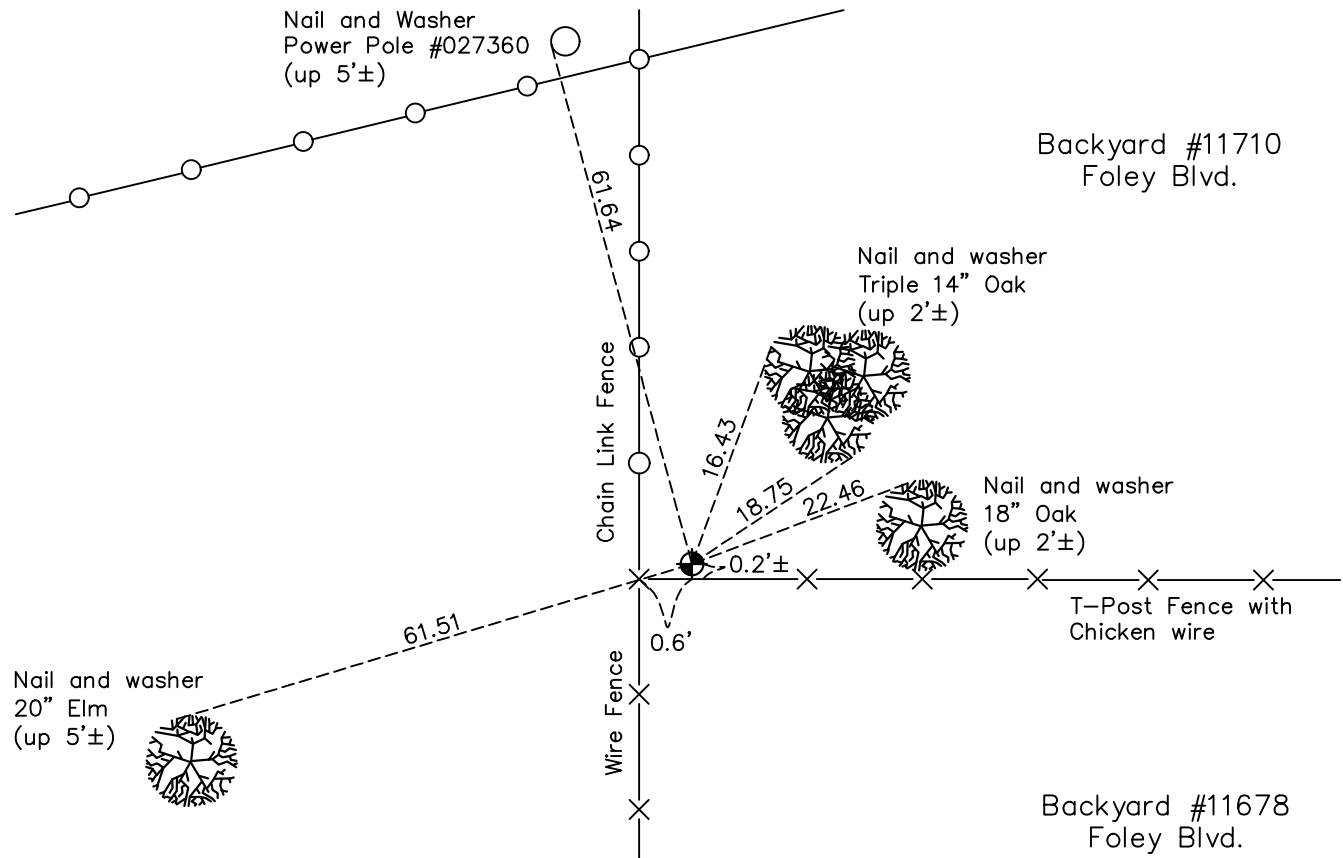
## South 1/4 Corner of Sec. 12 Township 31 Range 24

On the 20th day of June, 1977, the described corner was evidenced by an iron pipe

and to perpetuate the location of said corner, at the exact location thereof, a permanent marker was placed consisting of a cast iron monument

AND on the 27th day of July, 2022, said permanent marker was found down 0.4'± and the ties were updated

Updated reference ties are as shown below.



Revision Date  
 12/14/2022

N.A.D. 1983 Coordinates  
 (1996 Adjustment)

County Project Coordinates	
Northing	153665.8118
Easting	497459.9540
Date	8/08/01

I hereby certify that this United States public land survey monument record is correct and complete to the best of my knowledge and belief.

*David Zieglmeier* Date 2/8/23

David Zieglmeier Anoka County Surveyor  
 Minnesota License Number 46179

# HISTORY OF GOVERNMENT CORNER

Page No. 47

County of Anoka

State of Minnesota

## South 1/4 Corner of Sec. 12 Township 31 Range 24

### **CORNER HISTORY:**

April 1, 1944 - H.A. Cartwright found concrete monument set flush with the surface. Established ties to monument.

July 1957 - Found concrete monument and updated ties.

February 18, 1960 - Found open iron pipe set in concrete up 1'±. Updated ties.

April 23, 1963 - Found iron pipe set in concrete with an iron pipe on west side. Updated ties.

July 27, 1965 - Found iron pipe set in concrete with an iron pipe on west side. Updated ties.

July 12, 1966 - Found iron pipe set in concrete with an iron pipe on west side. Updated ties.

July 27, 1970 - Found iron pipe set in concrete with an iron pipe on west side. Updated ties.

June 20, 1977 - Replaced iron pipe with a cast iron monument set flush with the surface. Updated ties.

July 9, 1980 - Found cast iron monument set flush with the surface and updated ties.

July 25, 1983 - Found cast iron monument and updated ties.

December 29, 1983 - Found cast iron monument and updated ties.

June 23, 1986 - Found cast iron monument and updated ties.

August 13, 1990 - Found cast iron monument and updated ties.

August 9, 1994 - Found cast iron monument and updated ties.

August 8, 2001 - Found cast iron monument and established NAD 1983 (1996 Adjustment) Anoka County Project Coordinates by Static GPS methods. Updated ties.

March 18, 2010 - Found cast iron monument and updated ties.

April 27, 2015 - Found cast iron monument and updated ties.

January 24, 2020 - Found cast iron monument down 0.4'±. Verified position by VRS GPS methods. Updated ties.

July 27, 2022 - Found cast iron monument down 0.4'±. Verified position by VRS GPS method. Updated ties.