

# CERTIFICATE OF LOCATION OF GOVERNMENT CORNER

County of Anoka

State of Minnesota

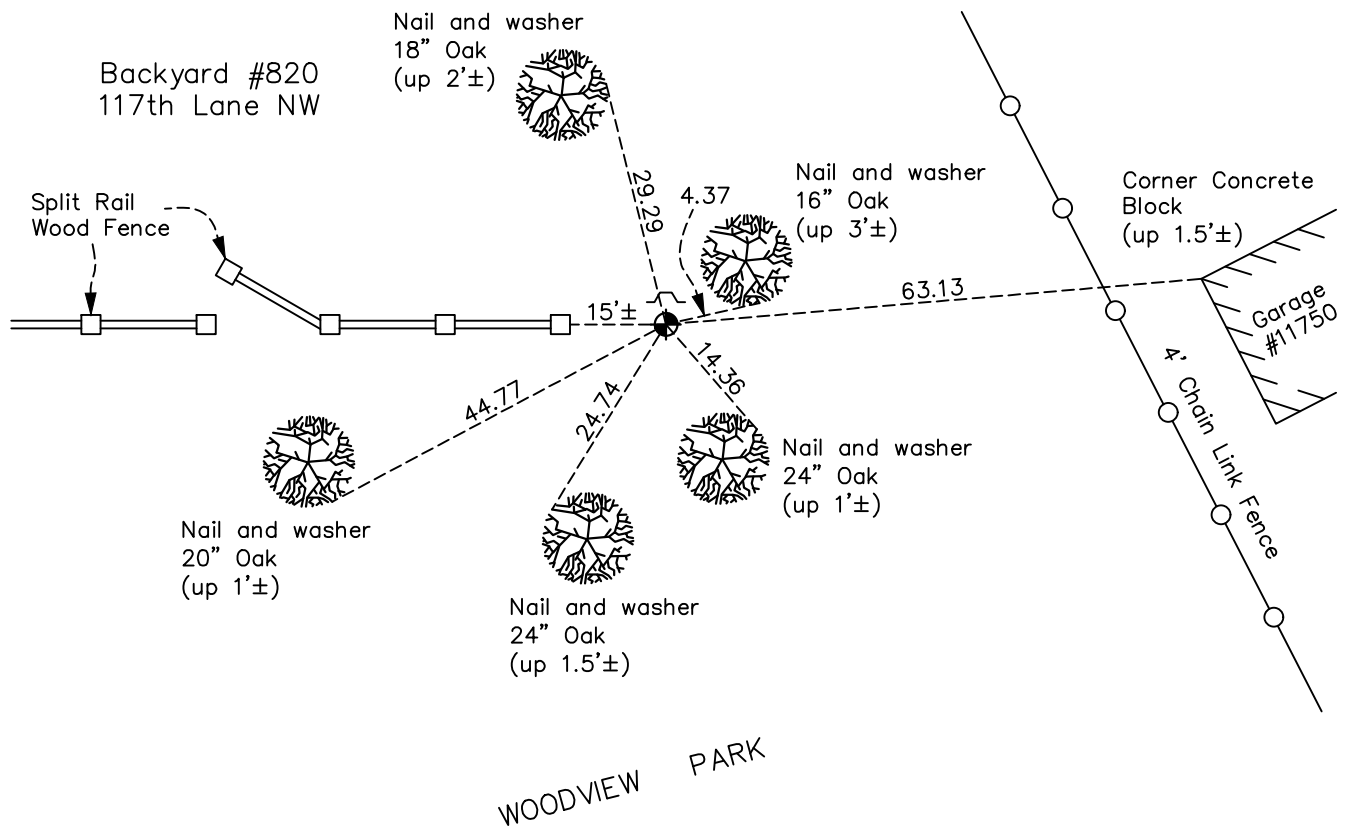
## Southwest Corner of Sec. 12 Township 31 Range 24

On the 11th day of July, 1974, the described corner was evidenced by a concrete monument

and to perpetuate the location of said corner, at the exact location thereof, a permanent marker was placed consisting of a cast iron monument

AND on the 29th day of June, 2022, said permanent marker was found down 0.3'± with a sign and post on the north side and the ties were updated

Updated reference ties are as shown below.



Revision Date  
 12/14/2022

N.A.D. 1983 Coordinates  
 (1996 Adjustment)

County Project Coordinates	
Northing	153610.0810
Easting	494802.3485
Date	10/22/01

I hereby certify that this United States public land survey monument record is correct and complete to the best of my knowledge and belief.  
*David Zieglmeier* Date 2/8/23  
 David Zieglmeier Anoka County Surveyor  
 Minnesota License Number 46179

# HISTORY OF GOVERNMENT CORNER

Page No. 48

County of Anoka

State of Minnesota

## Southwest Corner of Sec. 12 Township 31 Range 24

### **CORNER HISTORY:**

April 1, 1944 - H.A. Cartwright found concrete monument. Established ties to monument.

July 1955 - Minder Engineering Company found concrete monument and updated ties.

February 23, 1960 - Found concrete monument set flush with the surface and updated ties.

June 5, 1964 - Found concrete monument and updated ties.

July 11, 1966 - Found concrete monument and updated ties.

July 27, 1970 - Found concrete monument and updated ties.

July 11, 1974 - Replaced concrete monument with a cast iron monument set flush with the surface. Set warning sign and post 1'± west of monument and updated ties.

June 20, 1977 - Found cast iron monument and updated ties.

July 25, 1983 - Found cast iron monument and updated ties.

June 19, 1986 - Found cast iron monument and updated ties.

August 13, 1990 - Found cast iron monument and set sign and post on the north side. Updated ties.

August 11, 1994 - Found cast iron monument with sign and post on the north side and updated ties.

October 22, 2001 - Found cast iron monument and established NAD 1983 (1996 Adjustment) Anoka County Project Coordinates by Static GPS methods. Updated ties.

February 17, 2010 - Found cast iron monument down 0.6'± with sign and post on the north side. Updated ties.

April 27, 2015 - Found cast iron monument with sign and post on the north side and updated ties.

January 24, 2020 - Found cast iron monument down 0.6'± with a sign and post on the north side. Updated ties.

June 29, 2022 - Found cast iron monument down 0.3'±, verified position by VRS GPS method and Updated ties.