

CERTIFICATE OF LOCATION OF GOVERNMENT CORNER

County of Anoka

State of Minnesota

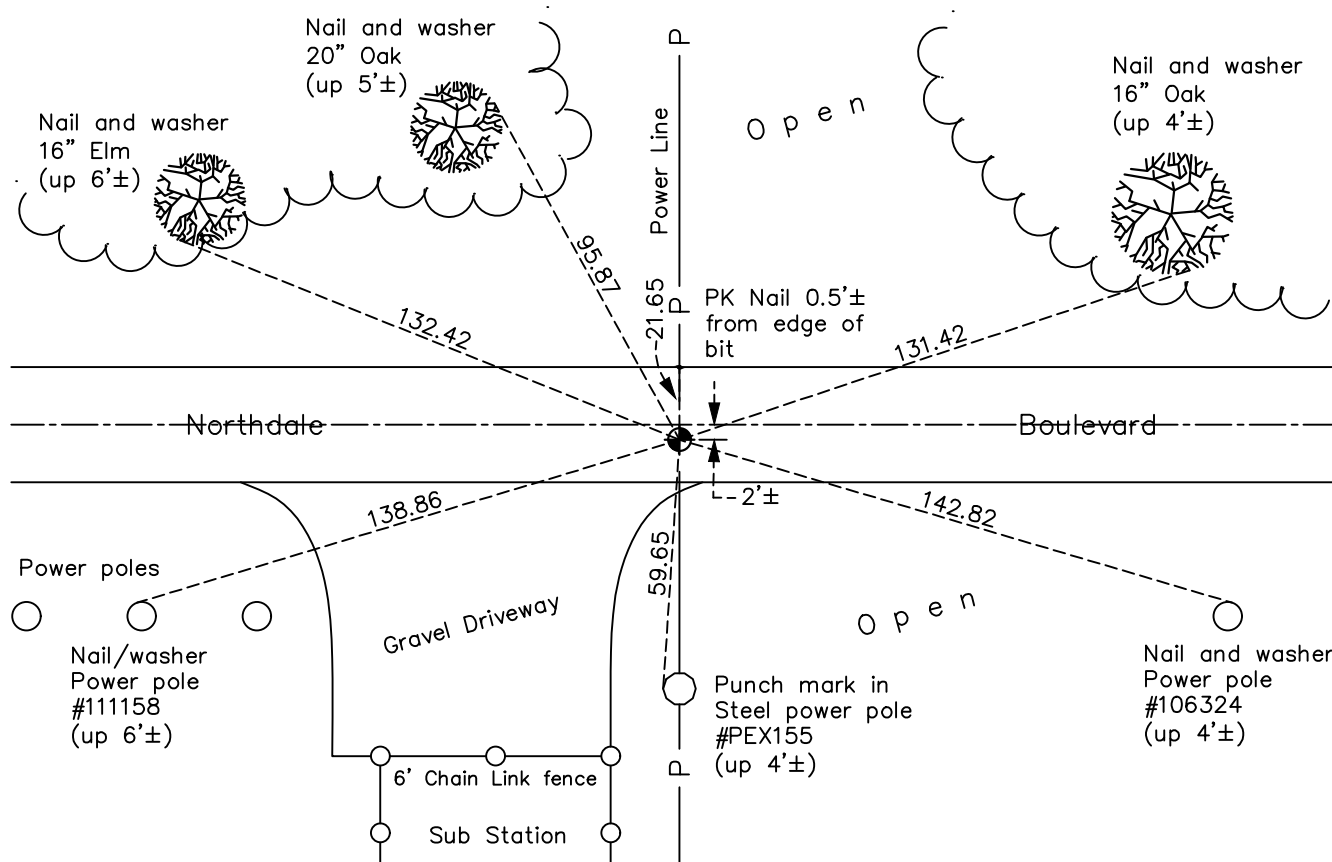
Southwest Corner of Sec. 11 Township 31 Range 24

On the 5th day of June, 1964, the described corner was evidenced by a concrete monument

and to perpetuate the location of said corner, at the exact location thereof, a permanent marker was placed consisting of a cast iron monument

AND on the 3rd day of August, 2022, said permanent marker was found flush and the ties were updated

Updated reference ties are as shown below.



Revision Date
 12/14/2022

N.A.D. 1983 Coordinates
 (1996 Adjustment)

County Project Coordinates	
Northing	153723.7169
Easting	489596.1393
Date	8/03/01

I hereby certify that this United States public land survey monument record is correct and complete to the best of my knowledge and belief.

David Zieglmeier Date 2/8/23

David Zieglmeier Anoka County Surveyor
 Minnesota License Number 46179

HISTORY OF GOVERNMENT CORNER

Page No. 50

County of Anoka

State of Minnesota

Southwest Corner of Sec. 11 Township 31 Range 24

CORNER HISTORY:

November 26, 1943 - H.A. Cartwright found concrete monument. Established ties to monument.

July 1957 - Minder Engineering Company found concrete monument and updated ties.

May 22, 1959 - Found concrete monument and updated ties.

June 5, 1964 - Found 4' iron pipe (down 0.6'±) 0.2'± north of concrete monument (down 2'±). Replaced iron pipe with a cast iron monument set flush with the surface. Updated ties.

July 13, 1966 - Found cast iron monument flush with the surface and updated ties.

June 22, 1970 - Found cast iron monument 2'± south of centerline and raised the monument to the surface. Set P.K. nails 2.00' north and east and updated ties.

July 8, 1974 - Found cast iron monument and updated ties.

June 21, 1977 - Found cast iron monument and updated ties.

July 22, 1983 - Found cast iron monument and updated ties.

June 13, 1986 - Found cast iron monument and updated ties.

August 11, 1994 - Found cast iron monument and updated ties.

August 3, 2001 - Found cast iron monument and established NAD 1983 (1996 Adjustment) Anoka County Project Coordinates by Static GPS methods. Updated ties.

March 16, 2010 - Found cast iron monument and updated ties.

April 20, 2015 - Found cast iron monument south of center line 2'±. Verified position by VRS GPS methods. Updated ties.

October 11, 2019 - Found cast iron monument, verified position by VRS GPS methods and updated corner ties prior to road construction. Removed monument.

April 21, 2020 - Set cast iron monument flush after road construction using static GPS methods. Updated ties.

August 3, 2022 - Found cast iron monument flush, verified position by VRS GPS method and updated ties.