

# CERTIFICATE OF LOCATION OF GOVERNMENT CORNER

County of Anoka

State of Minnesota

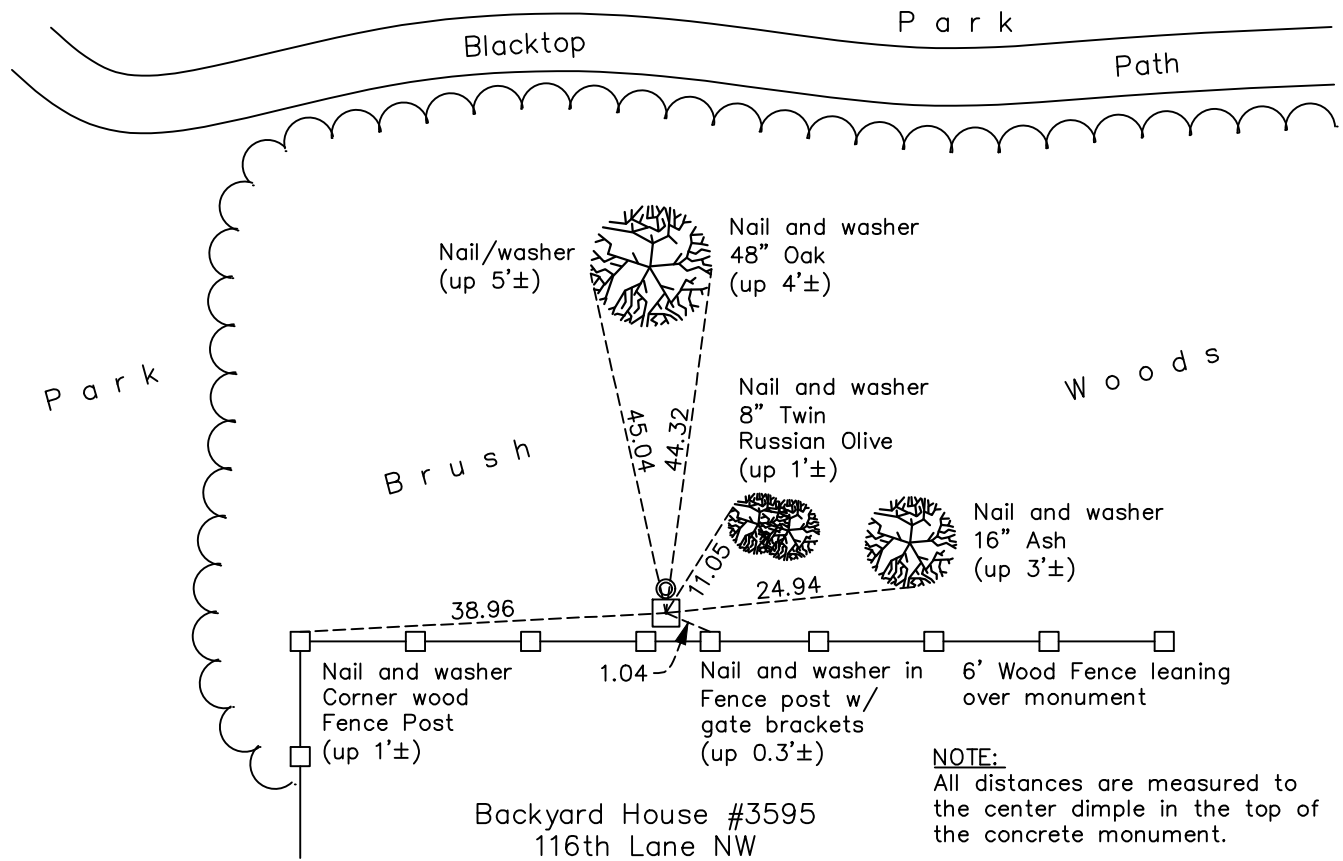
## North $\frac{1}{4}$ Corner of Sec. 17 Township 31 Range 24

On the 18th day of July, 1960, the described corner was evidenced by a concrete monument

and to perpetuate the location of said corner, at the exact location thereof, a permanent marker was placed consisting of the same concrete monument with an iron pipe on the north side

AND on the 8th day of July, 2022, said permanent marker was found down 0.3'± and the ties were updated

Updated reference ties are as shown below.



**NOTE:**  
All distances are measured to the center dimple in the top of the concrete monument.

N

S

Revision Date

12/14/2022

N.A.D. 1983 Coordinates  
(1996 Adjustment)

County Project Coordinates	
Northing	153905.7489
Easting	476398.6185
Date	11/01/01

I hereby certify that this United States public land survey monument record is correct and complete to the best of my knowledge and belief.

*David Zieglmeier* Date 2/28/23

David Zieglmeier Anoka County Surveyor  
Minnesota License Number 46179

# HISTORY OF GOVERNMENT CORNER

Page No. 55

County of Anoka

State of Minnesota

## North 1/4 Corner of Sec. 17 Township 31 Range 24

### **CORNER HISTORY:**

August 19, 1959 - C.H. Parker found 0.3' x 0.3' granite monument up 0.1'± with a drill hole in the center. Established ties to monument.

July 18, 1960 - Found concrete (granite) monument flush with the surface and 1'± north of old fence post with an iron pipe on the north side. Updated ties.

September 2, 1964 - Found concrete monument and updated ties.

July 27, 1966 - Found concrete monument and updated ties.

July 28, 1970 - Found concrete monument and updated ties.

July 8, 1974 - Found concrete monument and updated ties.

June 21, 1977 - Found concrete monument and updated ties.

July 10, 1980 - Found concrete monument and updated ties.

July 21, 1983 - Found concrete monument and updated ties.

August 19, 1994 - Found concrete monument and updated ties.

November 1, 2001 - Found concrete monument and established NAD 1983 (1996 Adjustment) Anoka County Project Coordinates by Static GPS methods. Updated ties.

February 18, 2010 - Found concrete monument down 0.8'± and updated ties.

April 17, 2015 - Found concrete monument down 0.8'± and updated ties.

February 26, 2020 - Found concrete monument down 0.8'± and updated ties.

May 12, 2020 - Found concrete monument down 0.8'± and updated ties.

July, 8, 2022 - Found concrete monument down 0.3'± and updated the ties.