

CERTIFICATE OF LOCATION OF GOVERNMENT CORNER

County of Anoka

State of Minnesota

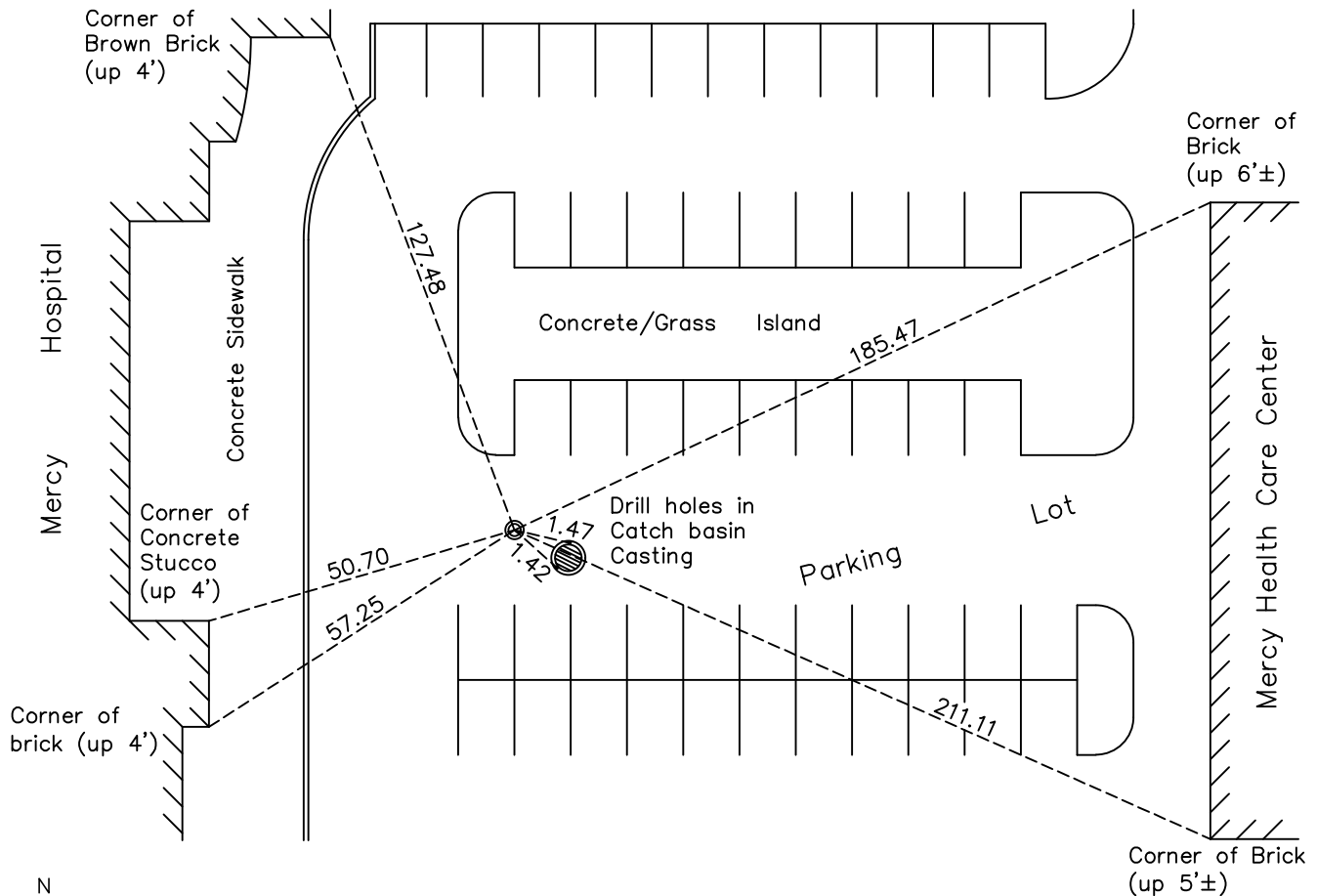
Southwest Corner of Sec. 8 Township 31 Range 24

On the 24th day of April, 2015, the described corner was evidenced by a cast iron monument last found January 22, 2002

and to perpetuate the location of said corner, at the exact location thereof, a permanent marker was placed consisting of a 1/2" iron pipe with "Anoka Co. Surveyor" cap

AND on the 21st day of July, 2022, said permanent marker was found flush in blacktop and the ties were updated

Updated reference ties are as shown below.



Revision Date
12/14/2022

N.A.D. 1983 Coordinates
(1996 Adjustment)

County Project Coordinates	
Northing	<u>153887.1230</u>
Easting	<u>473794.3298</u>
Date	<u>1/22/02</u>

I hereby certify that this United States public land survey monument record is correct and complete to the best of my knowledge and belief.

David Zieglmeier Date 2/28/23

David Zieglmeier Anoka County Surveyor
Minnesota License Number 46179

HISTORY OF GOVERNMENT CORNER

Page No. 56

County of Anoka

State of Minnesota

Southwest Corner of Sec. 8 Township 31 Range 24

CORNER HISTORY:

August 19, 1959 - C.H. Parker found 0.3' square concrete monument flush with the surface. Established ties to monument.

June 17, 1960 - Found concrete monument down 0.1'± and updated ties.

September 2, 1964 - Found concrete monument down 0.5'± and updated ties.

July 27, 1966 - Found concrete monument and updated ties.

July 28, 1970 - Found concrete monument and updated ties.

May 9, 1973 - All ties are gone and concrete monument appears to be missing.

May 22, 1973 - Found concrete monument undisturbed and down 1.5'± using area platting and updated ties.

June 14, 1974 - Set cast iron monument after construction using construction ties and updated ties.

June 21, 1977 - Found cast iron monument and updated ties.

June 30, 1980 - Found cast iron monument and updated ties.

November 21, 1983 - Set cast iron monument flush with the surface after construction and updated ties.

June 19, 1986 - Found cast iron monument and updated ties.

August 14, 1990 - Found cast iron monument and updated ties.

August 16, 1994 - Found cast iron monument and updated ties.

January 22, 2002 - Found cast iron monument and established NAD 1983 (1996 Adjustment) Anoka County project coordinates by static GPS methods. Updated ties.

January 31, 2011 - Found cast iron monument missing. Reset position of corner with a capped 1/2" iron pipe set in concrete pad using ties and verified position by static GPS methods. Updated ties.

April 17, 2015 - Concrete pad and 1/2" iron pipe were gone. Reset position of corner with temporary PK nail using the drill holes in manhole. Verified position with VRS GPS methods.

April 24, 2015 - Set new 1/2" x 16" Iron pipe with "Anoka Co. Surveyor" cap flush in blacktop using static GPS methods. Verified position by VRS GPS methods. Updated ties.

February 3, 2020 - Found 1/2" capped iron pipe. Verified position by VRS GPS methods. Updated ties.

July 21, 2022 - Found 1/2" capped iron pipe. Verified position by VRS GPS method. Updated ties.