

CERTIFICATE OF LOCATION OF GOVERNMENT CORNER

County of Anoka

State of Minnesota

Witness Corner of Sec. 17 Township 31 Range 24

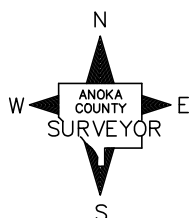
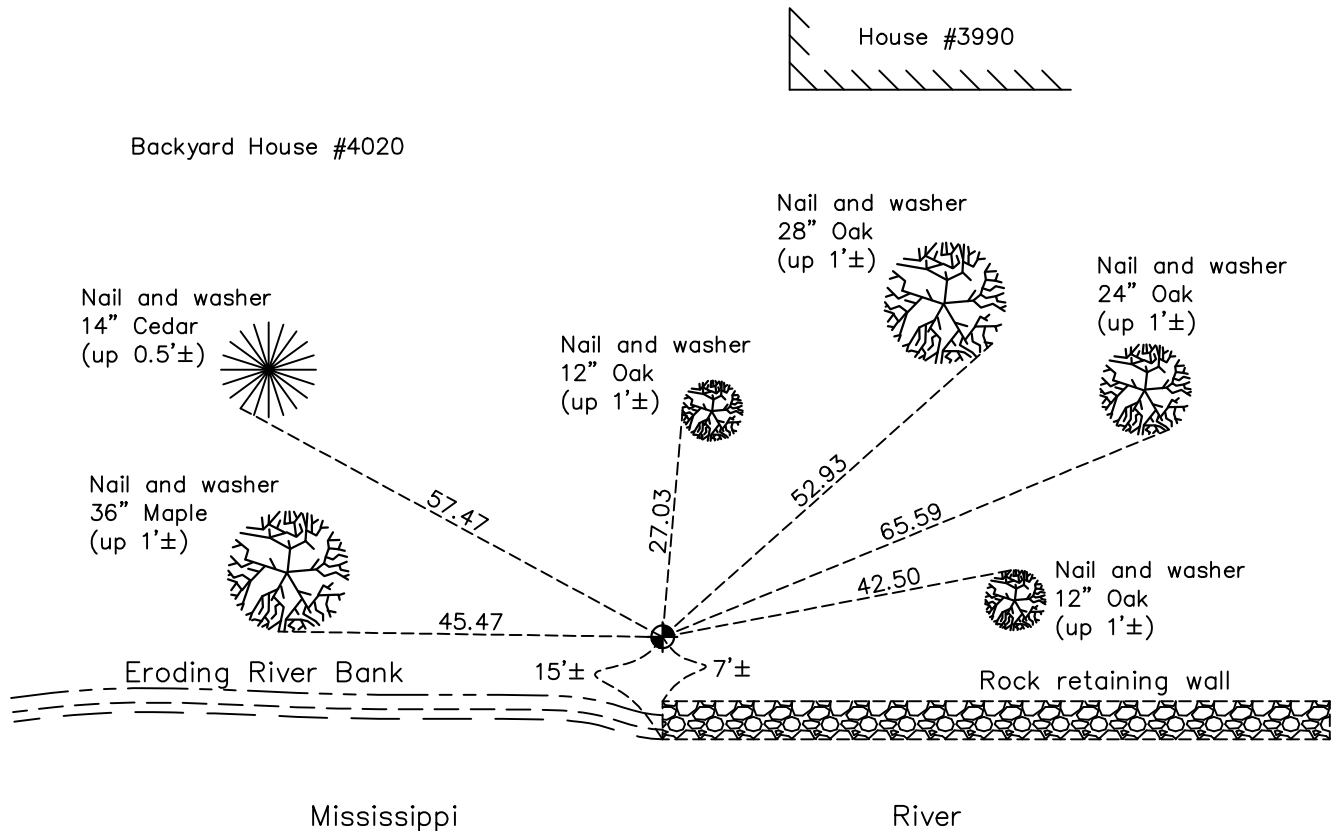
(Meander Corner No. 14—on west line of section)

On the 24th day of July, 1974, the described corner was evidenced by a cast iron monument

and to perpetuate the location of said corner, at the exact location thereof, a permanent marker was placed consisting of the same cast iron monument moved 6.0' north due to condition of river bank

AND on the 29th day of June, 2022, said permanent marker was found down 0.2'± and the ties were updated

Updated reference ties are as shown below.



Revision Date
06/29/2022

N.A.D. 1983 Coordinates
(1996 Adjustment)

County Project Coordinates	
Northing	<u>152065.2650</u>
Easting	<u>473771.5818</u>
Date	<u>4/27/151</u>

I hereby certify that this United States public land survey monument record is correct and complete to the best of my knowledge and belief.

_____ Date _____

David Zieglmeier Anoka County Surveyor
Minnesota License Number 46179

HISTORY OF GOVERNMENT CORNER

Page No. 57

County of Anoka

State of Minnesota

Witness Corner of Sec. 17 Township 31 Range 24
(Meander Corner No. 14—on west line of section)

CORNER HISTORY:

October 9, 1944 - H.A. Cartwright found concrete monument up 0.1'±. Established ties to monument.

August 19, 1959 - C.H. Parker found 2"x4" sandstone monument and updated ties.

July 18, 1960 - Found concrete monument broken off flush with the surface and leaning to the east with an iron pipe on the north side. Updated ties.

September 2, 1964 - Found concrete monument and updated ties.

July 25, 1966 - Found concrete monument and updated ties.

July 28, 1970 - Replaced broken concrete monument up 0.2'± with a cast iron monument set flush with the surface. Updated ties.

July 24, 1974 - Moved cast iron monument 6.00 feet north because it was sliding into river. Set cast iron monument flush with the surface.

June 21, 1977 - Found cast iron monument and updated ties.

July 26, 1983 - Found cast iron monument and updated ties.

June 19, 1986 - Found cast iron monument and updated ties.

August 29, 1990 - Found cast iron monument and updated ties.

August 23, 1994 - Found cast iron monument and updated ties.

October 11, 2001 - Found cast iron monument and established NAD 1983 (1996 Adjustment) Anoka County Project Coordinates by Static GPS methods. Updated ties.

October 11, 2001 - Found cast iron monument leaning to the south in the west end of a rock garden. Ties were updated and position will be verified.

April 17, 2015 - Found cast iron monument leaning at 45 degree angle towards river.

April 27, 2015 - Set cast iron monument in new witness corner position (7'± North of top bank and 15'± to river) using static GPS methods. Verified position by VRS GPS methods. Updated ties.

February 3, 2020 - Found cast iron monument down 0.2'±. Verified position by VRS GPS methods. Updated ties.

June 29, 2022 - Found cast iron monument down 0.2'±. Verified position by VRS GPS method. Updated ties.