

CERTIFICATE OF LOCATION OF GOVERNMENT CORNER

County of Anoka

State of Minnesota

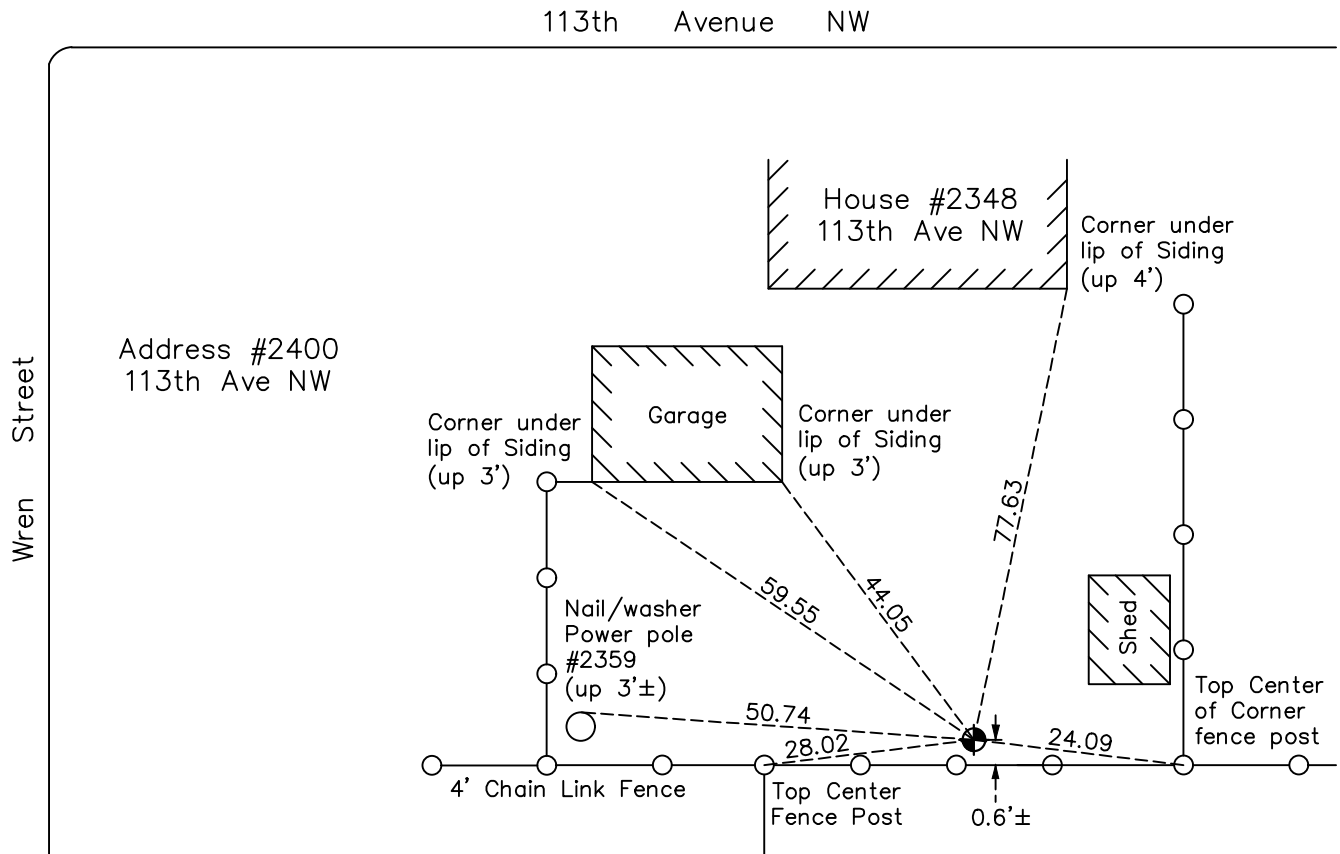
East 1/4 Corner of Sec. 16 Township 31 Range 24

On the 12th day of July, 1974, the described corner was evidenced by a concrete monument

and to perpetuate the location of said corner, at the exact location thereof, a permanent marker was placed consisting of a cast iron monument

AND on the 28th day of June, 2022, said permanent marker was found down 0.4'± and the ties were updated

Updated reference ties are as shown below.



Revision Date
 12/14/2022

N.A.D. 1983 Coordinates
 (1996 Adjustment)

County Project Coordinates	
Northing	151236.9274
Easting	484208.7297
Date	10/11/01

I hereby certify that this United States public land survey monument record is correct and complete to the best of my knowledge and belief.
David Zieglmeier Date 2/28/23
 David Zieglmeier Anoka County Surveyor
 Minnesota License Number 46179

HISTORY OF GOVERNMENT CORNER

Page No. 59

County of Anoka

State of Minnesota

East 1/4 Corner of Sec. 16 Township 31 Range 24

CORNER HISTORY:

May 28, 1944 - H.A. Cartwright found concrete monument down 15". Established ties to monument.

October 7, 1958 - Don Coulter for Harry S. Johnson Assoc. found concrete monument 1.5' below surface and updated ties.

August 10, 1960 - Found concrete monument and set four iron pipe straddles for correct location.

August 24, 1960 - Found concrete monument and updated ties.

March 15, 1963 - Found concrete monument with an iron pipe on the east side and updated ties.

June 5, 1964 - Found concrete monument down 0.5' with an iron pipe on the east side and updated ties.

July 13, 1966 - Found concrete monument down 0.5' with an iron pipe on the east side and updated ties.

August 3, 1970 - Found concrete monument with an iron pipe on the east side and updated ties.

July 12, 1974 - Replaced broken off concrete monument with cast iron monument set down 0.2'±. Updated ties.

June 21, 1977 - Found cast iron monument and updated ties.

July 7, 1980 - Found cast iron monument and updated ties.

August 14, 1990 - Found cast iron monument and updated ties.

August 16, 1994 - Found cast iron monument and updated ties.

October 11, 2001 - Found cast iron monument and established NAD 1983 (1996 Adjustment) Anoka County Project Coordinates by Static GPS methods. Updated ties.

March 24, 2010 - Found cast iron monument and updated ties.

May 13, 2015 - Found cast iron monument down 0.4'±. Verified position by VRS GPS methods. Updated ties.

March 27, 2020 - Found cast iron monument down 0.4'±. Verified position by VRS GPS methods. Updated ties.

June 28, 2022 - Found cast iron monument down 0.4'±. Verified position by VRS GPS method. Updated ties.