

CERTIFICATE OF LOCATION OF GOVERNMENT CORNER

County of Anoka

State of Minnesota

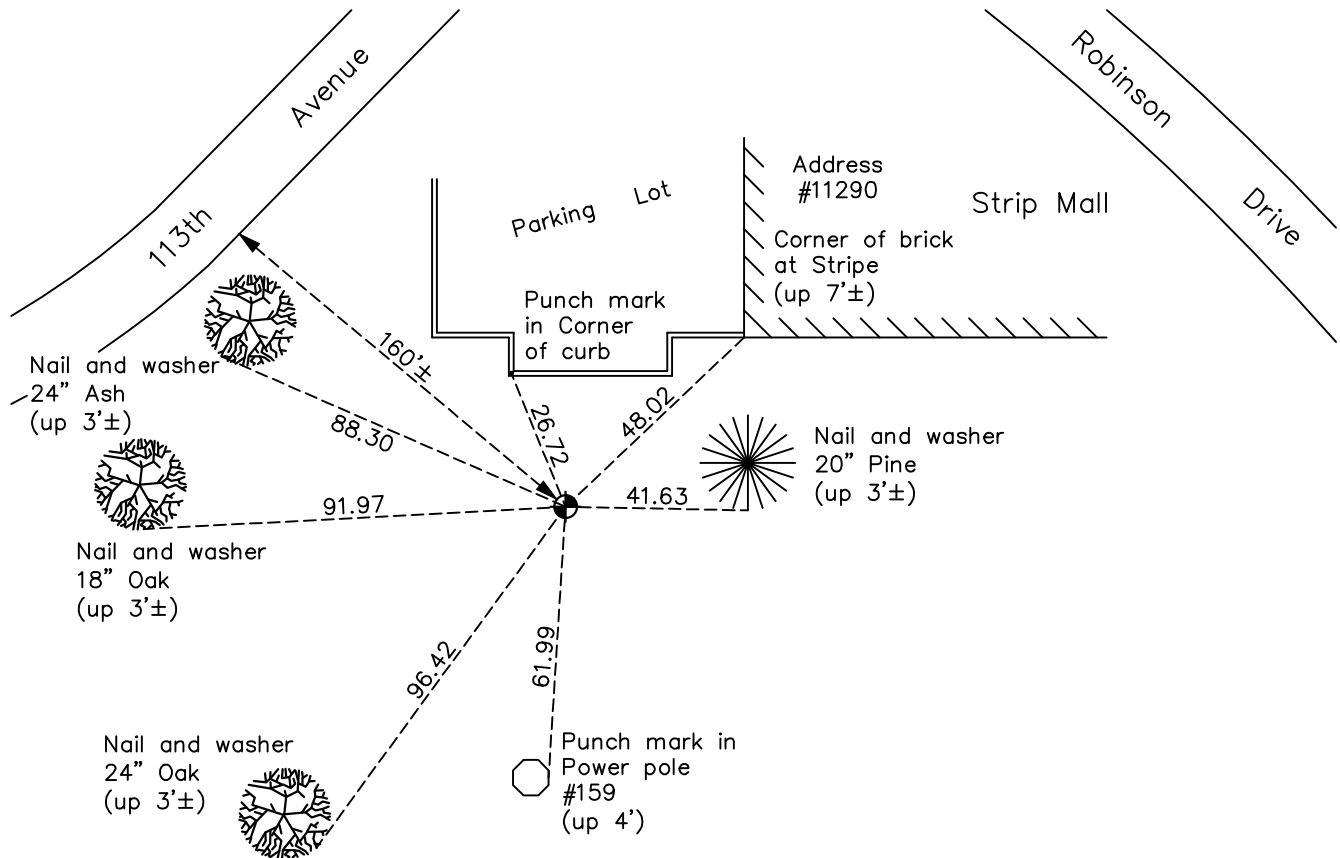
East 1/4 Corner of Sec. 15 Township 31 Range 24

On the 1st day of August, 1960, the described corner was evidenced by a concrete monument

and to perpetuate the location of said corner, at the exact location thereof, a permanent marker was placed consisting of cast iron monument (Judicial Landmark) found June 16, 1964

AND on the 11th day of July, 2022, said permanent marker was found down 1.3'± and the ties were updated. An underground sprinkler line is over the monument.

Updated reference ties are as shown below.



Revision Date
12/14/2022

N.A.D. 1983 Coordinates
 (1996 Adjustment)

| County Project Coordinates | |
|----------------------------|--------------------|
| Northing | <u>151108.2239</u> |
| Easting | <u>489548.0265</u> |
| Date | <u>8/03/01</u> |

I hereby certify that this United States public land survey monument record is correct and complete to the best of my knowledge and belief.
David Zieglmeier Date 2/28/23
 David Zieglmeier Anoka County Surveyor
 Minnesota License Number 46179

HISTORY OF GOVERNMENT CORNER

Page No. 60

County of Anoka

State of Minnesota

East 1/4 Corner of Sec. 15 Township 31 Range 24

CORNER HISTORY:

November 10, 1944 - H.A. Cartwright found concrete monument set flush with the surface under center of stone. Established ties to monument.

August 1, 1960 - Found concrete monument set flush with the surface with an iron pipe on the north side and updated ties.

June 16, 1964 - Found cast iron Judicial Landmark set flush with the surface and updated ties.

July 18, 1966 - Found cast iron Judicial Landmark and updated ties.

July 29, 1970 - Found cast iron Judicial Landmark set flush with the surface and updated ties. Monument is 2'± east of power pole line.

July 9, 1974 - Found cast iron Judicial Landmark and updated ties.

June 21, 1977 - Found cast iron Judicial Landmark and updated ties.

July 1, 1980 - Found cast iron Judicial Landmark and updated ties.

July 22, 1983 - Found cast iron Judicial Landmark and updated ties.

June 19, 1986 - Found cast iron Judicial Landmark and updated ties.

August 11, 1994 - Found cast iron Judicial Landmark and updated ties.

August 3, 2001 - Found cast iron Judicial Landmark and established NAD 1983 (1996 Adjustment) Anoka County Project Coordinates by Static GPS methods. Updated ties.

March 23, 2010 - Found cast iron Judicial Landmark down 1.1'± and updated ties. An underground sprinkler line is over the monument.

April 20, 2015 - Found cast iron Judicial Landmark down 1.1'±. Verified position by VRS GPS methods. Updated ties. An underground sprinkler line is over the monument.

February 26, 2020 - Found cast iron Judicial Landmark down 1.1'±. Verified position by VRS GPS methods. Updated ties. An underground sprinkler line is over the monument.

July 11, 2022 - Found cast iron Judicial Landmark down 1.3'±. Verified position by VRS GPS methods. Updated ties. An underground sprinkler line is over the monument.