

# CERTIFICATE OF LOCATION OF GOVERNMENT CORNER

County of Anoka

State of Minnesota

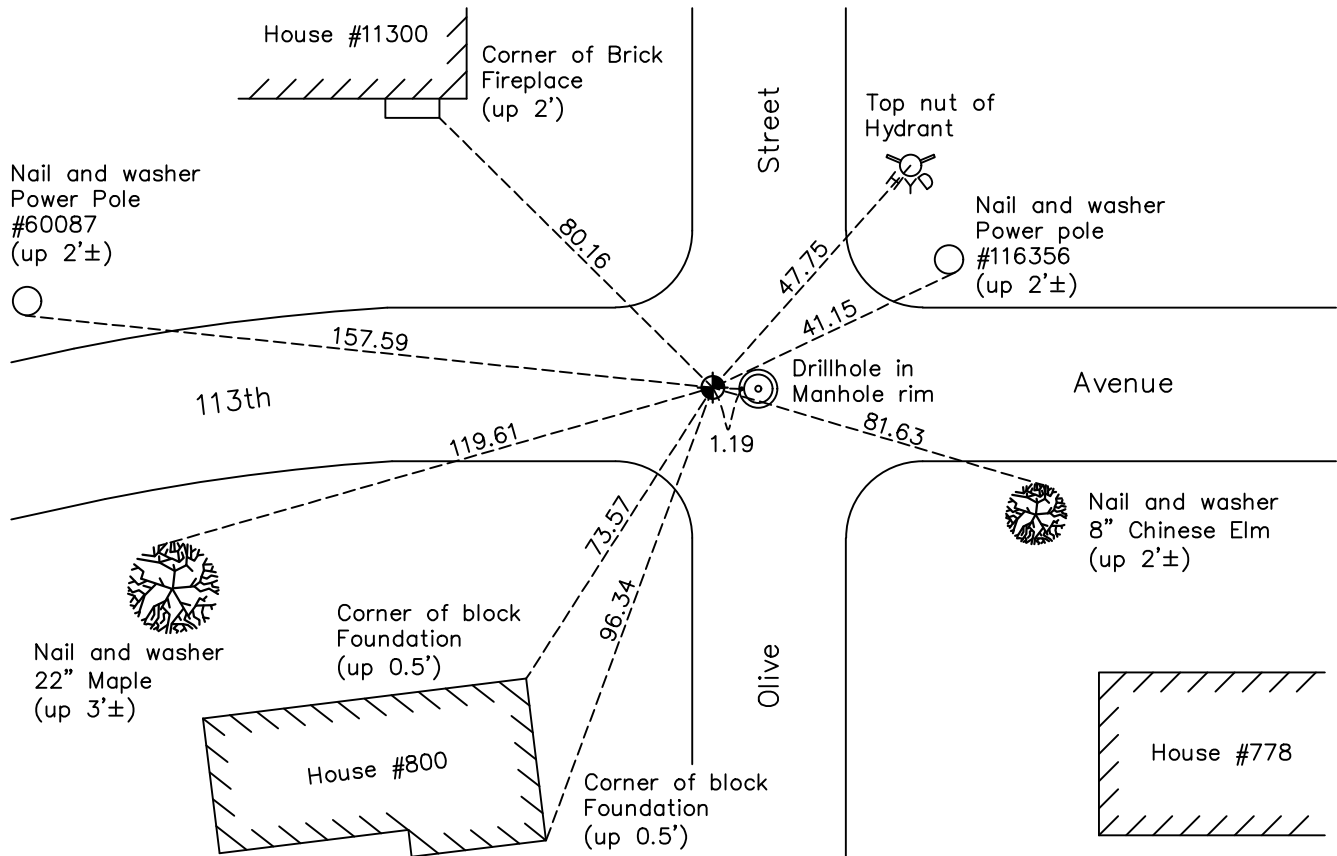
## West 1/4 Corner of Sec. 13 Township 31 Range 24

On the 21st day of August, 1967, the described corner was evidenced by a 1 1/2" iron pipe

and to perpetuate the location of said corner, at the exact location thereof, a permanent marker was placed consisting of a cast iron monument

AND on the 22nd day of July, 2022, said permanent marker was found flush and the ties were updated

Updated reference ties are as shown below.



Revision Date  
12/14/2022

N.A.D. 1983 Coordinates  
(1996 Adjustment)

County Project Coordinates	
Northing	<u>150956.3550</u>
Easting	<u>494777.2691</u>
Date	<u>8/29/01</u>

I hereby certify that this United States public land survey monument record is correct and complete to the best of my knowledge and belief.

*David Zieglmeier* Date 2/28/23

David Zieglmeier Anoka County Surveyor  
Minnesota License Number 46179

# HISTORY OF GOVERNMENT CORNER

Page No. 61

County of Anoka

State of Minnesota

## West 1/4 Corner of Sec. 13 Township 31 Range 24

### **CORNER HISTORY:**

April 19, 1946 - H.A. Cartwright found concrete monument set up 1'. Established ties to monument.

May 28, 1962 - All ties are gone.

October 18, 1963 - Found 1-1/2" iron pipe set flush with the surface and updated ties. Checked location of iron using area plats.

August 21, 1967 - Replaced 1-1/2" iron pipe with a cast iron monument set flush with the surface. Updated ties.

July 30, 1970 - Found cast iron monument 8'± west of centerline and set P.K. nails 2.00' south and west. Updated ties.

July 12, 1974 - Found cast iron monument and updated ties.

June 22, 1977 - Found cast iron monument and updated ties.

July 7, 1980 - Found cast iron monument and updated ties.

July 18, 1983 - Found cast iron monument and updated ties.

February 6, 1984 - Found cast iron monument and updated ties.

June 19, 1986 - Found cast iron monument and updated ties.

August 13, 1990 - Found cast iron monument and updated ties.

August 11, 1994 - Found cast iron monument and updated ties.

August 29, 2001 - Found cast iron monument and established NAD 1983 (1996 Adjustment) Anoka County Project Coordinates by Static GPS methods. Updated ties.

February 9, 2010 - Found cast iron monument broken off down 0.6' and updated ties.

April 27, 2015 - Found broken cast iron monument. Checked ties to center of fin. Checked position by VRS GPS methods.

May 5, 2015 - Verified position of broken cast iron monument using static GPS methods

May 13, 2015 - Replaced broken cast iron monument with a new cast iron monument using static GPS methods. Updated ties.

January 27, 2020 - Found cast iron monument flush. Verified position by VRS GPS methods. Updated ties.

July 22, 2022 - Found cast iron monument flush. Verified position by VRS GPS method. Updated ties.