

CERTIFICATE OF LOCATION OF GOVERNMENT CORNER

County of Anoka

State of Minnesota

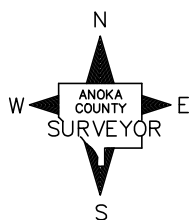
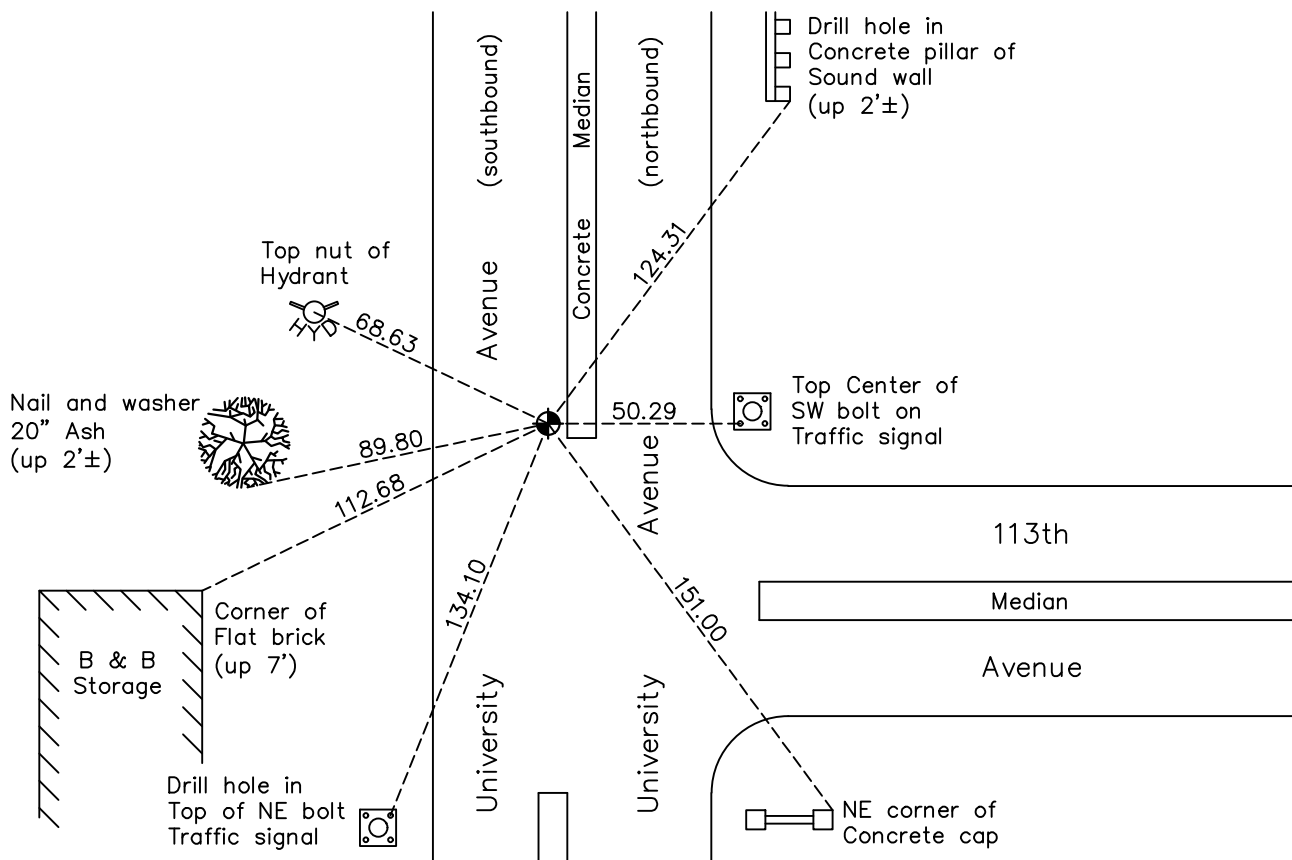
East 1/4 Corner of Sec. 13 Township 31 Range 24

On the 24th day of July, 1970, the described corner was evidenced by a concrete monument and iron pipe centered on top

and to perpetuate the location of said corner, at the exact location thereof, a permanent marker was placed consisting of a cast iron monument

AND on the 12th day of July, 2022, said permanent marker was found flush and the ties were updated

Updated reference ties are as shown below.



Revision Date
 12/16/2022

N.A.D. 1983 Coordinates
 (1996 Adjustment)

County Project Coordinates	
Northing	151043.9380
Easting	500123.0377
Date	10/12/98

I hereby certify that this United States public land survey monument record is correct and complete to the best of my knowledge and belief.
David Zieglmeier Date 2/28/23
 David Zieglmeier Anoka County Surveyor
 Minnesota License Number 46179

HISTORY OF GOVERNMENT CORNER

Page No. 63

County of Anoka

State of Minnesota

East 1/4 Corner of Sec. 13 Township 31 Range 24

CORNER HISTORY:

November 11, 1944 - H.A. Cartwright found concrete monument set down 0.5'. Established ties to monument.

September 1954 - Harold Wilke found concrete monument and updated ties.

July 1955 - Minder Engineering Company found concrete monument down 1' with an iron pipe on the north side. Set iron pipe on top of concrete monument and updated ties.

February 24, 1960 - Found concrete monument down 14" with iron pipe centered over monument. Updated ties.

June 17, 1964 - Found concrete monument and iron pipe. Updated ties.

July 24, 1970 - Replaced iron pipe on top of concrete monument with a cast iron monument set flush with the surface. Set P.K. nails 2.00' north and east. Updated ties.

May 9, 1973 - Found cast iron monument and updated ties prior to construction.

July 10, 1974 - Set cast iron monument flush with surface over concrete monument after road construction.

July 27, 1978 - Found cast iron monument and updated ties.

September 25, 1978 - Raised cast iron monument to surface and updated ties.

June 30, 1980 - Found cast iron monument and updated ties.

June 18, 1988 - Found cast iron monument and updated ties.

August 3, 1994 - Found cast iron monument and updated ties.

October 12, 1998 - Found cast iron monument and established NAD 1983 (1996 Adjustment) Anoka County Project Coordinates by Static GPS methods. Updated ties.

March 2010 - Found cast iron monument and updated ties.

October 6, 2014 - Set construction ties and updated corner ties prior to road construction. Removed monument.

June 28, 2016 - Set cast iron monument after road construction using construction ties. Verified location of corner by Static GPS methods. Updated ties.

January 27, 2020 - Found cast iron monument. Verified position by VRS GPS methods. Updated ties.

July 12, 2022 - Found cast iron monument flush. Verified position by VRS GPS method. Updated ties.