

# CERTIFICATE OF LOCATION OF GOVERNMENT CORNER

County of Anoka

State of Minnesota

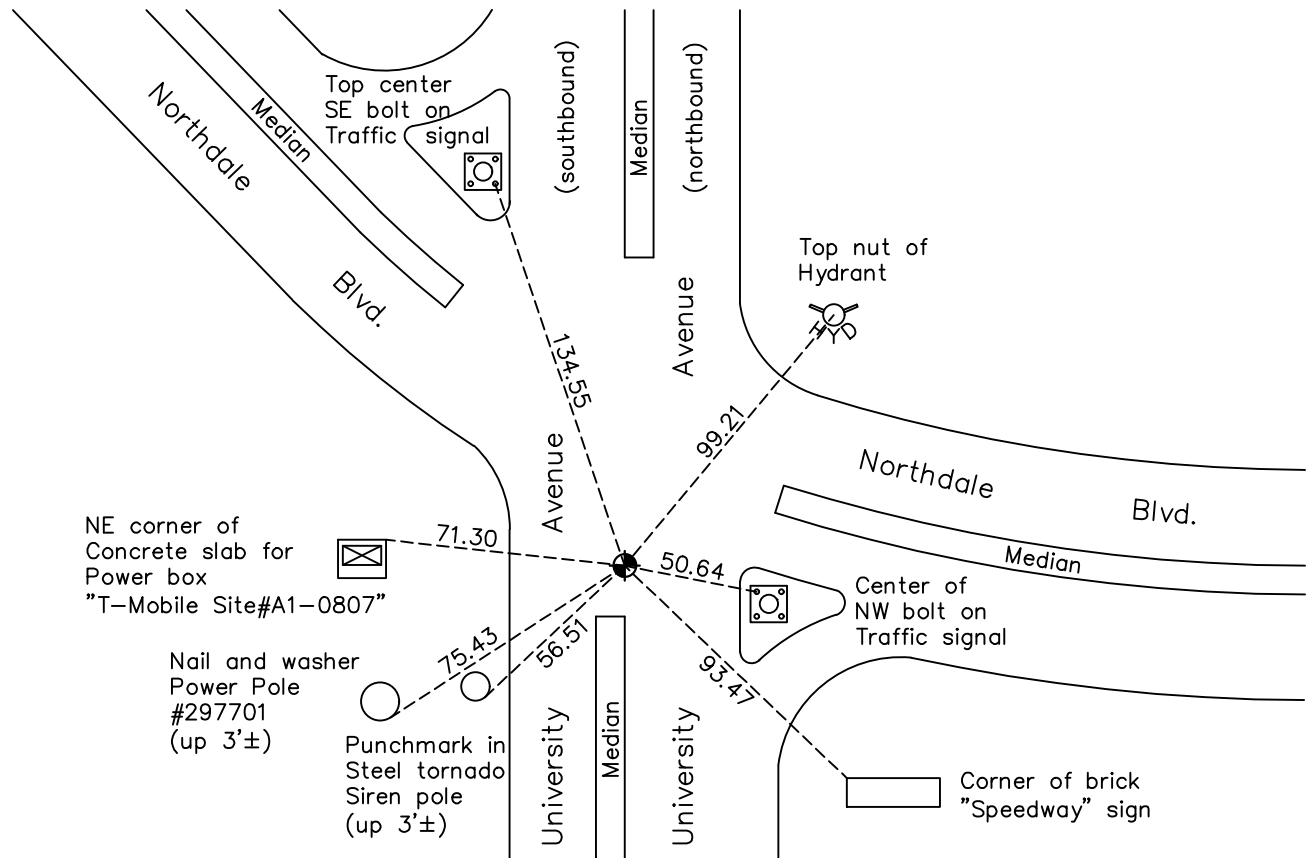
## Northeast Corner of Sec. 24 Township 31 Range 24

On the 29th day of August, 1968, the described corner was evidenced by a granite monument

and to perpetuate the location of said corner, at the exact location thereof, a permanent marker was placed consisting of a cast iron monument

AND on the 27th day of July, 2022, said permanent marker was found flush and the ties were updated

Updated reference ties are as shown below.



Revision Date  
 12/16/2022

N.A.D. 1983 Coordinates  
(1996 Adjustment)

County Project Coordinates	
Northing	148408.6215
Easting	500102.9704
Date	6/11/98

I hereby certify that this United States public land survey monument record is correct and complete to the best of my knowledge and belief.

*David Zieglmeier* Date 2/28/23

David Zieglmeier Anoka County Surveyor  
 Minnesota License Number 46179

# HISTORY OF GOVERNMENT CORNER

Page No. 64

County of Anoka

State of Minnesota

## Northeast Corner of Sec. 24 Township 31 Range 24

### **CORNER HISTORY:**

June 7, 1943 - H.A. Cartwright found granite monument set down 4". Established ties to monument.

September 1954 - Harold Wilke found granite monument and updated ties.

February 23, 1960 - Found granite monument set down 5" with a short iron pipe over center of monument and updated ties.

September 24, 1962 - N.C. Hoium found concrete (granite) monument and updated ties.

June 26, 1964 - Found granite monument set down 5" with an iron pipe flush with the blacktop and set P.K. nails 2.00' north and east. Updated ties.

July 11, 1966 - Found granite monument with iron pipe over center of monument and updated ties.

June 19, 1968 - Found granite monument with iron pipe over center of monument and updated ties.

August 29, 1968 - Found granite monument laying over. Replaced granite monument with a cast iron monument set flush with the surface and set P.K. nails 2.00' north and west. Updated ties.

July 16, 1974 - Found cast iron monument and updated ties.

June 22, 1977 - Found cast iron monument and updated ties.

July 27, 1978 - Found cast iron monument and updated ties.

July 8, 1980 - Found cast iron monument and updated ties.

November 18, 1980 - Found cast iron monument and updated ties.

Date unknown - Set construction ties prior to road construction.

October 28, 1986 - Set cast iron monument after road construction using construction ties.

February 14, 1992 - Found cast iron monument and updated ties.

August 8, 1994 - Found cast iron monument and updated ties.

June 11, 1998 - Found cast iron monument and established NAD 1983 (1996 Adjustment) Anoka County Project Coordinates by Static GPS methods.

December 15, 1998 - Found cast iron monument and updated ties.

March 2010 - Found cast iron monument and updated ties.

May 28, 2015 - Found cast iron monument. Verified position by VRS GPS methods. Updated ties.

January 27, 2020 - Found cast iron monument. Verified position by VRS GPS methods. Updated ties.

July 27, 2022 - Found cast iron monument flush. Verified position by VRS GPS method. Updated ties.