

# CERTIFICATE OF LOCATION OF GOVERNMENT CORNER

County of Anoka

State of Minnesota

## Southwest Corner of Sec. 13 Township 31 Range 24

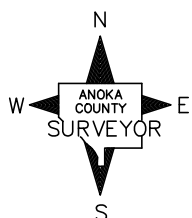
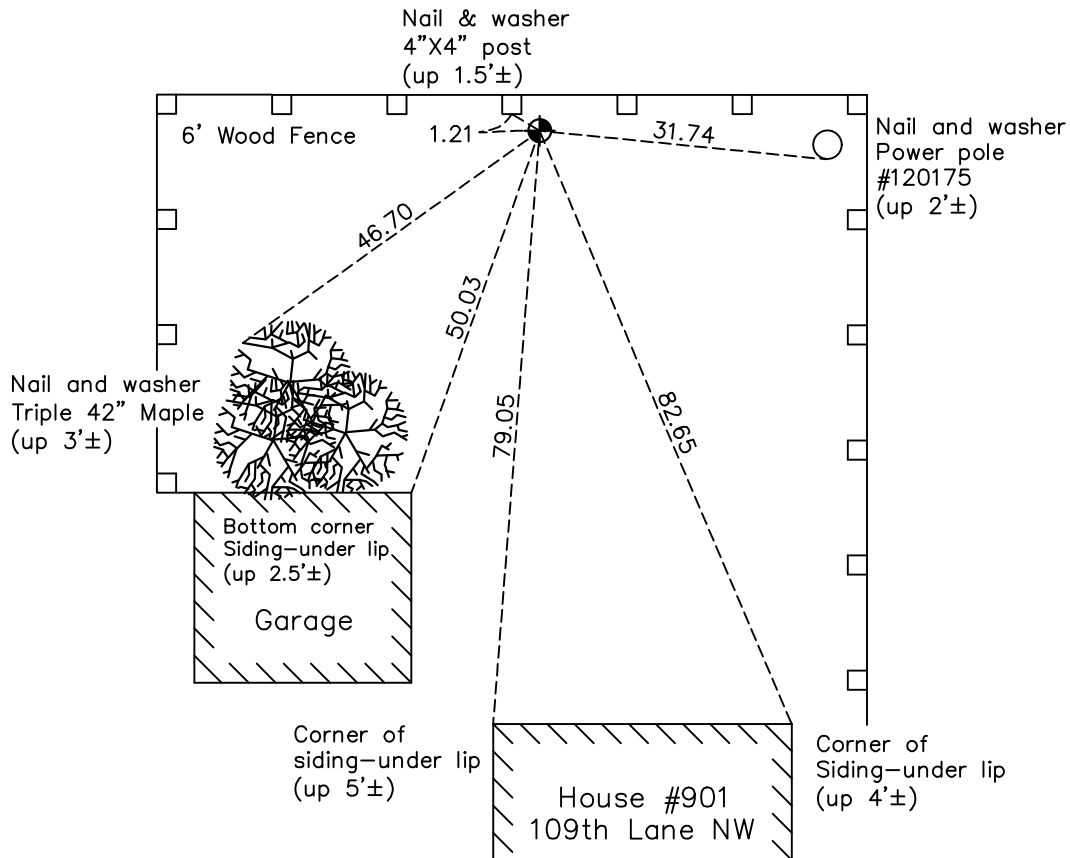
On the 30th day of July, 1970, the described corner was evidenced by a concrete monument

and to perpetuate the location of said corner, at the exact location thereof, a permanent marker was placed consisting of a cast iron monument on top of the concrete monument

(concrete removed and new CIM set July 12, 1974)

AND on the 3rd day of July, 2022, said permanent marker was found down 0.5'± and the ties were updated

Updated reference ties are as shown below.



Revision Date

12/16/2022

N.A.D. 1983 Coordinates  
(1996 Adjustment)

County Project Coordinates	
Northing	148334.6945
Easting	494790.5492
Date	10/24/01

I hereby certify that this United States public land survey monument record is correct and complete to the best of my knowledge and belief.

*David Zieglmeier* Date 2/28/23

David Zieglmeier Anoka County Surveyor  
Minnesota License Number 46179

# HISTORY OF GOVERNMENT CORNER

Page No. 66

County of Anoka

State of Minnesota

## Southwest Corner of Sec. 13 Township 31 Range 24

### **CORNER HISTORY:**

June 5, 1943 - H.A. Cartwright found concrete monument set flush. Established ties to monument.

July 1955 - Minder Engineering Company found concrete monument and updated ties.

September 28, 1959 - N.C. Hoium found concrete monument with top broken off and an iron pipe on the south side. Updated ties.

February 24, 1960 - Found concrete monument broken off down 8" w/iron pipe on the north side. Updated ties.

June 4, 1964 - Found concrete monument and updated ties.

July 12, 1966 - Found concrete monument and updated ties.

July 30, 1970 - Found concrete monument and set broken off cast iron monument flush with the surface on top of concrete monument. Updated ties.

July 12, 1974 - Found cast iron monument leaning and concrete monument broken in several places. Replaced with new cast iron monument set down 0.5'± and updated ties. There is a buried cable under top of monument on north side.

June 22, 1977 - Found cast iron monument and updated ties.

July 10, 1980 - Found cast iron monument and updated ties.

July 25, 1983 - Found cast iron monument and updated ties.

March 7, 1984 - Found cast iron monument and updated ties.

June 23, 1986 - Found cast iron monument and updated ties.

April 26, 1991 - Found cast iron monument and updated ties.

August 11, 1994 - Found cast iron monument and updated ties.

October 24, 2001 - Found cast iron monument and established NAD 1983 (1996 Adjustment) Anoka County Project Coordinates by Static GPS methods. Updated ties.

March 23, 2010 - Found cast iron monument and updated ties.

May 15, 2015 - Found cast iron monument down 0.5'± and updated ties.

March 27, 2020 - Found cast iron monument down 0.5'±. Verified position by VRS GPS methods. Updated ties.

July 3, 2022 - Found cast iron monument down 0.5'±. Verified position by VRS GPS method. Updated ties.