

CERTIFICATE OF LOCATION OF GOVERNMENT CORNER

County of Anoka

State of Minnesota

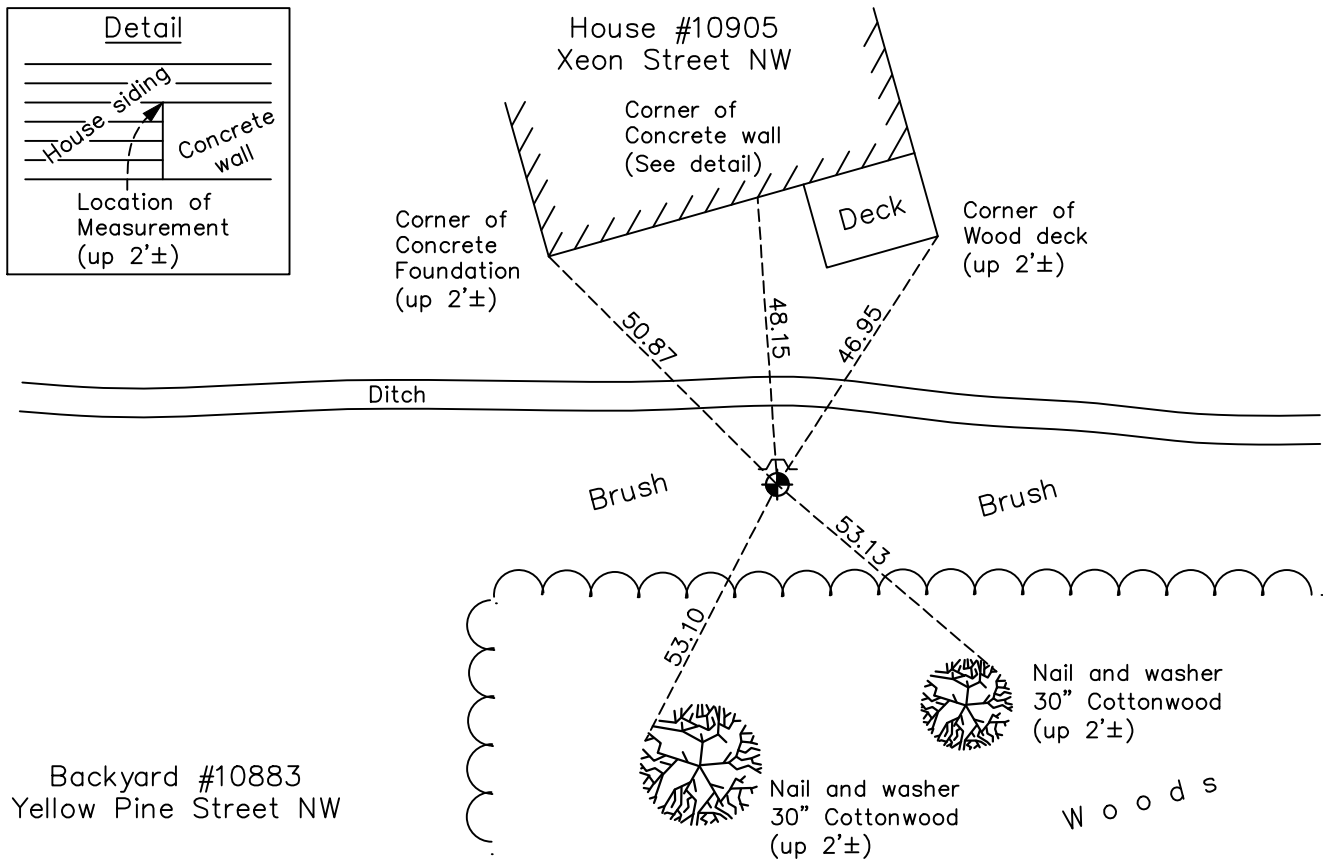
North $\frac{1}{4}$ Corner of Sec. 23 Township 31 Range 24

On the 23rd day of June, 1964, the described corner was evidenced by a concrete monument

and to perpetuate the location of said corner, at the exact location thereof, a permanent marker was placed consisting of a cast iron monument found July 18, 1966

AND on the 11th day of July, 2022, said permanent marker was found down 0.5'± with a sign and post on the north side and the ties were updated

Updated reference ties are as shown below.



Revision Date
12/16/2022

N.A.D. 1983 Coordinates
(1996 Adjustment)

County Project Coordinates	
Northing	<u>148365.0394</u>
Easting	<u>492162.7899</u>
Date	<u>10/23/01</u>

I hereby certify that this United States public land survey monument record is correct and complete to the best of my knowledge and belief.

David Zieglmeier Date 2/28/23

David Zieglmeier Anoka County Surveyor
Minnesota License Number 46179

HISTORY OF GOVERNMENT CORNER

Page No. 67

County of Anoka

State of Minnesota

North 1/4 Corner of Sec. 23 Township 31 Range 24

CORNER HISTORY:

1957 - Minder Engineering Company found concrete monument set up 6". Established ties to monument.

August 1, 1960 - Found concrete monument flush with the surface and an iron pipe on the north side. Updated ties. Monument is under high power line running east/west.

June 23, 1964 - Found concrete monument and updated ties.

July 18, 1966 - Replaced cast iron monument (missing and date set unknown) with a new cast iron monument. Updated ties.

July 30, 1970 - Found cast iron monument and updated ties.

July 9, 1974 - Found cast iron monument and updated ties.

July 10, 1980 - Found cast iron monument and updated ties.

June 8, 1988 - Replaced broken cast iron monument with a new cast iron monument using position of broken monument base. Set a sign and post on the north side and updated ties.

August 28, 1990 - Found cast iron monument with sign and post on the north side and updated ties.

August 22, 1994 - Found cast iron monument and updated ties.

October 23, 2001 - Found cast iron monument and established NAD 1983 (1996 Adjustment) Anoka County Project Coordinates by Static GPS methods. Updated ties.

March 15, 2010 - Found cast iron monument with sign and post on the north side and updated ties.

May 14, 2015 - Found cast iron monument down 0.5'± with sign and post on the north side and updated ties.

January 27, 2020 - Found cast iron monument down 0.5'± with sign and post on the north side. Verified position by VRS GPS methods. Updated ties.

July 11, 2022 - Found cast iron monument down 0.5'± . Verified position by VRS GPS method. Updated ties.