

CERTIFICATE OF LOCATION OF GOVERNMENT CORNER

County of Anoka

State of Minnesota

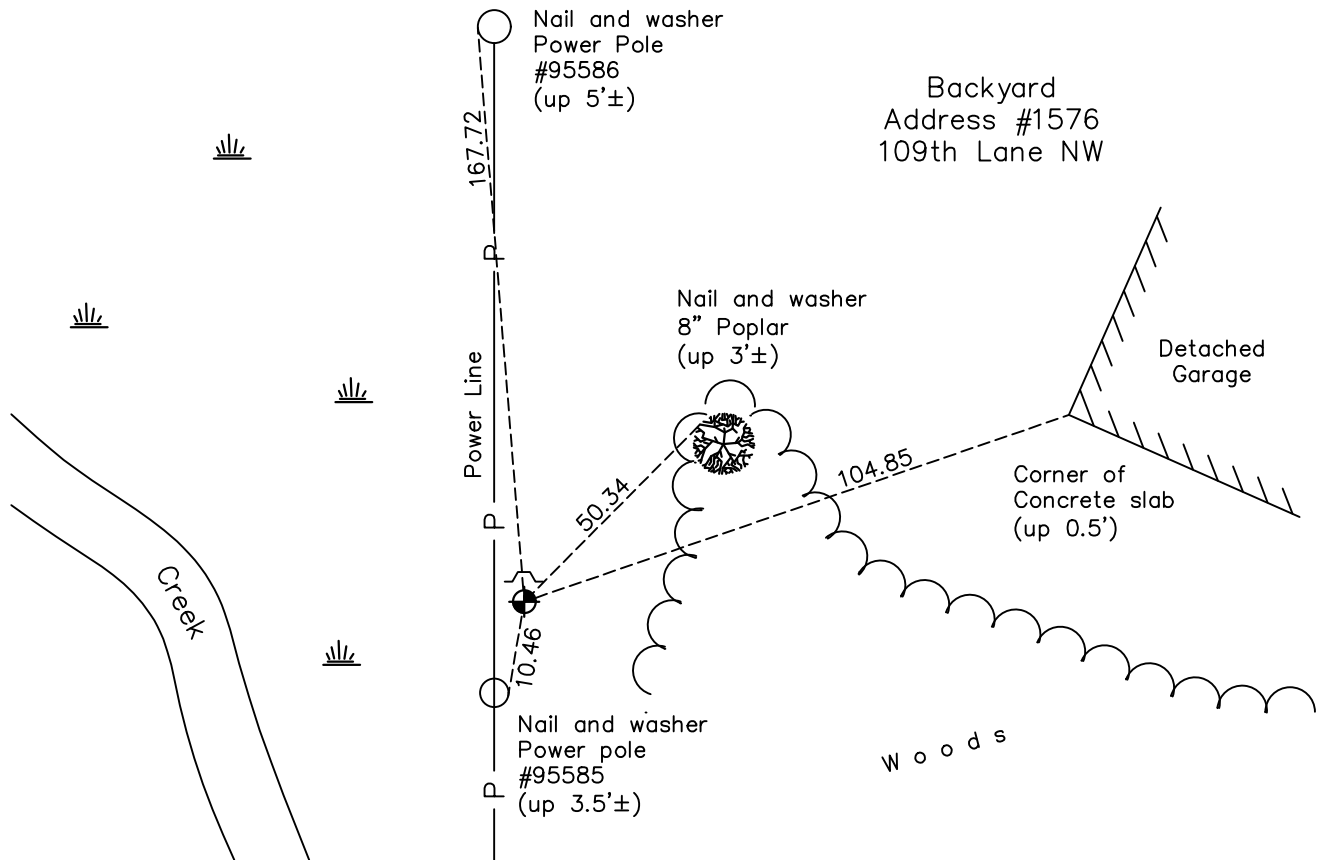
Southeast Corner of Sec. 15 Township 31 Range 24

On the 8th day of February, 2011, the described corner was evidenced by 1-1/2" red and white iron pipe

and to perpetuate the location of said corner, at the exact location thereof, a permanent marker was placed consisting of a red and white 2" square Telspar Monument up 0.7'± with punched "County Surveyor" cap

AND on the 27th day of July, 2022, said permanent marker was found up 0.7'± with a sign and post on the north side and the ties were updated

Updated reference ties are as shown below.



Revision Date
 12/16/2022

N.A.D. 1983 Coordinates
 (1996 Adjustment)

County Project Coordinates	
Northing	148443.4130
Easting	489522.8802
Date	10/23/01

I hereby certify that this United States public land survey monument record is correct and complete to the best of my knowledge and belief.
David Zieglmeier Date 2/28/23
 David Zieglmeier Anoka County Surveyor
 Minnesota License Number 46179

HISTORY OF GOVERNMENT CORNER

Page No. 68

County of Anoka

State of Minnesota

Southeast Corner of Sec. 15 Township 31 Range 24

CORNER HISTORY:

August 1, 1960 - Found 1-1/2" iron pipe set up 6". Established ties to monument.

October 24, 1963 - Set 1-1/2"x9' iron pipe (painted with 6" red and white bands) set up 4.5'±.

June 3, 1964 - Found 1-1/2" red and white iron pipe and updated ties.

July 15, 1966 - Found 1-1/2" red and white iron pipe and updated ties.

July 30, 1970 - Found 1-1/2" red and white iron pipe up 3.5'± and updated ties.

June 22, 1977 - Found 1-1/2" red and white iron pipe and updated ties.

July 1, 1980 - Found 1-1/2" red and white iron pipe and updated ties.

July 26, 1983 - Found 1-1/2" red and white iron pipe and updated ties.

September 12, 1986 - Found 1-1/2" red and white iron pipe and updated ties.

August 24, 1990 - Found 1-1/2" red and white iron pipe up 1'± and updated ties.

August 22, 1994 - Found 1-1/2" red and white iron pipe up 1'± and updated ties.

October 23, 2001 - Found 1-1/2" red and white iron pipe and established NAD 1983 (1996 Adjustment) Anoka County Project Coordinates by Static GPS methods. Updated ties.

February 8, 2011 - Replaced 1-1/2" red and white iron pipe with a red and white 2" square steel Telspar monument set up 0.7'± with a punched 'County Surveyor' cap. Set sign and post on north side and updated ties.

May 14, 2015 - Found red and white 2" square steel Telspar monument up 0.7'± with punchmarked 'County Surveyor' cap and sign and post on the north side. Updated ties.

February 3, 2020 - Found red and white 2" square steel Telspar monument up 0.7'± with punchmarked 'County Surveyor' cap and sign and post on the north side. Verified position by VRS GPS methods. Updated ties.

July 27, 2022 - Found red and white 2" square steel Telspar monument up 0.7'± with punchmarked 'County Surveyor' cap and sign and post on the north side. Verified position by VRS GPS methods. Updated ties.