

# CERTIFICATE OF LOCATION OF GOVERNMENT CORNER

County of Anoka

State of Minnesota

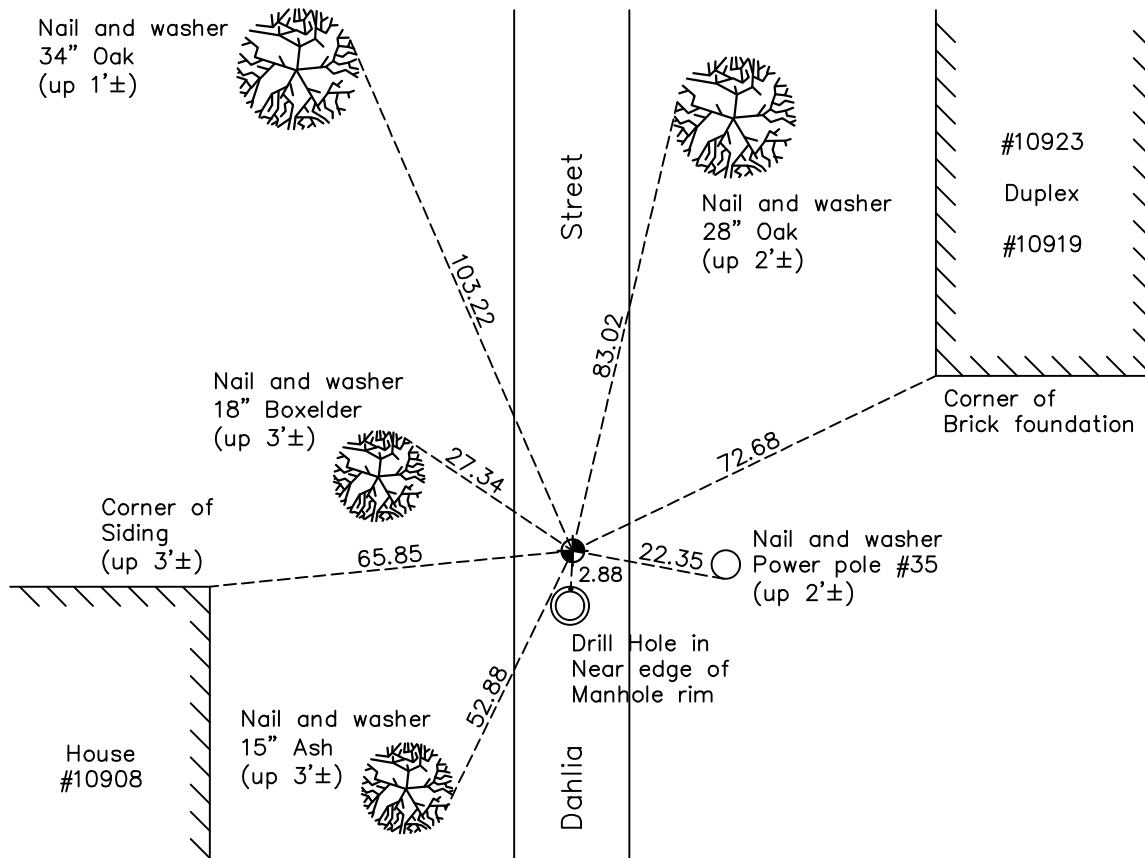
## North 1/4 Corner of Sec. 21 Township 31 Range 24

On the 29th day of July, 1970, the described corner was evidenced by a concrete monument

and to perpetuate the location of said corner, at the exact location thereof, a permanent marker was placed consisting of a cast iron monument

AND on the 21st day of July, 2022, said permanent marker was found flush and the ties were updated

Updated reference ties are as shown below.



Revision Date  
12/16/2022

N.A.D. 1983 Coordinates  
 (1996 Adjustment)

County Project Coordinates	
Northing	148580.9799
Easting	481513.9677
Date	8/30/01

I hereby certify that this United States public land survey monument record is correct and complete to the best of my knowledge and belief.

*David Zieglmeier* Date 2/28/23

David Zieglmeier Anoka County Surveyor  
 Minnesota License Number 46179

# HISTORY OF GOVERNMENT CORNER

Page No. 71

County of Anoka

State of Minnesota

## North 1/4 Corner of Sec. 21 Township 31 Range 24

### **CORNER HISTORY:**

May 26, 1944 - H.A. Cartwright found concrete monument set flush. Established ties to monument.

October 7, 1958 - Don Coulter found concrete monument and updated ties.

July 29, 1960 - Found concrete monument flush with the surface with an iron pipe flush on the north side of monument. Updated ties.

June 4, 1964 - Found concrete monument and updated ties.

July 13, 1966 - Found concrete monument and updated ties.

July 29, 1970 - Found concrete monument missing. Reset position of corner with cast iron monument using ties and set P.K. nails 2.00' north and east. Updated ties.

July 16, 1974 - Found cast iron monument and updated ties.

June 23, 1977 - Found cast iron monument and updated ties.

June 26, 1980 - Found cast iron monument and updated ties.

June 13, 1986 - Found cast iron monument and updated ties.

August 21, 1994 - Found cast iron monument and updated ties.

August 30, 2001 - Found cast iron monument and established NAD 1983 (1996 Adjustment) Anoka County Project Coordinates by Static GPS methods. Updated ties.

April 10, 2006 - Found cast iron monument and updated ties.

March 8, 2010 - Found cast iron monument and updated ties.

April 22, 2015 - Found cast iron monument. Verified position by VRS GPS methods. Updated ties.

January 31, 2020 - Found cast iron monument. Verified position by VRS GPS methods. Updated ties.

July 21, 2022 - Found cast iron monument flush. Verified position by VRS GPS method. Updated ties.