

CERTIFICATE OF LOCATION OF GOVERNMENT CORNER

County of Anoka

State of Minnesota

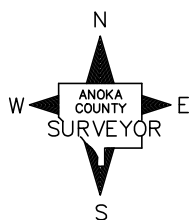
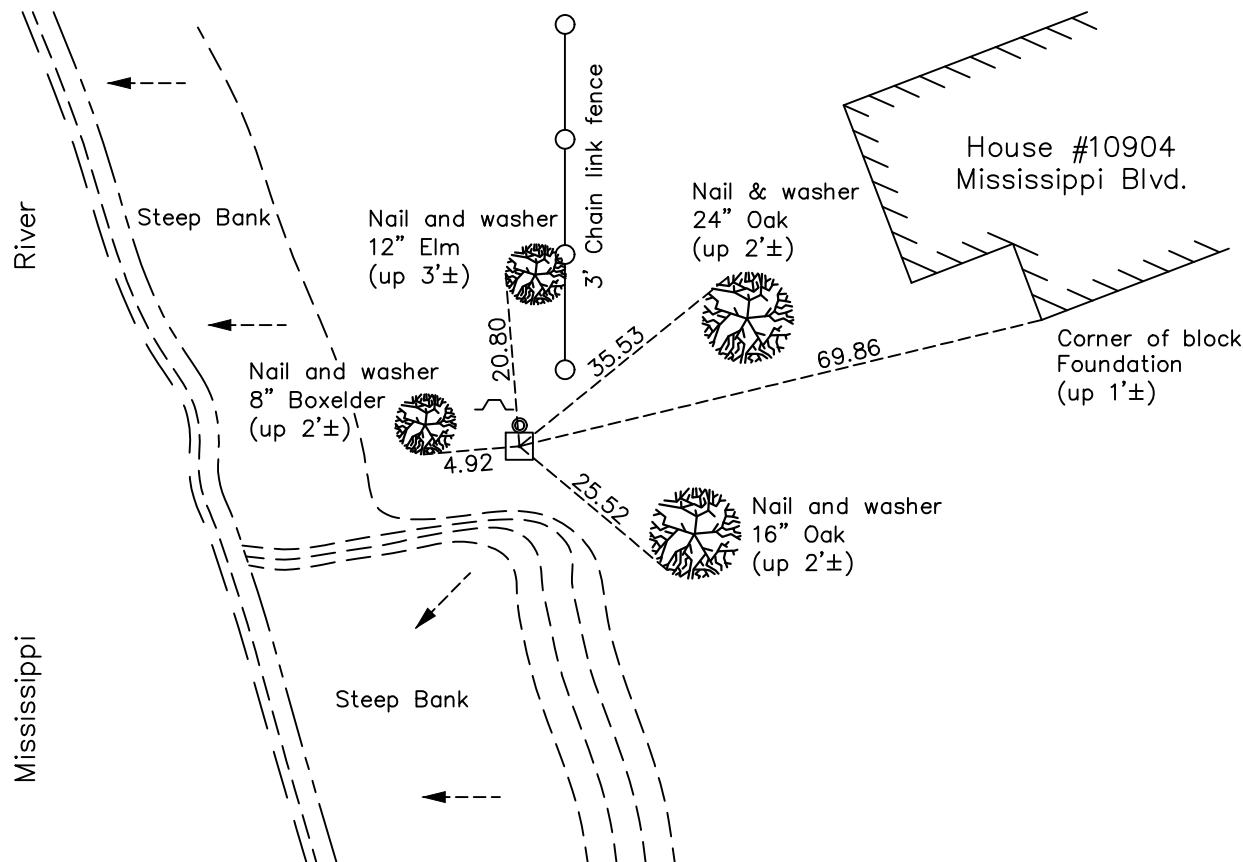
Meander Corner of Sec. 17 Township 31 Range 24 (Meander corner No. 13—on south line of section)

On the 28th day of October, 1944, the described corner was evidenced by a concrete monument

and to perpetuate the location of said corner, at the exact location thereof, a permanent marker was placed consisting of the same concrete monument with a 1/2" iron pipe on the north side

AND on the 29th day of June, 2022, said permanent marker was found up 0.5' with a sign and post 0.8' northwest and the ties were updated

Updated reference ties are as shown below.



Revision Date
12/16/2022

N.A.D. 1983 Coordinates
(1996 Adjustment)

County Project Coordinates	
Northing	148608.2075
Easting	478398.6037
Date	10/10/01

I hereby certify that this United States public land survey monument record is correct and complete to the best of my knowledge and belief.
David Zieglmeier Date 2/28/23
 David Zieglmeier Anoka County Surveyor
 Minnesota License Number 46179

HISTORY OF GOVERNMENT CORNER

Page No. 73

County of Anoka

State of Minnesota

Meander Corner of Sec. 17 Township 31 Range 24

(Meander corner No. 13—on south line of section)

CORNER HISTORY:

October 28, 1944 - H.A. Cartwright found concrete monument set up 0.2'. Established ties to monument.

July 29, 1960 - Found concrete monument up 0.4' and updated ties.

June 4, 1964 - Found concrete monument and updated ties.

July 14, 1966 - Found concrete monument and updated ties.

July 29, 1970 - Found concrete monument with a 1/2" iron pipe on the north side and updated the ties.

June 23, 1977 - Found concrete monument and updated ties.

July 9, 1980 - Found concrete monument and updated ties.

June 19, 1986 - Found concrete monument and updated ties.

August 29, 1990 - Found concrete monument and set a sign and post on the north side. Updated ties.

August 21, 1994 - Found concrete monument and updated ties.

October 10, 2001 - Found concrete monument and established NAD 1983 (1996 Adjustment) Anoka County Project Coordinates by Static GPS methods. Updated ties.

March 2010 - Found concrete monument up 0.5' with a sign and post 0.8' northwest. Updated ties.

April 22, 2015- Found concrete monument up 0.5' with a sign and post 0.8' northwest. Updated ties.

February 3, 2020 - Found concrete monument up 0.5' with a sign and post 0.8' northwest. Verified position by VRS GPS methods. Updated ties.

June 29, 2022 - Found concrete monument up 0.5'±, verified position by VRS GPS method and updated ties.