

CERTIFICATE OF LOCATION OF GOVERNMENT CORNER

County of Anoka

State of Minnesota

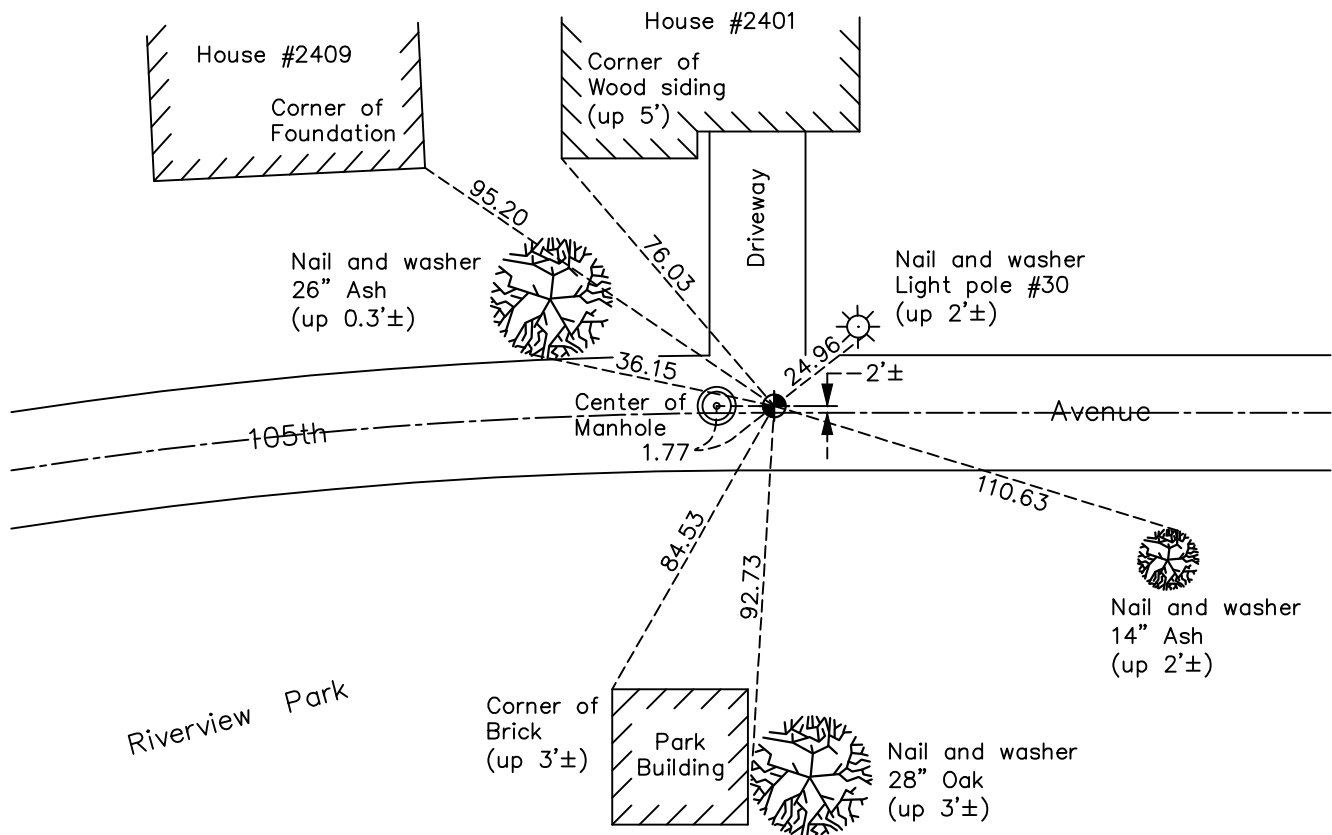
West 1/4 Corner of Sec. 22 Township 31 Range 24

On the 29th day of July, 2022, the described corner was evidenced by a cast iron monument

and to perpetuate the location of said corner, at the exact location thereof, a permanent marker was placed consisting of 1/2" Capped, Iron Pipe

AND on the 29th day of July, 2022, said permanent marker was reset after CIM not found due to road construction, with a 1.7' - 1/2" capped Iron Pipe and updated ties after reset

Updated reference ties are as shown below.



Revision Date
12/16/2022

N.A.D. 1983 Coordinates
(1996 Adjustment)

County Project Coordinates	
Northing	145940.1171
Easting	484104.2675
Date	8/23/01

I hereby certify that this United States public land survey monument record is correct and complete to the best of my knowledge and belief.

David Zieglmeier Date 2/28/23

David Zieglmeier Anoka County Surveyor
Minnesota License Number 46179

HISTORY OF GOVERNMENT CORNER

Page No. 74

County of Anoka

State of Minnesota

West 1/4 Corner of Sec. 22 Township 31 Range 24

CORNER HISTORY:

November 24, 1944 - H.A. Cartwright found concrete monument set down 0.3'. Established ties to monument.

August 8, 1960 - Found concrete monument down 1.0' with an iron pipe on the north side. Updated ties.

June 4, 1964 - Found concrete monument and updated ties.

July 14, 1966 - Found concrete monument missing with a 1/2" iron pipe in its location. Two remaining ties fit location of iron pipe. Updated ties.

August 24, 1967 - Found iron pipe missing. Reset position of corner with a spike using two remaining ties. Updated ties.

August 3, 1970 - Found spike missing. Reset position of corner with a broken off cast iron monument set flush with the surface using ties. Updated ties. Monument is 4'± north of centerline.

July 16, 1974 - Found cast iron monument and updated ties.

June 23, 1977 - Found cast iron monument and updated ties.

July 3, 1980 - Found cast iron monument and updated ties.

June 17, 1986 - Found cast iron monument and updated ties.

January 26, 1988 - Found cast iron monument and updated ties.

August 21, 1990 - Found cast iron monument and updated ties.

August 16, 1994 - Found cast iron monument and updated ties.

March 13, 2000 - Set construction ties and removed cast iron monument prior to road construction.

June 7, 2000 - Set cast iron monument after road construction using construction ties. Updated ties.

August 23, 2001 - Found cast iron monument and established NAD 1983 (1996 Adjustment) Anoka County Project Coordinates by Static GPS methods. Updated ties.

March 10, 2010 - Found cast iron monument and updated ties.

April 29, 2015 - Found cast iron monument 2' north of center line. Verified position by VRS GPS methods. Updated ties.

January 30, 2020 - Found cast iron monument down 0.2'±. Verified position by VRS GPS methods. Updated ties.

July 29, 2022 - Reset marker after CIM not found due to road construction, with a 1.7' - 1/2" capped Iron Pipe, verified position by VRS GPS method and updated ties after reset complete.