

CERTIFICATE OF LOCATION OF GOVERNMENT CORNER

County of Anoka

State of Minnesota

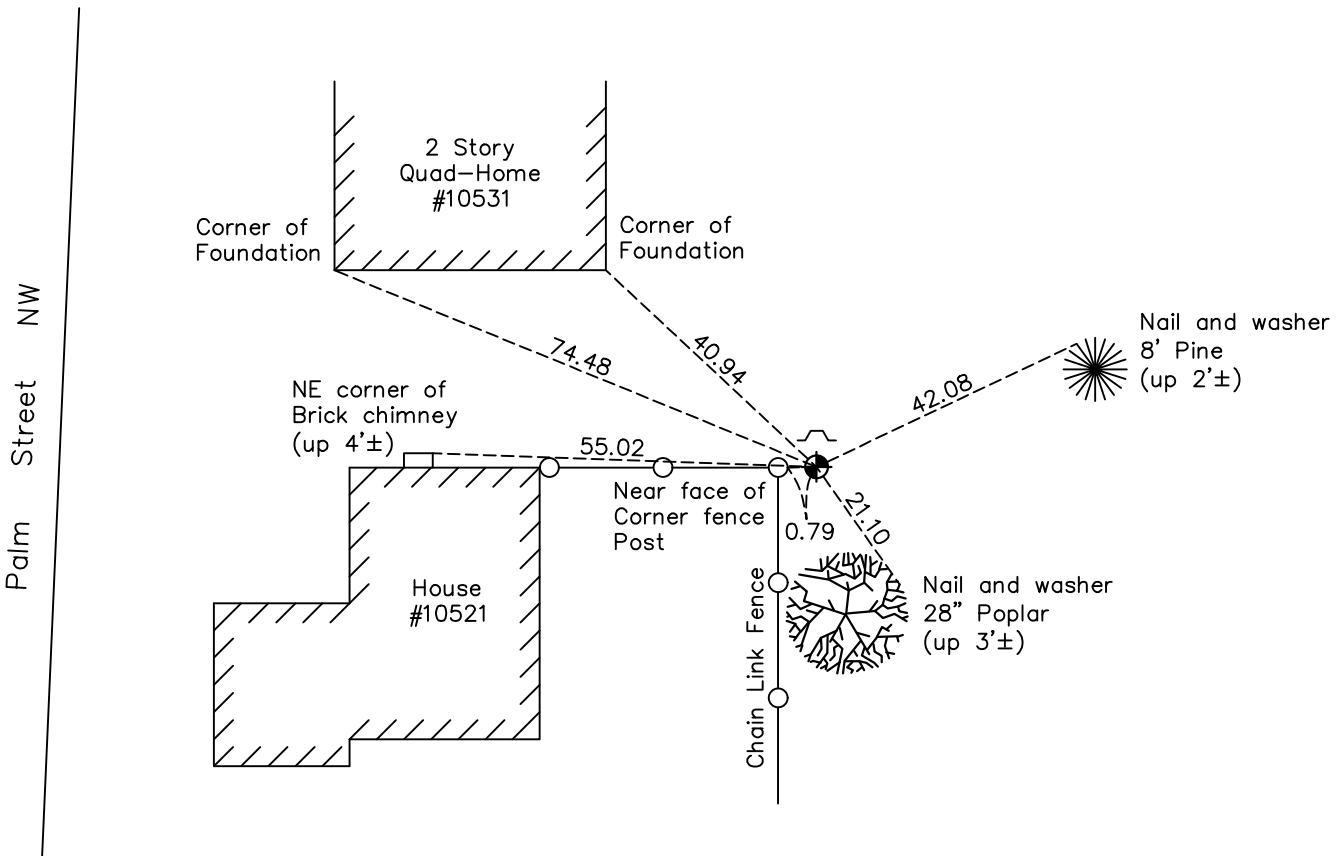
East 1/4 Corner of Sec. 23 Township 31 Range 24

On the 2nd day of August, 1960, the described corner was evidenced by a 1 1/2" iron pipe

and to perpetuate the location of said corner, at the exact location thereof, a permanent marker was placed consisting of a cast iron monument

AND on the 6th day of July, 2022, said permanent marker was found down 0.5'± with a sign and post 1.1'± north and the ties were updated

Updated reference ties are as shown below.



Revision Date
12/16/2022

N.A.D. 1983 Coordinates
 (1996 Adjustment)

County Project Coordinates	
Northing	145688.3905
Easting	494746.8238
Date	8/09/01

I hereby certify that this United States public land survey monument record is correct and complete to the best of my knowledge and belief.

David Zieglmeier Date 2/28/23

David Zieglmeier Anoka County Surveyor
 Minnesota License Number 46179

HISTORY OF GOVERNMENT CORNER

Page No. 76

County of Anoka

State of Minnesota

East 1/4 Corner of Sec. 23 Township 31 Range 24

CORNER HISTORY:

Summer 1957 - Minder Engineering Company found a 1-1/2" iron pipe. Established ties to monument.

August 2, 1960 - Replaced 1-1/2" iron pipe with a cast iron monument set flush with the surface. Updated ties.

June 16, 1964 - Found cast iron monument and updated ties.

July 12, 1966 - Found cast iron monument and updated ties.

July 30, 1970 - Found cast iron monument and updated ties.

July 11, 1974 - Found cast iron monument. Set a warning sign and post 1'± north of monument. Updated ties.

June 23, 1977 - Found cast iron monument and updated ties.

July 8, 1980 - Found cast iron monument and updated ties.

June 24, 1986 - Found an iron pipe in location of cast iron monument after housing construction in area. Replaced iron pipe with a cast iron monument and updated ties. The warning sign was still in place.

August 29, 1990 - Found cast iron monument and updated ties.

August 11, 1994 - Found cast iron monument and updated ties.

August 9, 2001 - Found cast iron monument and established NAD 1983 (1996 Adjustment) Anoka County Project Coordinates by Static GPS methods. Updated ties.

March 2010 - Found cast iron monument down 0.5'± and updated ties.

May 26, 2015 - Found cast iron monument down 0.5'±. Verified position by VRS GPS methods. Updated ties.

March 2, 2020 - Found cast iron monument down 0.5'±. Verified position by VRS GPS methods. Updated ties.

July 6, 2022 - Found cast iron monument down 0.5'±. Verified position by VRS GPS method. Updated ties.