

# CERTIFICATE OF LOCATION OF GOVERNMENT CORNER

County of Anoka

State of Minnesota

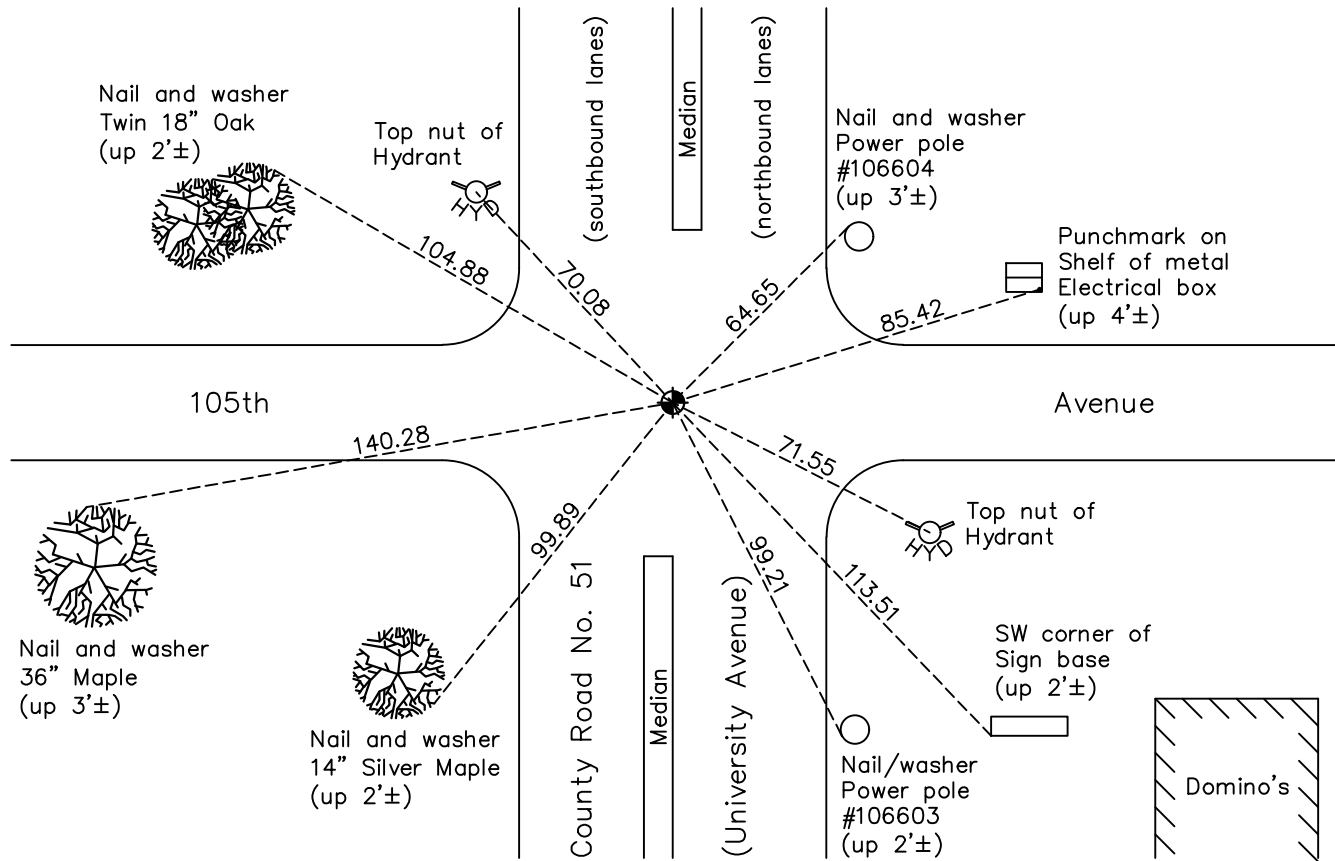
## East 1/4 Corner of Sec. 24 Township 31 Range 24

On the 26th day of June, 1964, the described corner was evidenced by a concrete monument set below a 1" iron pipe

and to perpetuate the location of said corner, at the exact location thereof, a permanent marker was placed consisting of a cast iron monument centered over a concrete monument

AND on the 3rd day of August, 2022, said permanent marker was found flush and the ties were updated

Updated reference ties are as shown below.



Revision Date  
08/03/2022

N.A.D. 1983 Coordinates  
(1996 Adjustment)

County Project Coordinates	
Northing	145767.9104
Easting	500067.4482
Date	6/11/98

I hereby certify that this United States public land survey monument record is correct and complete to the best of my knowledge and belief.

*David Zieglmeier* Date 2/28/23

David Zieglmeier Anoka County Surveyor  
Minnesota License Number 46179

# HISTORY OF GOVERNMENT CORNER

Page No. 77

County of Anoka

State of Minnesota

## East 1/4 Corner of Sec. 24 Township 31 Range 24

### **CORNER HISTORY:**

June 1, 1945 - H.A. Cartwright found concrete monument. Established ties to monument.

September 1954 - Harold Wilke found concrete monument and updated ties.

July 1955 - Minder Engineering Company found concrete monument and updated ties.

Date unknown - Found concrete monument down 3' with an iron pipe centered over the monument and down 2". Replaced iron pipe with a cast iron monument set over the concrete monument. Updated ties.

June 26, 1964 - Found 1" iron pipe down 3" and the concrete monument down 37". Replaced iron pipe with a cast iron monument set flush with the surface over the concrete monument. Also set P.K. nails 2.00' north and east of monument. Updated ties.

July 11, 1966 - Found cast iron monument and updated ties.

July 19, 1967 - Found cast iron monument and updated ties.

July 16, 1974 - Found cast iron monument and updated ties.

June 23, 1977 - Found cast iron monument and updated ties.

July 8, 1980 - Found cast iron monument and updated ties.

February 14, 1992 - Found cast iron monument and updated ties.

September 19, 1994 - Set cast iron monument after road construction and updated ties.

June 11, 1998 - Found cast iron monument and established NAD 1983 (1996 Adjustment) Anoka County Project Coordinates by Static GPS methods.

December 15, 1998 - Found cast iron monument and updated ties.

March 22, 2010 - Found cast iron monument flush with the surface and updated ties.

May 26, 2015 - Found cast iron monument flush with the surface and updated ties.

May 17, 2017 - Set construction ties and removed cast iron monument prior to road construction. Verified location of corner by VRS GPS methods.

October 16, 2017 - Set cast iron monument after road construction using construction ties. Updated ties and verified location of corner by Static and VRS GPS methods.

January 27, 2020 - Found cast iron monument. Verified position by VRS GPS methods. Updated ties.

August 3, 2022 - Found cast iron monument. Verified position by VRS GPS method. Updated ties.