

CERTIFICATE OF LOCATION OF GOVERNMENT CORNER

County of Anoka

State of Minnesota

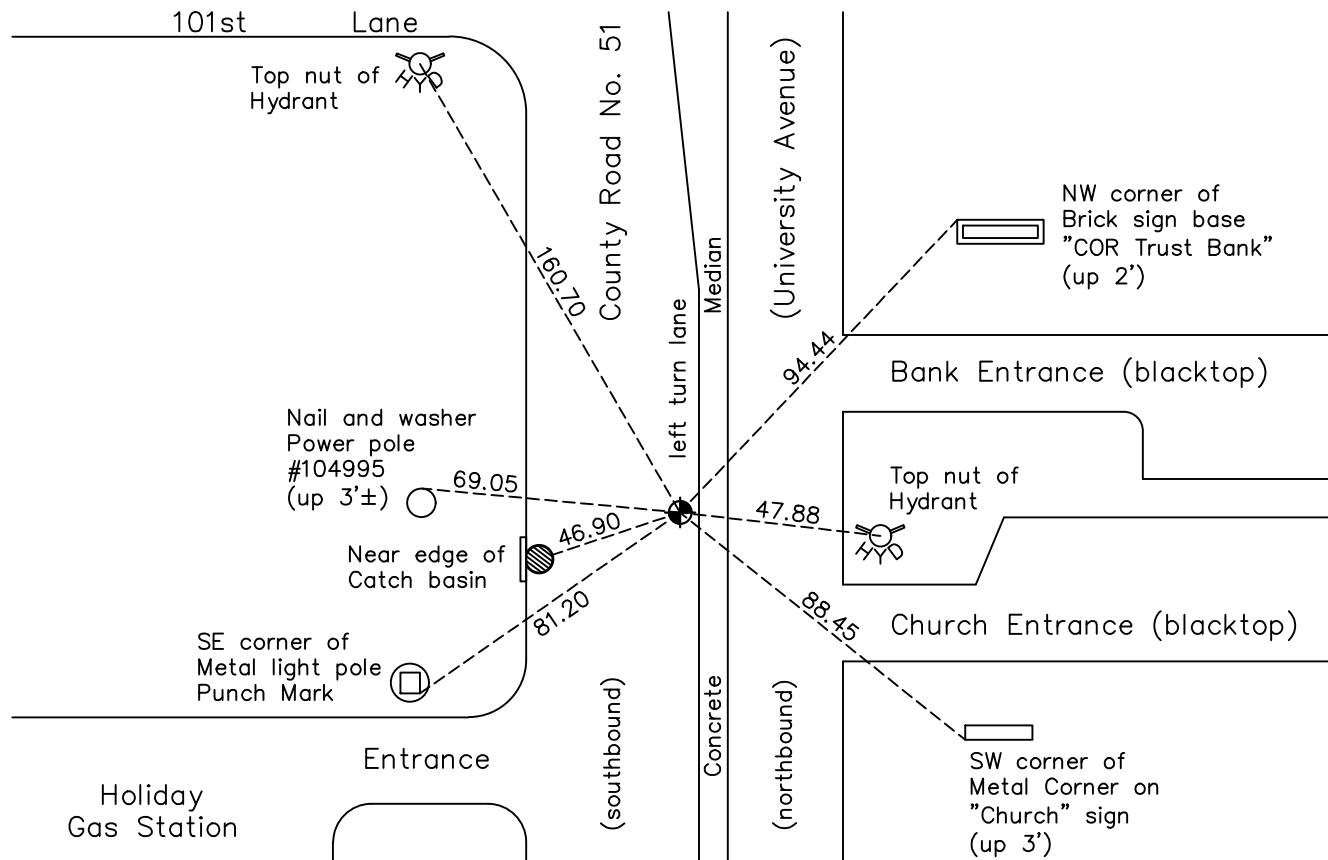
Northeast Corner of Sec. 25 Township 31 Range 24

On the 28th day of August, 1968, the described corner was evidenced by a concrete monument

and to perpetuate the location of said corner, at the exact location thereof, a permanent marker was placed consisting of a cast iron monument

AND on the 8th day of July, 2022, said permanent marker was found flush and the ties were updated

Updated reference ties are as shown below.



Revision Date
 12/16/2022

N.A.D. 1983 Coordinates
 (1996 Adjustment)

County Project Coordinates	
Northing	143127.3404
Easting	500031.6081
Date	12/15/98

I hereby certify that this United States public land survey monument record is correct and complete to the best of my knowledge and belief.
David Zieglmeier Date 2/28/23
 David Zieglmeier Anoka County Surveyor
 Minnesota License Number 46179

HISTORY OF GOVERNMENT CORNER

Page No. 78

County of Anoka

State of Minnesota

Northeast Corner of Sec. 25 Township 31 Range 24

CORNER HISTORY:

June 1, 1945 - H.A. Cartwright found concrete monument set down 0.4'. Established ties to monument.

September 1954 - Harold Wilke found concrete monument and updated ties.

July 1955 - Minder Engineering Company found concrete monument and updated ties.

July 6, 1960 - Found railroad spike north of concrete monument and a pinched iron pipe on top of monument and flush with the surface. Updated ties.

June 26, 1964 - Found concrete monument and updated ties.

July 11, 1966 - Found concrete monument and updated ties.

June 19, 1968 - Found concrete monument and updated ties prior to construction.

August 28, 1968 - Set cast iron monument flush with surface after road construction and updated ties.

July 15, 1974 - Found cast iron monument and updated ties.

June 23, 1977 - Found cast iron monument and updated ties.

July 9, 1980 - Found cast iron monument and updated ties.

September 19, 1994 - Set cast iron monument after road construction and updated ties.

December 15, 1998 - Found cast iron monument and established NAD 1983 (1996 Adjustment) Anoka County Project Coordinates by Static GPS methods. Updated ties.

March 22, 2010 - Found cast iron monument flush with the surface and updated ties.

May 1, 2015- Found cast iron monument flush with the surface and updated ties.

May 17, 2017 - Set construction ties and removed cast iron monument prior to road construction. Verified location of corner by VRS GPS methods.

October 16, 2017 - Set cast iron monument after road construction using construction ties. Updated ties and verified location of corner by Static and VRS GPS methods.

January 27, 2020 - Found cast iron monument flush. Verified position by VRS GPS methods. Updated ties.

July 8, 2022 - Found cast iron monument flush. Verified position by VRS GPS method. Updated ties.