

CERTIFICATE OF LOCATION OF GOVERNMENT CORNER

County of Anoka

State of Minnesota

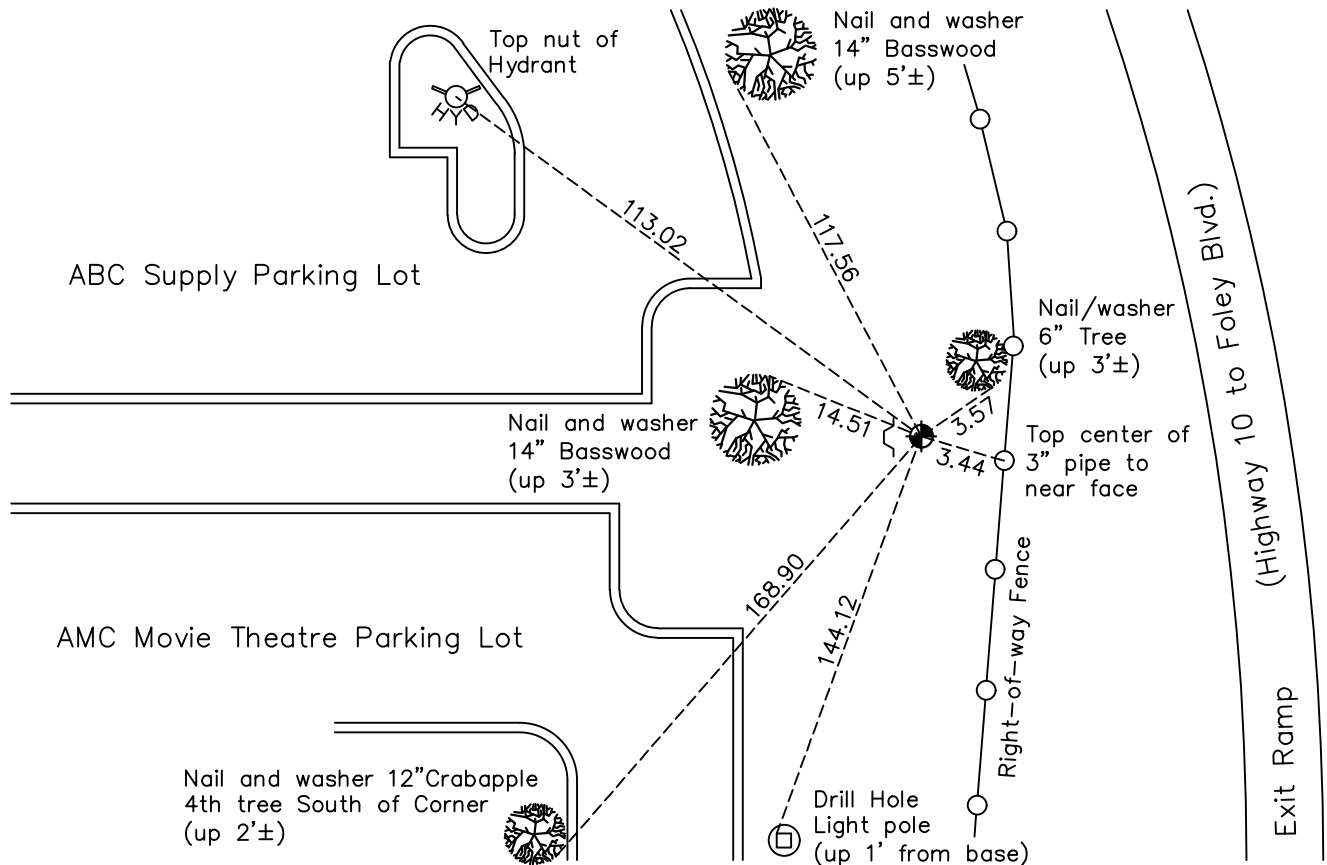
North 1/4 Corner of Sec. 25 Township 31 Range 24

On the 1st day of June, 1962, the described corner was evidenced by a 3/4" iron pipe

and to perpetuate the location of said corner, at the exact location thereof, a permanent marker was placed consisting of a cast iron monument

AND on the 6th day of July, 2022, said permanent marker was found down 0.1'± with a sign and post on the west side and the ties were updated

Updated reference ties are as shown below.



Revision Date
12/16/2022

N.A.D. 1983 Coordinates
(1996 Adjustment)

County Project Coordinates	
Northing	143081.3796
Easting	497362.2590
Date	9/06/01

I hereby certify that this United States public land survey monument record is correct and complete to the best of my knowledge and belief.

David Zieglmeier Date 2/28/23

David Zieglmeier Anoka County Surveyor
Minnesota License Number 46179

HISTORY OF GOVERNMENT CORNER

County of Anoka

State of Minnesota

Page No. 79

History Page 1

North 1/4 Corner of Sec. 25 Township 31 Range 24

CORNER HISTORY:

September 15, 1943 - H.A. Cartwright found concrete monument set down 3". Established ties to monument.

July 1957 - Minder Engineering Company found concrete monument and updated ties.

June 16, 1959 - Found concrete monument and updated ties.

December 11, 1959 - Concrete monument was removed for water main installation. Caswell Engineering Company provided construction ties to the monument.

December 14, 1960 - Set spike after construction using construction ties.

May 28, 1962 - State Highway Department found 3/4" iron pipe.

June 1, 1962 - Replaced 3/4" iron pipe (fits old ties very well) with a cast iron monument. Also set 1" red iron pipe on north side up 15". Updated ties.

April 26, 1965 - Found cast iron monument and updated ties.

November 18, 1965 - Set cast iron monument flush with the surface after construction. Steel fence posts 0.5'± west, NE and SE. Updated ties.

July 12, 1966 - Found cast iron monument and updated ties.

July 31, 1970 - Found cast iron monument and updated ties.

July 16, 1974 - Found cast iron monument and updated ties.

June 23, 1977 - Found cast iron monument and updated ties.

July 8, 1980 - Found cast iron monument and updated ties. Right-of-way sign and post on the west side.

June 13, 1986 - Found cast iron monument and updated ties.

April 26, 1991 - Found cast iron monument and updated ties.

August 24, 1994 - Found cast iron monument and updated ties.

September 18, 1996 - Updated ties and removed cast iron monument prior to construction. Sign and post on west side.

April 11, 1997 - Replaced 1/2" iron pipe, set after construction, with a cast iron monument and updated ties.

September 6, 2001 - Found cast iron monument and established NAD 1983 (1996 Adjustment) Anoka County Project Coordinates by Static GPS methods. Updated ties.

March 11, 2010 - Found cast iron monument and updated ties.

May 11, 2015 - Found cast iron monument and updated ties.

HISTORY OF GOVERNMENT CORNER

County of Anoka

State of Minnesota

Page No. 79

History Page 2

North 1/4 Corner of Sec. 25 Township 31 Range 24

CORNER HISTORY:

January 31, 2020 - Found cast iron monument. Verified position by VRS GPS methods. Updated ties.

July 6, 2022 - Found cast iron monument down 0.1'±. Verified position by VRS GPS method. Updated ties.