

# CERTIFICATE OF LOCATION OF GOVERNMENT CORNER

County of Anoka

State of Minnesota

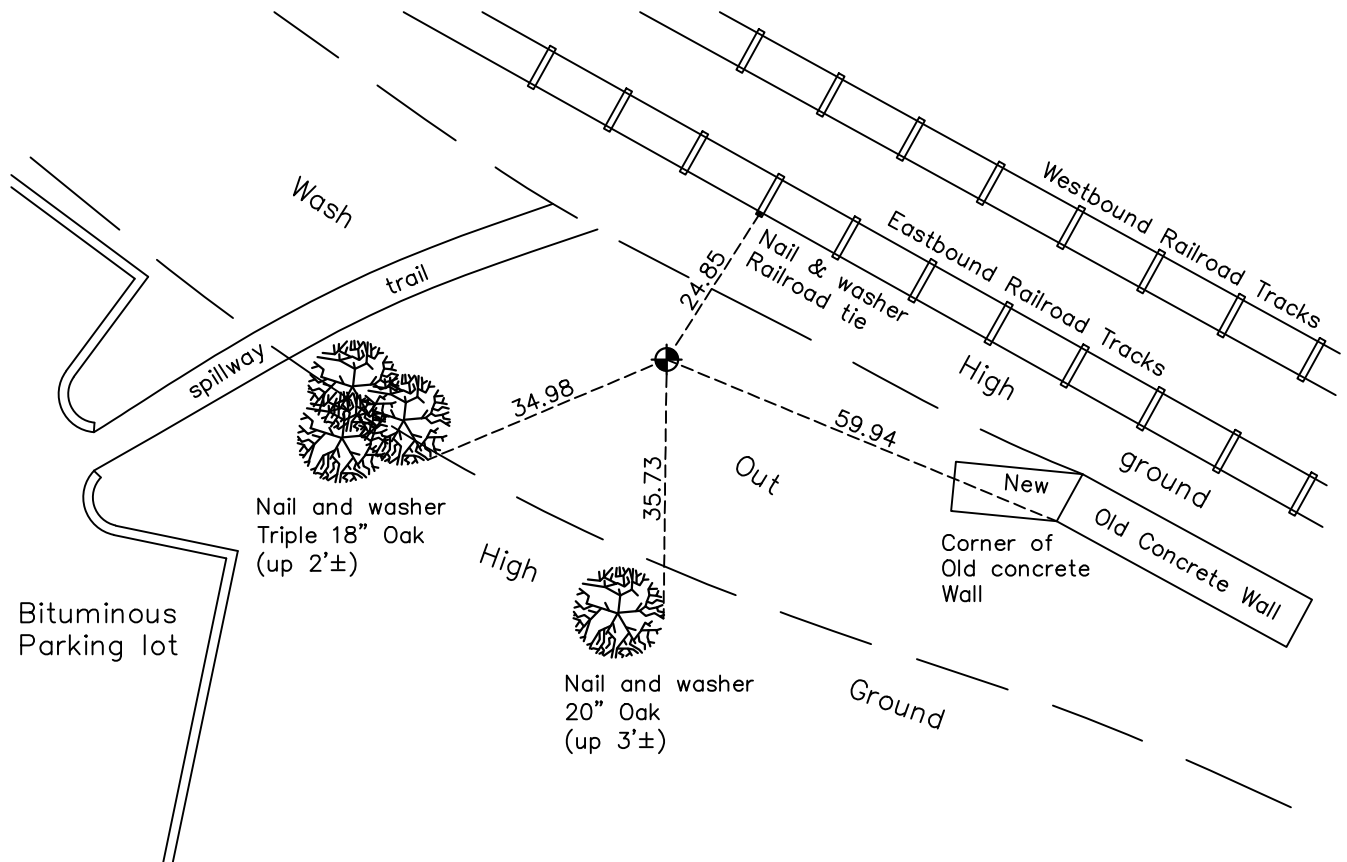
## North 1/4 Corner of Sec. 26 Township 31 Range 24

On the 12th day of July, 1974, the described corner was evidenced by a concrete monument

and to perpetuate the location of said corner, at the exact location thereof, a permanent marker was placed consisting of a cast iron monument

AND on the 8th day of July, 2022, said permanent marker was found down 1.5'± and the ties were updated

Updated reference ties are as shown below.



Revision Date  
 12/16/2022

N.A.D. 1983 Coordinates  
 (1996 Adjustment)

County Project Coordinates	
Northing	143077.5035
Easting	492056.1932
Date	10/23/01

I hereby certify that this United States public land survey monument record is correct and complete to the best of my knowledge and belief.

*David Zieglmeier* Date 2/28/23

David Zieglmeier Anoka County Surveyor  
 Minnesota License Number 46179

# HISTORY OF GOVERNMENT CORNER

Page No. 81

County of Anoka

State of Minnesota

## North 1/4 Corner of Sec. 26 Township 31 Range 24

### **CORNER HISTORY:**

November 11, 1944 - H.A. Cartwright found concrete monument set flush with the surface. Established ties to monument.

July 1957 - Minder Engineering Company found concrete monument and updated ties.

February 23, 1960 - Found concrete monument and updated ties.

June 3, 1964 - Found concrete monument down 2" and updated ties.

July 15, 1966 - Found concrete monument and updated ties.

August 3, 1970 - Found concrete monument and updated ties.

July 12, 1974 - Replaced concrete monument with a cast iron monument set down 0.5'±. Updated ties.

June 23, 1977 - Found cast iron monument and updated ties.

July 1, 1980 - Found cast iron monument and updated ties.

August 24, 1994 - Found cast iron monument and updated ties.

September 24, 2001 - Found cast iron monument and updated ties.

October 23, 2001 - Found cast iron monument and established NAD 1983 (1996 Adjustment) Anoka County Project Coordinates by Static GPS methods.

March 15, 2010 - Found cast iron monument down 1.5'± and updated ties.

May 8, 2015 - Found cast iron monument down 1.5'± and updated ties.

March 5, 2020 - Found cast iron monument down 1.5'±. Verified position by VRS GPS methods. Updated ties.

July 8, 2022 - Found cast iron monument down 1.5'±. Verified position by VRS GPS method. Updated ties.