

CERTIFICATE OF LOCATION OF GOVERNMENT CORNER

County of Anoka

State of Minnesota

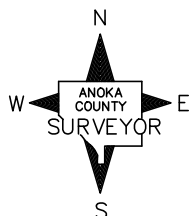
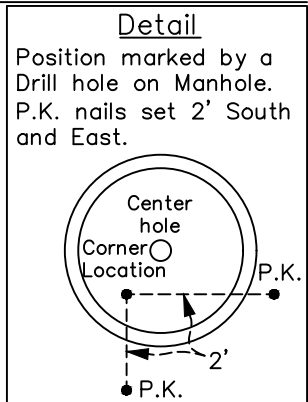
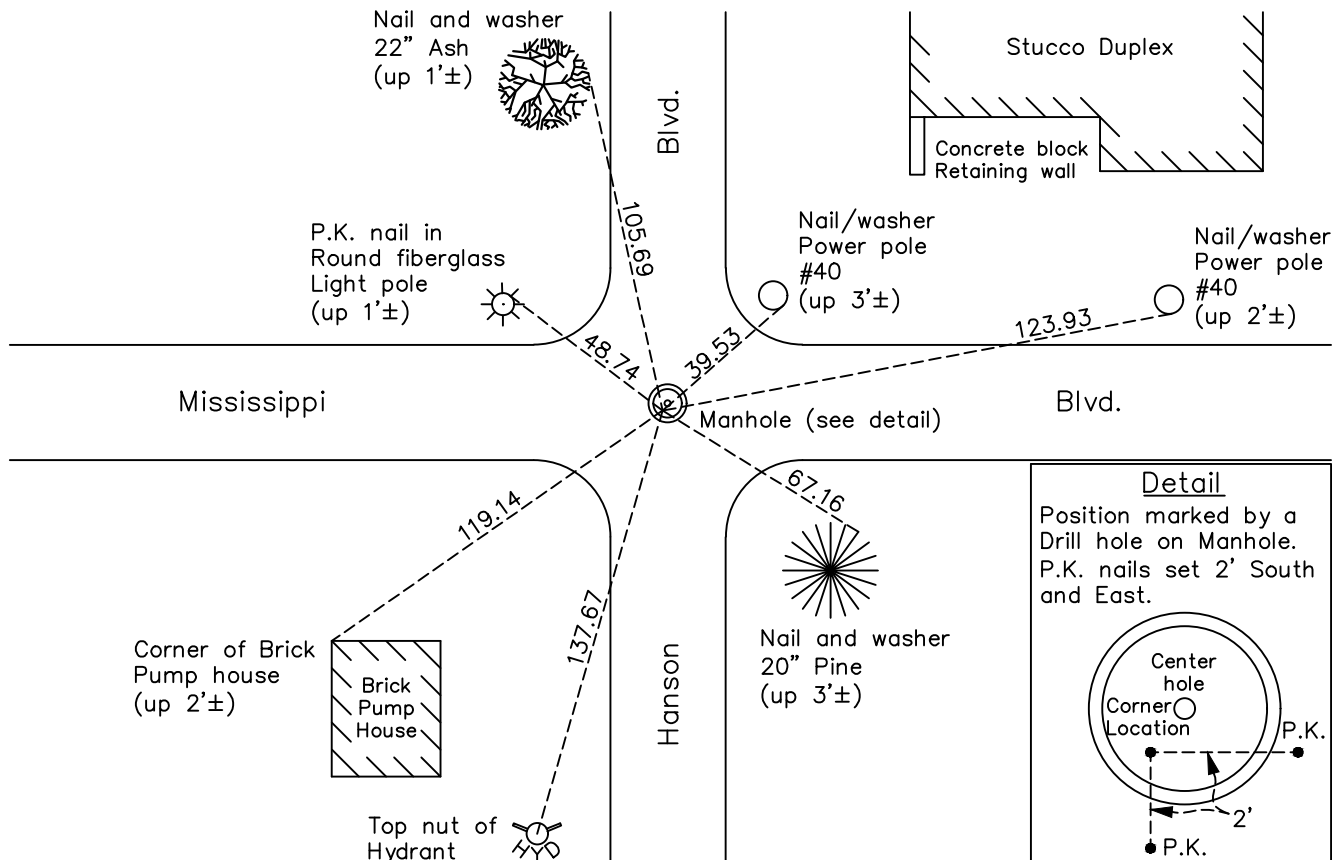
South 1/4 Corner of Sec. 22 Township 31 Range 24

On the 10th day of October, 1997, the described corner was evidenced by a 3/8" hole in manhole cover

and to perpetuate the location of said corner, at the exact location thereof, a permanent marker was placed consisting of a position on a manhole cover

AND on the 8th day of July, 2022, said permanent marker was found Manhole cover w/ 2' PK offsets to South & East, ties updated

Updated reference ties are as shown below.



Revision Date
 12/19/22

N.A.D. 1983 Coordinates
 (1996 Adjustment)

County Project Coordinates	
Northing	143186.1974
Easting	486730.1055
Date	8/23/01

I hereby certify that this United States public land survey monument record is correct and complete to the best of my knowledge and belief.

David Zieglmeier Date 2/28/23

David Zieglmeier Anoka County Surveyor
 Minnesota License Number 46179

HISTORY OF GOVERNMENT CORNER

Page No. 83

County of Anoka

State of Minnesota

South 1/4 Corner of Sec. 22 Township 31 Range 24

CORNER HISTORY:

November 7, 1944 - H.A. Cartwright found concrete monument. Established ties to monument.

July 26, 1960 - Found iron pipe flush with the surface over the center of concrete monument down 12" with an iron pipe on north side flush with monument. Updated ties.

June 4, 1964 - Found iron pipe and concrete monument. Updated ties.

August 21, 1967 - Found iron pipe and concrete monument. Updated ties.

July 31, 1970 - Corner located at 3/8" hole drilled in manhole cover with P.K. nails set 2.00' north and west.

July 16, 1974 - Found location of corner on manhole cover and updated ties.

July 3, 1980 - Found location of corner on manhole cover and updated ties.

June 17, 1986 - Found location of corner on manhole cover and updated ties.

August 15, 1994 - Found location of corner on manhole cover and updated ties.

September 10, 1997 - Set construction ties prior to road construction.

October 10, 1997 - Reset position of corner on manhole cover after construction and set P.K. nails south and west. Updated ties.

August 23, 2001 - Reset position of corner on manhole cover and established NAD 1983 (1996 Adjustment) Anoka County Project Coordinates by Static GPS methods. Updated ties.

January 31, 2011 - Reset position of corner on manhole cover and updated ties.

May 8, 2015 - Found corner location on manhole cover. Verified position by VRS GPS methods. Updated ties.

April 21, 2020 - Reset corner location on manhole using static GPS methods. Set P.K. nails 2' South and 2' East of corner location. Updated corner ties.

July 8, 2022 - Found corner location on manhole cover. Verified position by VRS GPS methods. Updated ties.