

CERTIFICATE OF LOCATION OF GOVERNMENT CORNER

County of Anoka

State of Minnesota

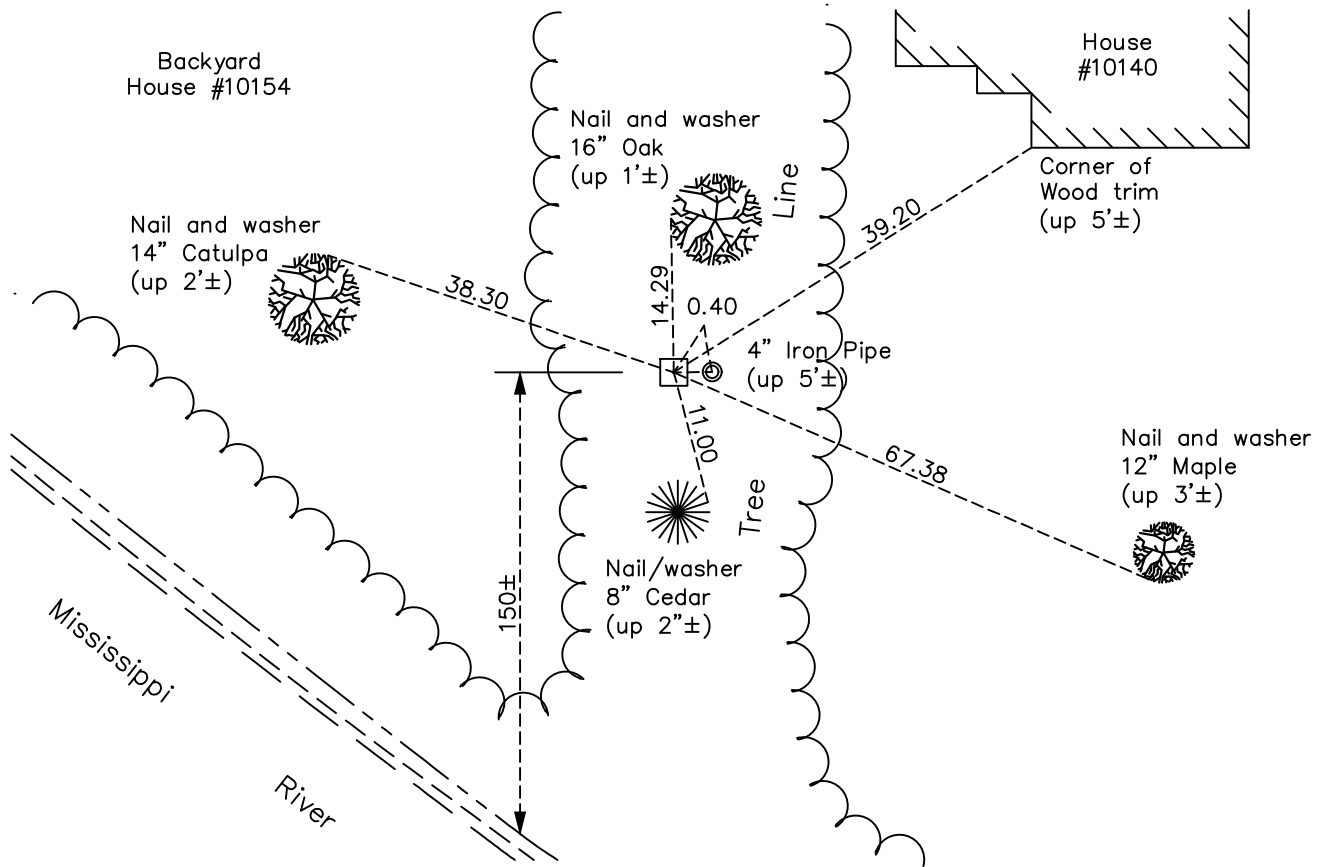
Southwest Corner of Sec. 22 Township 31 Range 24

On the 18th day of November, 1944, the described corner was evidenced by a concrete monument

and to perpetuate the location of said corner, at the exact location thereof, a permanent marker was placed consisting of the same concrete monument

AND on the 27th day of July, 2022, said permanent marker was found down 0.2'± and the ties were updated (appears leaning slightly E'ly)

Updated reference ties are as shown below.



Revision Date
12/19/22

N.A.D. 1983 Coordinates
(1996 Adjustment)

County Project Coordinates	
Northing	<u>143288.6265</u>
Easting	<u>484052.9361</u>
Date	<u>11/01/01</u>

I hereby certify that this United States public land survey monument record is correct and complete to the best of my knowledge and belief.

David Zieglmeier Date 2/28/23

David Zieglmeier Anoka County Surveyor
Minnesota License Number 46179

HISTORY OF GOVERNMENT CORNER

Page No. 84

County of Anoka

State of Minnesota

Southwest Corner of Sec. 22 Township 31 Range 24

CORNER HISTORY:

November 18, 1944 - H.A. Cartwright found concrete monument set flush with the surface. Established ties to monument.

March 17, 1954 - N.C. Hoiium found concrete monument with a 2 1/2" iron pipe 0.4' east of monument and updated ties.

July 26, 1960 - Found concrete monument with a 2 1/2" iron pipe 0.4' east of monument and up 4'. Updated ties.

June 4, 1964 - Found concrete monument with a 2 1/2" iron pipe 0.4' east of monument and updated ties.

July 14, 1966 - Found concrete monument with a 2 1/2" iron pipe 0.4' east of monument and updated ties.

August 3, 1970 - Found concrete monument with a 2 1/2" iron pipe 0.4' east of monument and up 5'±. Updated ties.

June 23, 1977 - Found concrete monument with a 2 1/2" iron pipe 0.4' east of monument and up 5'±. Updated ties.

August 30, 1990 - Found concrete monument and updated ties.

November 1, 2001 - Found concrete monument with a 2 1/2" iron pipe 0.4' east of monument and established NAD 1983 (1996 Adjustment) Anoka County Project Coordinates by Static GPS methods. Updated ties.

March 9, 2010 - Found concrete monument and updated ties.

June 12, 2015 - Found concrete monument down 0.3'± and updated ties.

January 30, 2020 - Found concrete monument down 0.3'± and updated ties.

July 27, 2022 - Found concrete monument down 0.2'± and updated ties.