

# CERTIFICATE OF LOCATION OF GOVERNMENT CORNER

County of Anoka

State of Minnesota

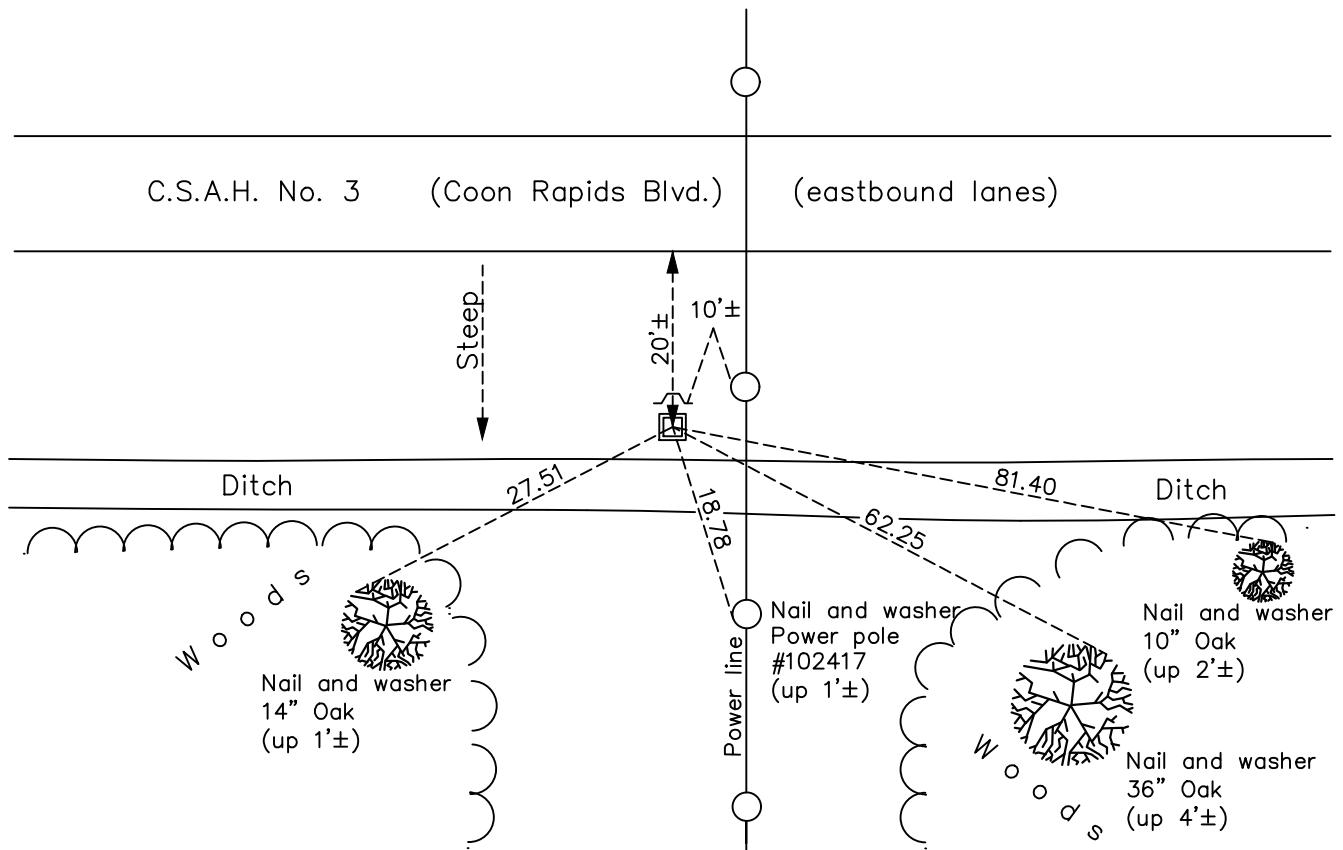
## East 1/4 Corner of Sec. 26 Township 31 Range 24

On the 14th day of February, 2011, the described corner was evidenced by a red and white iron pipe

and to perpetuate the location of said corner, at the exact location thereof, a permanent marker was placed consisting of a 4' section of 2" sq steel Telspar with a 'County Surveyor' cap up 3'± added over a broken off red & white iron pipe

AND on the 6th day of July, 2022, said permanent marker was found up 1.7'± and the ties were updated

Updated reference ties are as shown below.



Revision Date  
12/20/2022

N.A.D. 1983 Coordinates  
(1996 Adjustment)

County Project Coordinates	
Northing	<u>140398.7603</u>
Easting	<u>494703.4548</u>
Date	<u>10/23/01</u>

I hereby certify that this United States public land survey monument record is correct and complete to the best of my knowledge and belief.

*David Zieglmeier* Date 2/28/23

David Zieglmeier Anoka County Surveyor  
Minnesota License Number 46179

# HISTORY OF GOVERNMENT CORNER

Page No. 87

County of Anoka

State of Minnesota

## East 1/4 Corner of Sec. 26 Township 31 Range 24

### **CORNER HISTORY:**

July 19, 1943 - H.A. Cartwright found concrete monument set flush with the surface. Established ties to monument.

August 8, 1960 - Found concrete monument with a 3" iron post up 6.5' on north side and updated ties.

June 17, 1964 - Found concrete monument and updated ties.

July 11, 1966 - Found concrete monument and updated ties.

August 4, 1970 - Found concrete monument and updated ties.

July 1971 - Found area under construction and updated ties to corner position. Type of monument found was not recorded.

July 16, 1974 - Found red and white iron pipe up 4'± with a sign and updated ties.

June 24, 1977 - Found red and white iron pipe and updated ties.

July 7, 1980 - Found red and white iron pipe and updated ties.

June 18, 1986 - Found red and white iron pipe and updated ties.

April 25, 1988 - Found red and white iron pipe and updated ties.

August 29, 1990 - Found red and white iron pipe with a sign and post and updated ties.

August 15, 1994 - Found red and white iron pipe and updated ties.

October 23, 2001 - Found red and white iron pipe and established NAD 1983 (1996 Adjustment) Anoka County Project Coordinates by Static GPS methods. Updated ties.

February 14, 2011 - Found red and white iron pipe broken off. A 4' section of 2" square steel Telspar with a 'County Surveyor' cap was added to the remainder of the existing monument. Updated ties.

June 1, 2015 - Found 2" square steel Telspar with a 'County Surveyor' cap and updated ties.

September 16, 2021 - Found 2" square steel Telspar with a 'County Surveyor' cap and updated ties.

July 6, 2022 - Found 2" square steel Telspar with a 'County Surveyor' cap up 1.7'±, verified position by VRS GPS method and updated ties.