

# CERTIFICATE OF LOCATION OF GOVERNMENT CORNER

County of Anoka

State of Minnesota

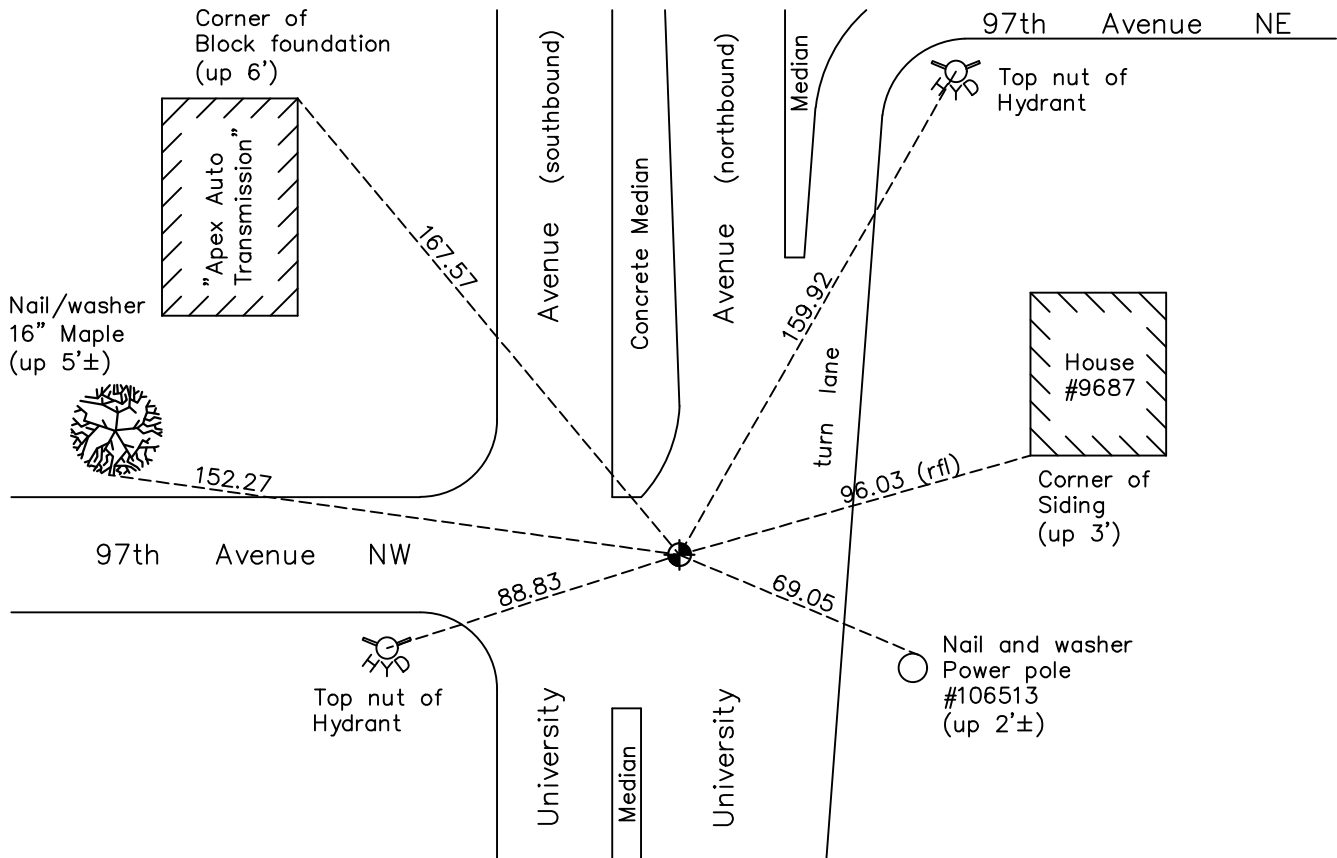
## East 1/4 Corner of Sec. 25 Township 31 Range 24

On the 28th day of August, 1968, the described corner was evidenced by a concrete monument

and to perpetuate the location of said corner, at the exact location thereof, a permanent marker was placed consisting of a cast iron monument

AND on the 8th day of July, 2022, said permanent marker was found flush and the ties were updated

Updated reference ties are as shown below.



Revision Date  
 12/20/2022

N.A.D. 1983 Coordinates  
 (1996 Adjustment)

County Project Coordinates	
Northing	140478.2190
Easting	500001.9968
Date	12/15/98

I hereby certify that this United States public land survey monument record is correct and complete to the best of my knowledge and belief.  
*David Zieglmeier* Date 2/28/23  
 David Zieglmeier Anoka County Surveyor  
 Minnesota License Number 46179

# HISTORY OF GOVERNMENT CORNER

Page No. 88

County of Anoka

State of Minnesota

## East 1/4 Corner of Sec. 25 Township 31 Range 24

### **CORNER HISTORY:**

Date unknown - Found concrete monument set down 14". Established ties to monument.

September 1954 - Harold Wilke found concrete monument and updated ties.

August 5, 1960 - Found concrete monument down 0.8' with an iron pipe on north side and updated ties.

June 3, 1964 - Found concrete monument and updated ties.

July 11, 1966 - Found concrete monument and updated ties.

June 19, 1968 - Found concrete monument and added additional ties for construction.

August 28, 1968 - Replaced broken off concrete monument with a cast iron monument set flush with the surface and updated ties.

July 19, 1974 - Found cast iron monument and updated ties.

June 24, 1977 - Found cast iron monument and updated ties.

July 9, 1980 - Found cast iron monument and updated ties.

February 14, 1992 - Found cast iron monument and updated ties.

September 19, 1994 - Reset cast iron monument and updated ties.

December 15, 1998 - Found cast iron monument and established NAD 1983 (1996 Adjustment) Anoka County Project Coordinates by Static GPS methods. Updated ties.

March 30, 2010 - Found cast iron monument and updated ties.

May 1, 2015 - Found cast iron monument and updated ties.

May 17, 2017 - Set construction ties and removed cast iron monument prior to road construction. Verified location of corner by VRS GPS methods.

October 16, 2017 - Set cast iron monument after road construction using construction ties. Updated ties and verified location of corner by Static and VRS GPS methods.

January 27, 2020 - Found cast iron monument. Verified position by VRS GPS methods. Updated ties.

July 8, 2022 - Found cast iron monument flush, Verified position by VRS GPS method and Updated ties.