

CERTIFICATE OF LOCATION OF GOVERNMENT CORNER

County of Anoka

State of Minnesota

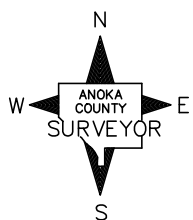
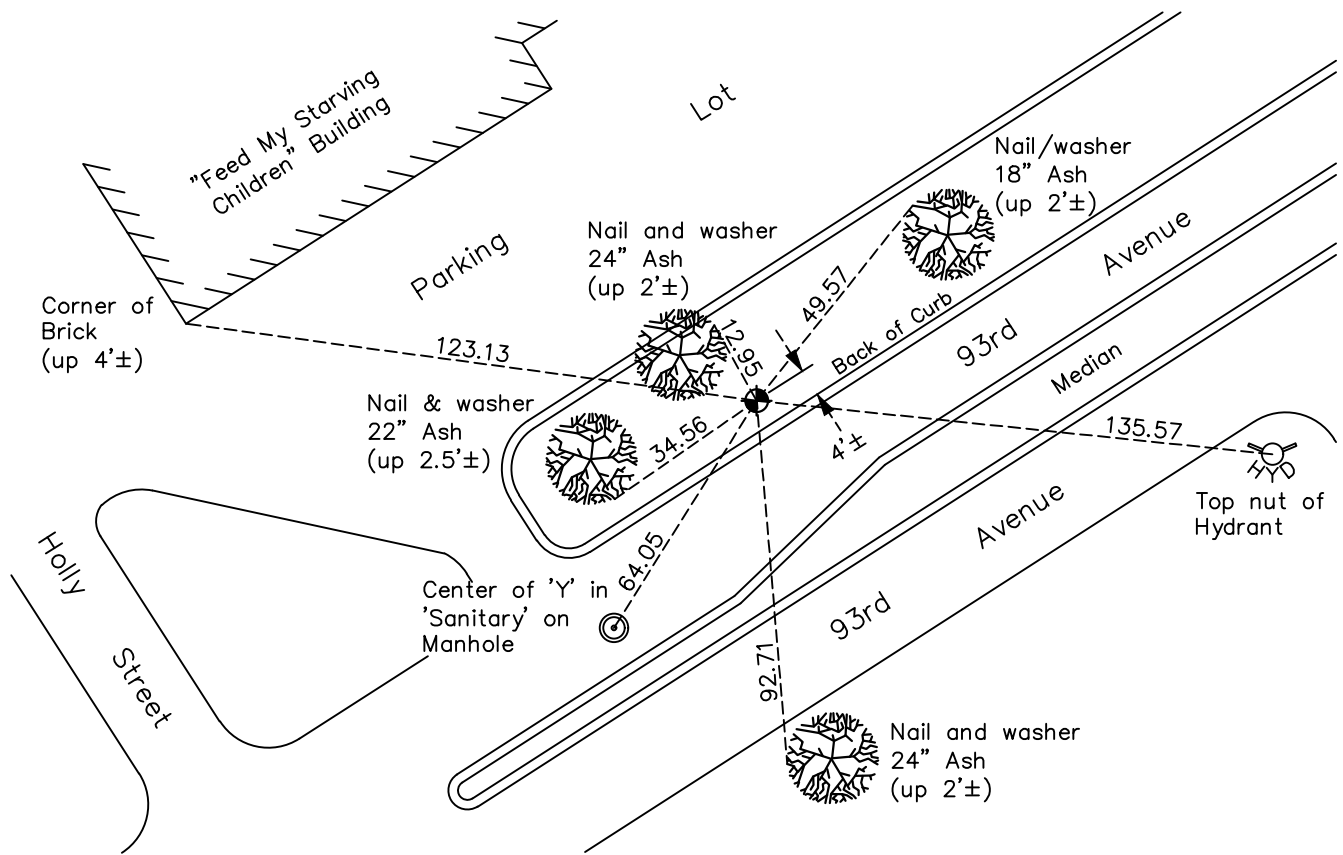
South 1/4 Corner of Sec. 25 Township 31 Range 24

On the 4th day of December, 1964, the described corner was evidenced by a concrete monument

and to perpetuate the location of said corner, at the exact location thereof, a permanent marker was placed consisting of a cast iron monument

AND on the 7th day of July, 2022, said permanent marker was found 4'± Northwest from back of curb and down 0.3'±. The ties were updated

Updated reference ties are as shown below.



Revision Date
12/20/2022

N.A.D. 1983 Coordinates
(1996 Adjustment)

County Project Coordinates	
Northing	<u>137791.0168</u>
Easting	<u>497296.8235</u>
Date	<u>9/14/01</u>

I hereby certify that this United States public land survey monument record is correct and complete to the best of my knowledge and belief.

David Zieglmeier Date 2/28/23

David Zieglmeier Anoka County Surveyor
Minnesota License Number 46179

HISTORY OF GOVERNMENT CORNER

Page No. 90

County of Anoka

State of Minnesota

South 1/4 Corner of Sec. 25 Township 31 Range 24

CORNER HISTORY:

November 27, 1944 - H.A. Cartwright found concrete monument set flush with the surface. Established ties to monument.

August 11, 1960 - Found concrete monument up 0.3' w/iron pipe up 1.5' on east and west side. Updated ties.

December 4, 1964 - Found concrete monument leaning over. Straightened it to determine position and replaced it with a cast iron monument set up 0.1'. Set steel fence posts 0.5' east and west of monument. Updated ties.

July 12, 1966 - Found cast iron monument and updated ties.

August 5, 1970 - Lowered cast iron monument down 1.0'± and set construction ties prior to road construction.

September 5, 1972 - Found cast iron monument down 1.4'± fitting construction ties. Set sign and post 0.5'± NW of monument and updated ties.

July 18, 1974 - Found cast iron monument and updated ties.

June 24, 1977 - Found cast iron monument and updated ties.

June 30, 1980 - Found cast iron monument down 1.3' and updated ties.

June 13, 1986 - Found cast iron monument and updated ties.

February 1, 1988 - Found cast iron monument and updated ties.

August 16, 1990 - Found cast iron monument and updated ties.

August 15, 1994 - Found cast iron monument and updated ties.

September 14, 2001 - Found cast iron monument and established NAD 1983 (1996 Adjustment) Anoka County Project Coordinates by Static GPS methods.

March 17, 2010 - Found cast iron monument down 0.1' and updated ties.

May, 2015 - Found cast iron monument 4'± northwest from the back of curb. Verified position by VRS GPS methods. Updated ties.

February 11, 2020 - Found cast iron monument 4'± northwest from the back of curb and down 0.3'±. Verified position by VRS GPS methods. Updated ties.

July 7, 2022 - Found cast iron monument down 0.3'±, verified position by VRS GPS method and updated ties.